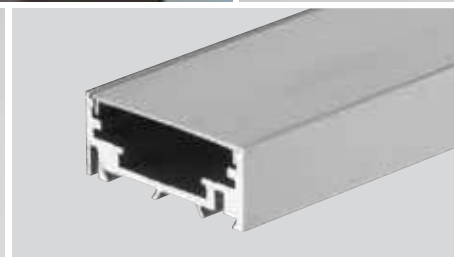


# P-085

€►D.240 → €►D.250

## MY METALGLAS



### P-085

- Profilo stipite in alluminio anodizzato naturale lavorato a misura cliente. Tagliato a 45°
- Door frame complete in anodised aluminium. Corners cut 45° available in the requested sizes.
- Anschlagtürzarge komplett aus eloxiertem Aluminium, erhältlich in den gewünschten Maßen mit Schnitt 45°

### P-086-FIX

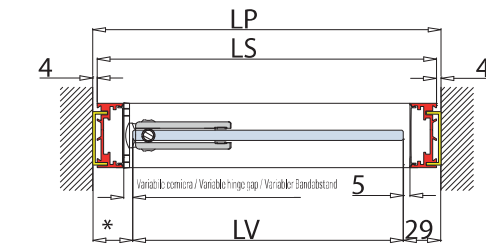
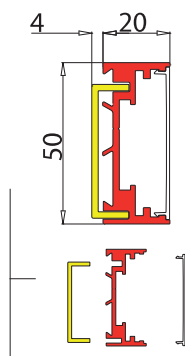
- Profilo stipite in alluminio anodizzato naturale fornito in barre, escluse guarnizioni VP-015
- Aluminium door jamb profile natural anodised without gaskets VP-015, supplied in bars
- Aluminiumprofil Türzarge natur-eloxiert in Stangen, ohne Dichtungen VP-015

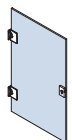
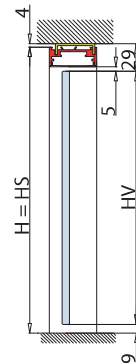
### P-083-CF2

- Squdrette per stipite P-085, P-086
- Connectors for profile P-085, P-086
- Verbinder für Profile P-085, P-086

### P-033

- Profilo optional per regolazione P-080, P-081
- Optional wall profile for adjustment P-080, P-081
- Wandprofil für Verstellung P-080, P-081


 Con/With/Mit **P-033**
 $HS = H - 4$   
 $LS = LP - 8$ 

 Senza/Without/Ohne **P-033**
 $HS = H$   
 $LS = LP$ 

 Con/With/Mit **P-033**

### V-508

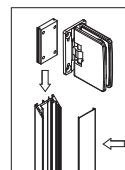
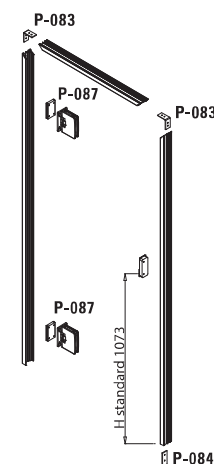
 $LV = LP - (31*+29)$   
 $HV = H - 38$ 

 Senza/Without/Ohne **P-033**

### V-508

 $LV = LP - (27*+25)$   
 $HV = H - 34$ 

## ESEMPIO MONTAGGIO / ASSEMBLY / MONTAGE



### P-087

- Piastrina ad infilare nello stipite per cerniere verticali V-508. Regolabile in altezza e in profondità per i vari spessori di vetro, cerniere non incluse.
- Fixing plate for hinges V-508 in height and depth, adjustable for different glass thickness. Hinges not included.
- Befestigungsplatte für Bänder V-508. Frei höhen und Tiefenverstellbar für verschiedene Glasstärken Bänder nicht enthalten