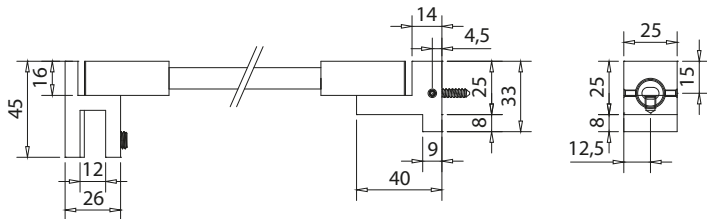


## BARRE DI SUPPORTO QUADRE SNODATE SQUARE SQUARE SUPPORT BARS / ECKIGE STABILISATIONSTANGEN



### B-328

- Barra di supporto snodata Square riducibile a piacere muro/vetro.
- Square adjustable support bar wall/glass, it is possible to cut the bar to adjust its size.
- Eckige Stabilisationsstange Wand/Glas, beliebig Kürzbar.



ART.	Lunghezza (A) Length (A) Länge (A)	Finitura Finish Oberflächen
<b>B-328-500</b>	500 mm	CR NS NO
<b>B-328-1000</b>	1000 mm	CR NS NO OR
<b>B-328-1500</b>	1500 mm	IL NO OR



### B-328-F

- Barra di supporto snodata a muro con attacco fisso a vetro B-324.
- Square support bar with adjustable wall connector and fixed glass connector B-324.
- Eckige Stabilisationsstange Wandanschluss vestellbar, Glasanschluss fest B-324.

ART.	Lunghezza (A) Length (A) Länge (A)	Finitura Finish Oberflächen
<b>B-328-F-500</b>	500 mm	CR NS NO
<b>B-328-F-1000</b>	1000 mm	CR NS NO
<b>B-328-F-1500</b>	1500 mm	IL NO

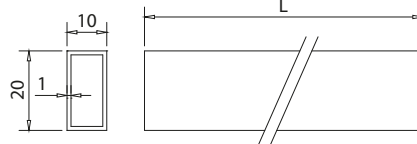
C-272-A

## COMPONENTI / COMPONENTS / EINZELTEILE



### B-318

- Barra centrale Square riducibile a piacere.
- Square centre bar possible to cut to adjust its size.
- Eckige Stange beliebig Kürzbar.



ART.	Lunghezza (A) Length (A) Länge (A)	Finitura Finish Oberflächen
<b>B-318-500</b>	500 mm	CR NS NO
<b>B-318-1000</b>	1000 mm	CR NS NO OR
<b>B-318-1500</b>	1500 mm	IL NO OR

**CR**  
Cromo lucido  
Polished chrome  
Chrom glänzend

**NS**  
Nickel satinato  
Satin nickel  
Ähnlich Edelstahl matt

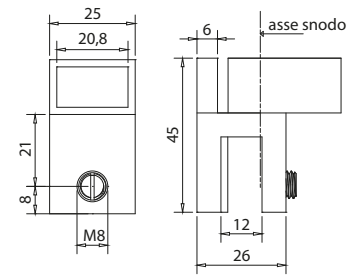
**IL**  
Acciaio inox lucido  
Polished stainless steel  
Edelstahl poliert

**NO**  
Nero opaco  
Matt black  
Schwarz matt

**OR**  
Oro opaco  
Matt gold  
Gold matt


**B-320**

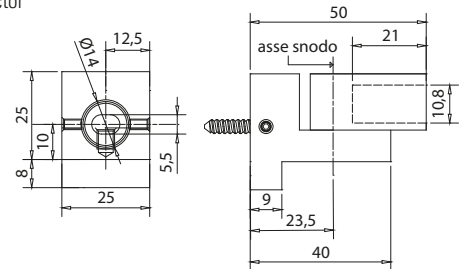
- Attacco a vetro snodato per barra di supporto quadra.
  - Adjustable glass connector for square support bar.
  - Eckige Stabilisationsstange Glasanschluss verstellbar.
- CR - NS - NO - OR



C-272-C


**B-319**

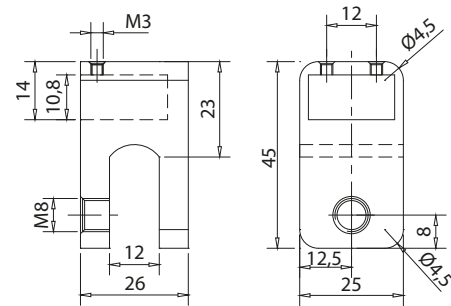
- Attacco a muro snodato per barra di supporto quadra.
  - Adjustable wall connector for square support bar.
  - Eckige Stabilisationsstange Wandanschluss verstellbar.
- CR - NS - NO - OR



C-272-B


**B-324**

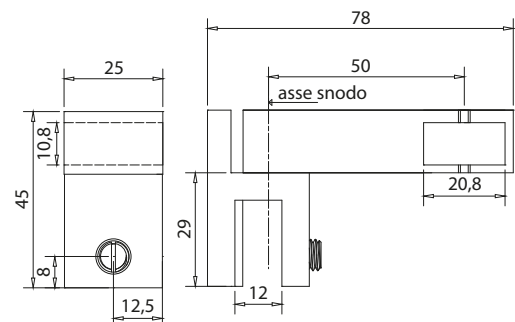
- Attacco a vetro chiuso.
  - Glass connector for square support bar.
  - Eckige Stabilisationsstange Glasanschluss.
- CR - NS - NO



C-272-D


**B-325**

- Supporto centrale snodato per vetro fisso laterale.
  - Adjustable T-connector side glass to support bar.
  - Verstellbares T-Stück für Glas/Stange.
- CR - NS - NO - OR



C-272-F

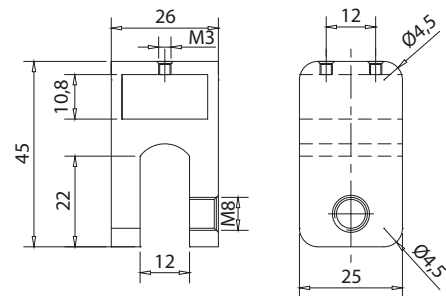
**CR**  
 Cromo lucido  
 Polished chrome  
 Chrom glänzend

**NS**  
 Nickel satinato  
 Satin nickel  
 Ähnlich Edelstahl matt



**B-322**

- Attacco a vetro in linea passante.
  - Glass connector in-line for passage support bar.
  - Glasanschluss in Linie für Stabilisationsstange durchgehend.
- CR - NS

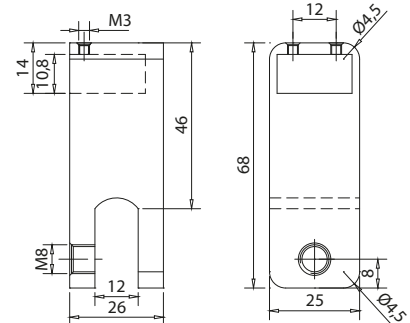


C-272-E



**B-323**

- Attacco a vetro chiuso per barra di supporto quadra.
  - Glass connector for square support bar.
  - Eckige Stabilisationsstange Glasanschluss.
- CR - NS

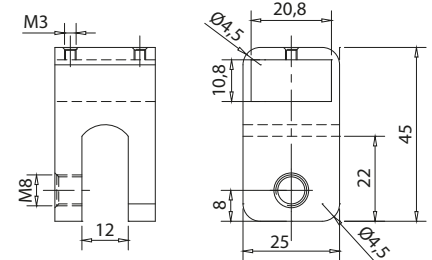


C-272-D



**B-321**

- Attacco a vetro 90° passante.
  - Glass connector 90° for passage support bar.
  - Glasanschluss 90° für Stabilisationsstange durchgehend.
- CR - NS

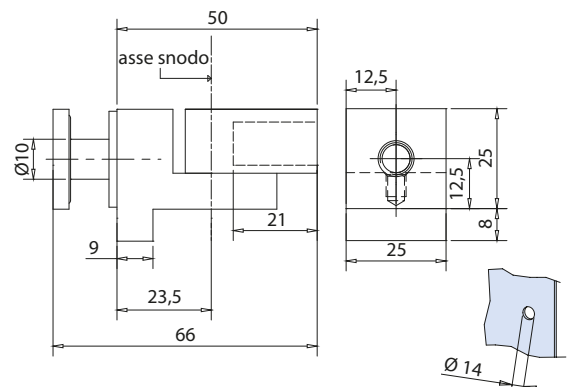


C-272-D



**B-326**

- Attacco snodato montaggio a vetro.
  - Adjustable connector for glass installation.
  - Verstellbarer Anschluss für Glasmontage.
- CR - NS



C-272-G

SEPARÉ

**CR**  
Cromo lucido  
Polished chrome  
Chrom glänzend  
188

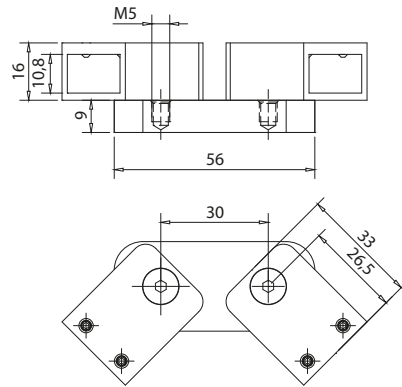
**NS**  
Nickel satinato  
Satin nickel  
Ähnlich Edelstahl matt

**NO**  
Nero opaco  
Matt black  
Schwarz matt

**OR**  
Oro opaco  
Matt gold  
Gold matt


**B-327**

- Attacco snodato doppio.
  - 2-Ways adjustable connector.
  - Verstellbarer Anschluss 2-Wege
- CR - NS



C-272-H



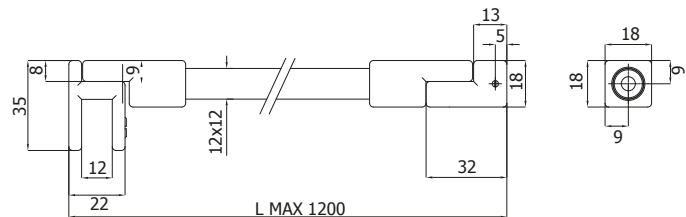
## BARRE DI SUPPORTO QUADRE $\nabla$ 12

### SQUARE $\nabla$ 12 SUPPORT BARS / ECKIGE STABILISATIONSSTANGEN



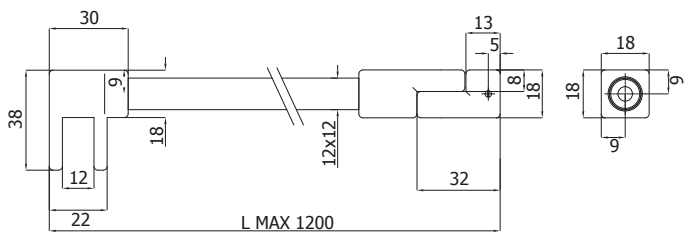
#### B-220

- Barra di supporto snodata Square riducibile a piacere muro/vetro.
  - Square adjustable support bar wall/glass, it is possible to cut the bar to adjust its size.
  - Eckige Stabilisationsstange Wand/Glas, beliebig Kürzbar.
- CR - NS - NO - CF - BV - OL - OS - RM - BI



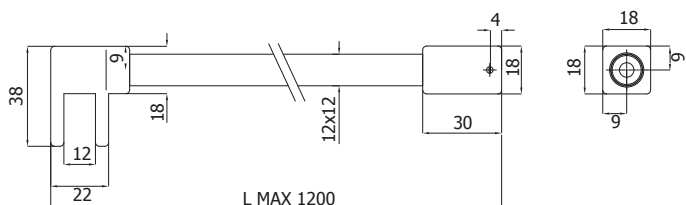
#### B-220-F

- Barra di supporto snodata quadra muro-vetro, con attacco fisso a vetro.
  - Square adjustable support bar wall-glass, fixed glass connector.
  - Eckige Stabilisationsstange Wand-Glas, verstellbar, fester Glasanschluss
- CR - NS - NO - CF - BV - OL - OS - RM - BI



#### B-221

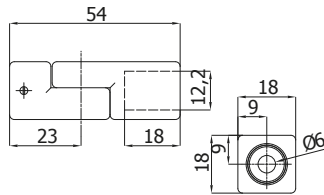
- Barra di supporto quadra a 90° vetro/muro.
  - Square adjustable support bar wall-glass 90°.
  - Eckige Stabilisationsstange Wand-Glas 90°.
- CR - NS - NO - CF - BV - OL - OS - RM - BI



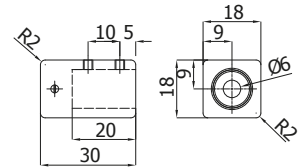
CR	NS	NO	CF	BV	OL	OS	RM	BI
Cromo lucido Polished chrome Chrom glänzend	Nickel satinato Satin nickel Ähnlich Edelstahl matt	Nero opaco Matt black Schwarz matt	Canna di fucile Gunmetal grey Tief schwarz matt	Bronzo scuro Dark bronze Dunkelbraun	Ottone lucido Polished brass Messing Poliert	Oro satinato Satin gold Gold matt	Rame satinato Satin copper Kupfer matt	Bianco opaco Matt white Weiss matt


**B-224-R**

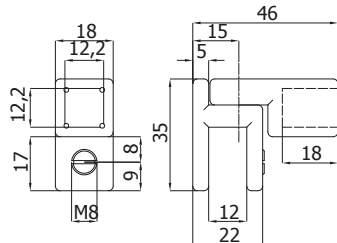
- Attacco a muro snodato per barra di supporto quadra.
  - Adjustable wall connector for square support bar.
  - Eckige Stabilisationsstange Wandanschluss verstellbar.
- CR - NS - NO - CF - BV - OL - OS - RM - BI


**B-224**

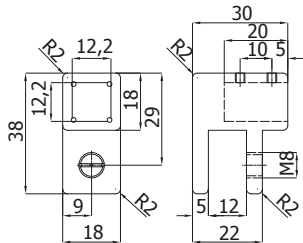
- Attacco a muro x barra di supporto quadra square.
  - Wall fitting with swivel clamp.
  - Drehbarer wandanschluss.
- CR - NS - NO - CF - BV - OL - OS - RM - BI


**B-225-R**

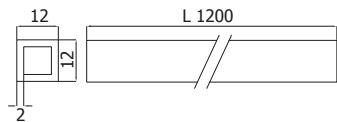
- Attacco a vetro barra di supporto quadra square.
  - Glass fitting with swivel clamp.
  - Drehbarer glasanschluss.
- CR - NS - NO - CF - BV - OL - OS - RM - BI


**B-225**

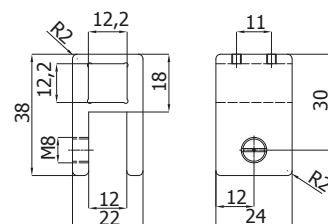
- Attacco a vetro barra di supporto quadra square.
  - Glass fitting with swivel clamp.
  - Drehbarer glasanschluss.
- CR - NS - NO - CF - BV - OL - OS - RM - BI


**B-223**

- Barra di supporto snodata riducibile muro/vetro
  - Square adjustable support bar wall-glass
  - Eckige stabilisationsstange wand-glas, verstellbar
- CR - NS - NO - CF - BV - OL - OS - RM - BI


**B-222**

- Attacco a vetro lineare passante x barra quadra.
  - Glass connector through with adjustable positioning on the bar.
  - Glasanschluss mit durchgangsbohrung.
- CR - NS - NO - CF - BV - OL - OS - RM - BI



<b>CR</b> Cromo lucido Polished chrome Chrom glänzend	<b>NS</b> Nickel satinato Satin nickel Ähnlich Edelstahl matt	<b>NO</b> Nero opaco Matt black Schwarz matt	<b>CF</b> Canna di fucile Gunmetal grey Tief schwarz matt	<b>BV</b> Bronzo scuro Dark bronze Dunkelbraun	<b>OL</b> Ottone lucido Polished brass Messing Poliert	<b>OS</b> Oro satinato Satin gold Gold matt	<b>RM</b> Rame satinato Satin copper Kupfer matt	<b>BI</b> Bianco opaco Matt white Weiss matt
--	--	---	--	---	---	--	---	---

SEPARÉ

# BARRE DI SUPPORTO TONDE

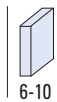
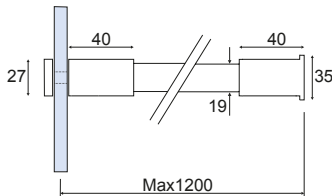
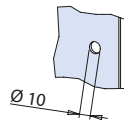
## ROUND SUPPORT BARS / RUNDE STABILISATIONSTANGEN



### B-171

- Barra di fissaggio vetro/muro.
- Glass to wall fixing bar.
- Stabilisationsstange Glas/Wand.

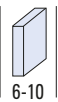
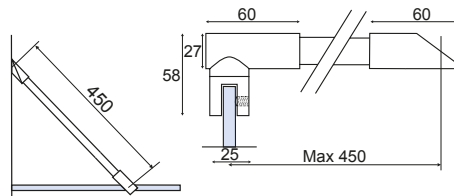
CR - NS



### B-160

- Barra di fissaggio vetro/muro 45°.
- Glass to wall 45° fixing bar.
- Stabilisationsstange Glas-Wand 45°.

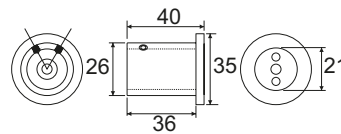
CR - NS



### B-174

- Terminale a muro per barre fermavetro Ø 19 mm.
- Wall fixing bar end for Ø 19 mm tube.
- Drehbar Halterungen für Stabilisationsstange.

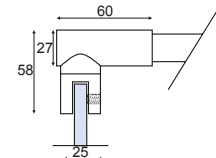
CR - NS



### B-185

- Attacco a vetro per tubo Ø 19 mm.
- Ottone forgiato.
- Glass clamp for 19 mm tube. Forged brass.
- Rohrverbinder / Glas für Rohr Ø 19 mm.
- Messing geschmiedet.

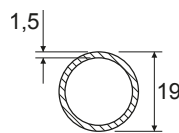
CR - NS



### B-175 (L=1200 mm) B-176 (L=2000 mm)

- Tubo inox lucido Ø 19 mm.
- Polished stainless steel tube Ø 19 mm.
- Halterungen für Stabilisationsstange.

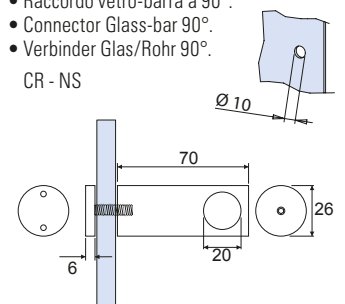
CR - NS



### B-181

- Raccordo vetro-barra a 90°.
- Connector Glass-bar 90°.
- Verbinder Glas/Rohr 90°.

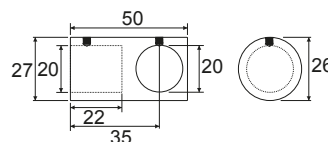
CR - NS



### B-172

- Raccordo di congiunzione a 90° per tubo Ø 19 mm.
- Forged brass 90° connection joint for 19 mm tube.
- Stabilisationsstange T-Stück für 19 mm Rohr.

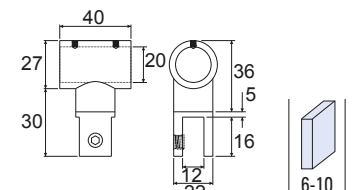
CR - NS



### B-163

- Attacco a vetro foro passante per tubo Ø 19 mm.
- Glass clamp for 19 mm tube.
- Rohrverbinder/Glas für Rohr Ø 19 mm.

CR - NS

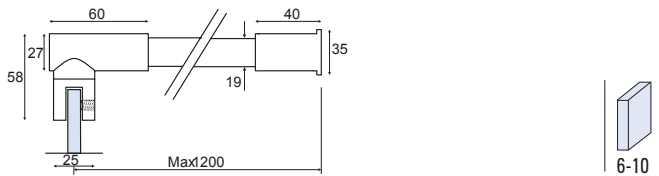


SEPARÉ


**B-161**

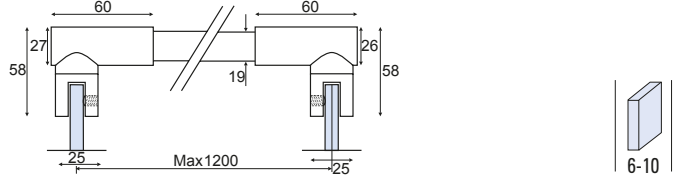
- Barra di fissaggio vetro/muro 90°.
- Glass to wall 90° fixing bar.
- Stabilisationsstange Glas-Wand.

CR - NS


**B-162**

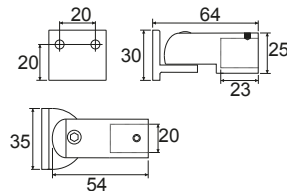
- Barra di fissaggio vetro/vetro.
- Glass to glass fixing bar.
- Stabilisationsstange Glas-Glas.

CR - NS


**B-167**

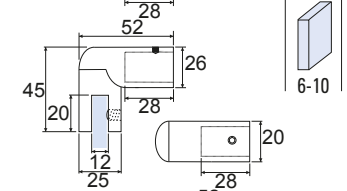
- Fermavetro snodata a muro.
- Ends Forged brass.
- Halterungen für Stabilisationsstange.

CR - NS


**B-166**

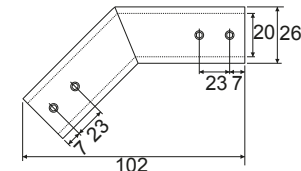
- Terminali per barra.
- Articulated glass to wall bar.
- Drehbar Messing geschmiedet.

CR - NS


**B-164**

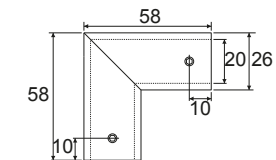
- Raccordo a 135° per tubo Ø19 mm.
- 135° connector for 19 mm tube Forged brass.
- Rohrverbinder 135° für Rohr Ø 19 mm.

CR - NS


**B-165**

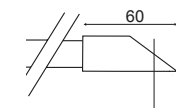
- Raccordo a 90° per tubo Ø19 mm.
- 90° connector for 19 mm tube.
- Rohrverbinder 90° für Rohr Ø 19 mm.

CR - NS


**B-184**

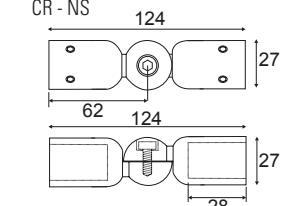
- Terminale a muro 45° per barre fermavetro Ø 19 mm.
- Wall fixing bar 45° end for Ø 19 mm tube.
- Drehbar Halterungen 45° für Stabilisationsstange.

CR - NS


**B-173**

- Raccordo regolabile per tubo Ø 19 mm.
- Adjustable connector for Ø 19 mm tube.
- Verbinder für 19 mm Rohr Verstellbar.

CR - NS


**CR**  
 Cromo lucido  
 Polished chrome  
 Chrom glänzend

**NS**  
 Nickel satinato  
 Satin nickel  
 Ähnlich Edelstahl matt

SEPARÉ

## BARRE DI SUPPORTO TONDE ROUND SUPPORT BARS / RUNDE STABILISATIONSTANGEN

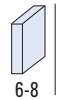
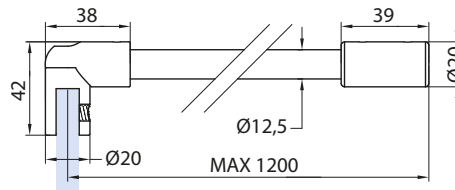
- Materiale: Ottone.
- Material: Brass.
- Material: Messing.



### B-211

- Barra di fissaggio vetro/muro.
- Glass to wall fixing bar.
- Stabilisationsstange Glas/Wand.

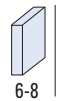
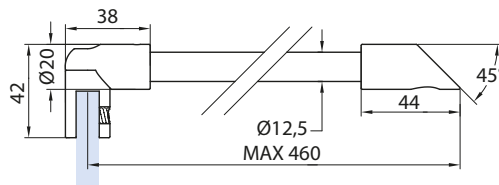
CR - NS - NO



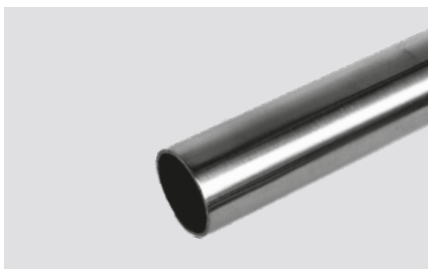
### B-210

- Barra di fissaggio vetro/muro 45°.
- Glass to wall 45° fixing bar.
- Stabilisationsstange Glas-Wand 45°.

CR - NS - NO



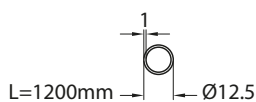
## COMPONENTI / COMPONENTS / EINZELTEILE



### B-213 (L=1200 mm)

- Tubo inox lucido Ø 12,5 mm.
- Polished stainless steel tube Ø 12,5 mm.
- Halterungen für Stabilisationsstange.

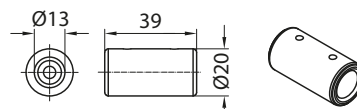
CR - NS - NO



### B-214

- Terminale a muro per barre fermavetro Ø 12,5 mm.
- Wall fixing bar end for Ø 12,5 mm tube.
- Drehbar Halterungen für Stabilisationsstange.

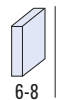
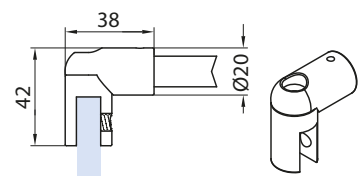
CR - NS - NO



### B-215

- Attacco a vetro per tubo Ø 12,5 mm. Ottone forgiato.
- Glass clamp for 12,5 mm tube. Forged brass.
- Rohrverbinder / Glas für Rohr Ø 12,5 mm. Messing geschmiedet.

CR - NS - NO



**CR**  
Cromo lucido  
Polished chrome  
Chrom glänzend  
196

**NS**  
Nickel satinato  
Satin nickel  
Ähnlich Edelstahl matt

**NO**  
Nero opaco  
Matt black  
Schwarz matt

## ACCESSORI

ACCESSORIES / ZUBEHÖRE

- MORSETTI
- CLAMPS
- KLEMMBESCHLÄGE



**B-155/40 / B-154/40 / B-156/40 / B-152/40 / B-153/40**  
**B-157/40 / B-158/40 / B-182 / B-183 / B-187 / B-188**  
**B-159-50 / B-160-50**

► 200 - 195

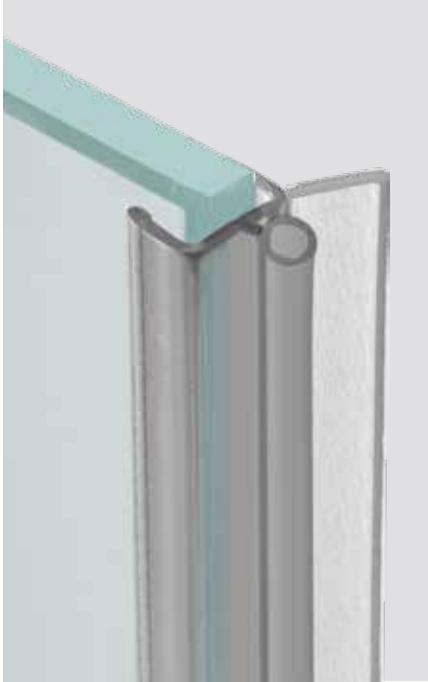
- RAGNETTI
- CONNECTORS
- WINKELVERBINDER



**B-20 / B-25 / B-21 / B-30 / B-35 / B-16 / B-17**

► 204 - 197

- GUARNIZIONI MINI
- MINI GASKETS
- MINI



**B-115-20 / B-115-25 / B-142-8  
 B-144-8 / B-116-8 / B-117-8  
 B-118-8 / B-119-8**

► 198 - 199

- GUARNIZIONI
- GASKETS
- DICHTUNGEN



**B-151-26 / B-151-20 / B-141-8  
 B-141-10 / B-143-8 / B-143-10  
 B-145-8 / B-145-10 / B-147-8  
 B-147-10 / B-149-8 / B-149-10  
 B-152-MIX / B-153-MIX / B-154-MIX  
 B-155-MIX  
 WRU-C-BUMP-MT12 / WRU-M 80/50**

► 200 - 203

- POMOLI, NICCHIE, MANIGLIONI
- KNOBS, SLIDING HANDLES, HANDLES
- KNÖPFE, GRIFFMUSCHEL, STOSSGRIFFE



**B-196 / B-198 / V-024 25 / V-024 30  
 V-024 38 / B-168 / B-169 / V-1107  
 B-197 / B-177 / B-178 / B-194 / B-195  
 B-192 / V-019 / V-1056 / V-1056-2  
 V-1105 / B-191-80 / B-191-240  
 B-193 / V-526 / V-524 / B-170 / V-528  
 DIV-008 / DIV-007 / DIV-006**

**SQUARE 10-INC / POR-0408 V  
 POR-0400 V / ROUND MINI 16  
 SQUARE MINI 15 / SQUARE 10  
 SQUARE 15 / SQ01/SQ02  
 B-120 / B-121 / B-122 / B-186  
 B-124 / B-125**

**PG-CHIAVE**

► 212 - 215

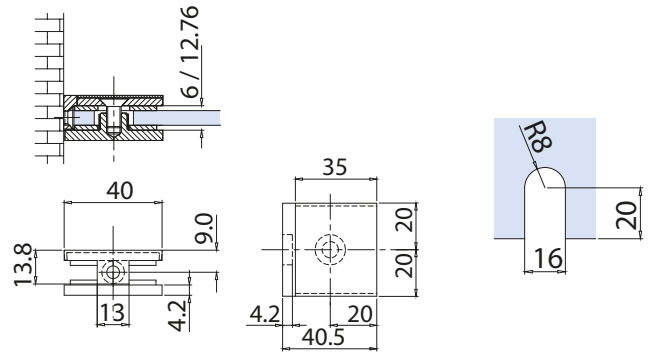
# MORSETTI CLAMPS / KLEMMBESCHLÄGE



### B-155-40

- Morsetto 40x40 mm vetro/muro. Materiale: Ottone.
- Glass to wall clamp 40x40 mm. Material: Brass.
- Verbinder Glas-Wand, 40x40 mm mit nicht sichtbaren Schrauben. Material: Messing.

CR - NS



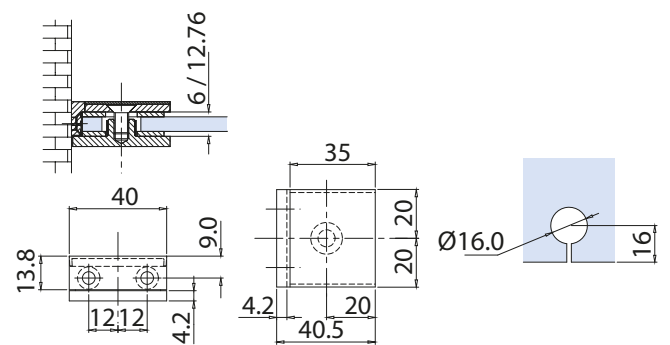
xme312



### B-154-40

- Morsetto 40x40 mm vetro/muro. Materiale: Ottone.
- Glass to wall clamp 40x40 mm. Material: Brass.
- Verbinder Glas-Wand, 40x40 mm mit nicht sichtbaren Schrauben. Material: Messing.

CR - NS



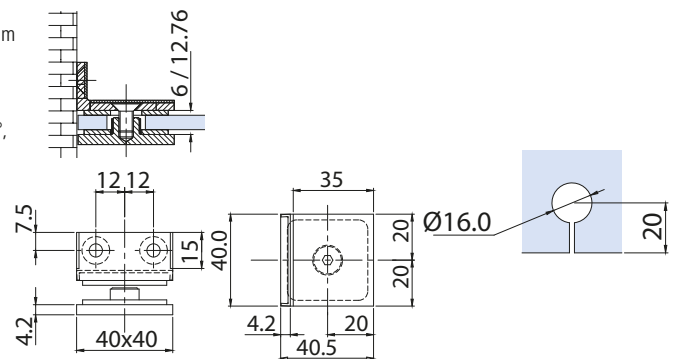
xme312



### B-156-40

- Morsetto angolare 90° 40x40 mm vetro/muro. Materiale: Ottone.
- Glass to wall angular clamp 90° 40x40 mm. Material: Brass.
- Winkelverbinder Glas-Wand 90°, 40x40 mm mit nicht sichtbaren Schrauben. Material: Messing.

CR - NS



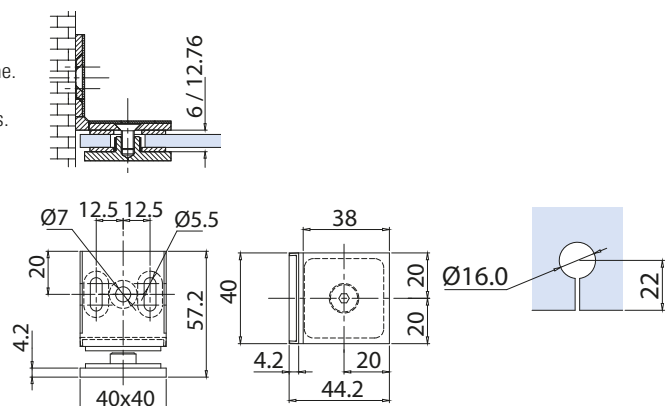
xme313



### B-152-40

- Morsetto angolare 40x40 mm vetro/muro 90°. Materiale: Ottone.
- Glass to wall 90° angular clamp 40x40 mm. Material: Brass.
- Winkelverbinder Glas-Wand 90°, 40x40 mm mit nicht sichtbaren Schrauben. Material: Messing.

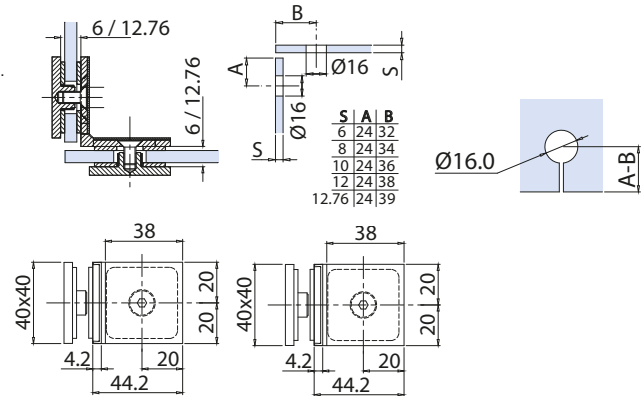
CR - NS - NO



xme312


**B-153-40**

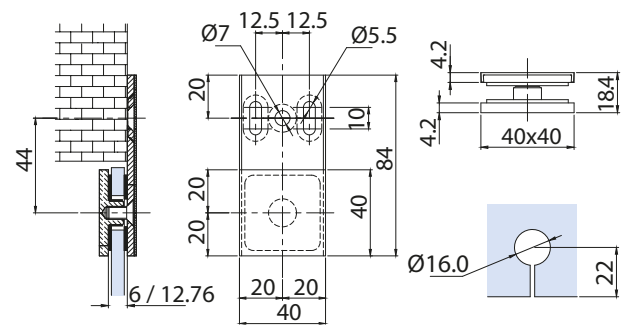
- Morsetto angolare 40x40 mm vetro/vetro 90°. Materiale: Ottone.
  - Glass to glass 90° angular clamp 40x40 mm. Material: Brass.
  - Winkelverbinder Glas-Glas 90°, 40x40 mm mit nicht sichtbaren Schrauben. Material: Messing.
- CR - NS - NO



xme312


**B-157-40**

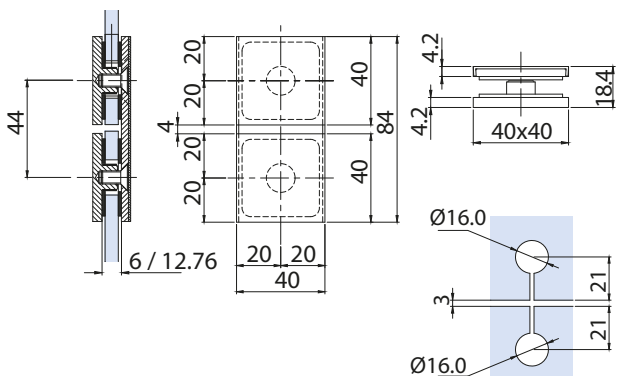
- Morsetto 40x40 mm vetro/muro 180°. Materiale: Ottone.
  - Glass to wall clamp 180° 40x40 mm. Material: Brass.
  - Verbinder Glas-Wand 180°, 40x40 mm mit nicht sichtbaren Schrauben. Material: Messing.
- CR - NS - NO



xme313


**B-158-40**

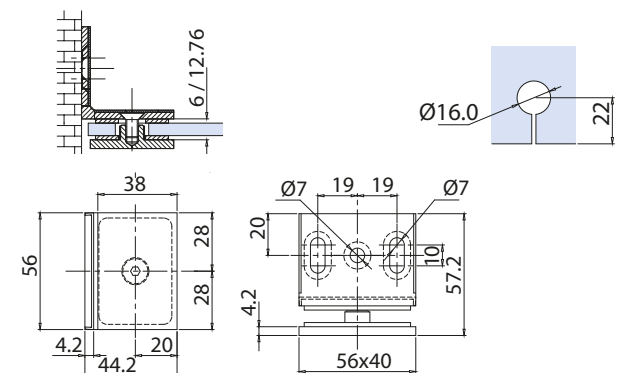
- Morsetto 40x40 mm vetro/vetro 180°. Materiale: Ottone.
  - Glass to glass clamp 180°, 40x40 mm. Material: Brass.
  - Verbinder Glas-Glas 180°, 40x40 mm mit nicht sichtbaren Schrauben. Material: Messing.
- CR - NS



xme313


**B-182**

- Morsetto angolare 56x40 mm vetro/muro 90°. Materiale: Ottone.
  - Glass to wall 90° angular clamp 56x40 mm. Material: Brass.
  - Winkelverbinder Glas-Wand 90°, 56x40 mm mit nicht sichtbaren Schrauben. Material: Messing.
- CR - NS



xme314

**CR**  
Cromo lucido  
Polished chrome  
Chrom glänzend

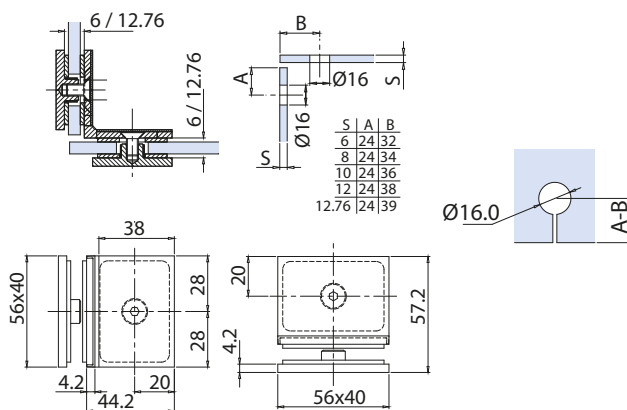
**NS**  
Nickel satinato  
Satin nickel  
Ähnlich Edelstahl matt

**NO**  
Nero opaco  
Matt black  
Schwarz matt



**B-183**

- Morsetto angolare 56x40 mm vetro/vetro 90°. Materiale: Ottone.
  - Glass to glass 90° angular clamp 56x40 mm. Material: Brass.
  - Winkelverbinder Glas-Glas 90°, 56x40 mm mit nicht sichtbaren Schrauben. Material: Messing.
- CR - NS

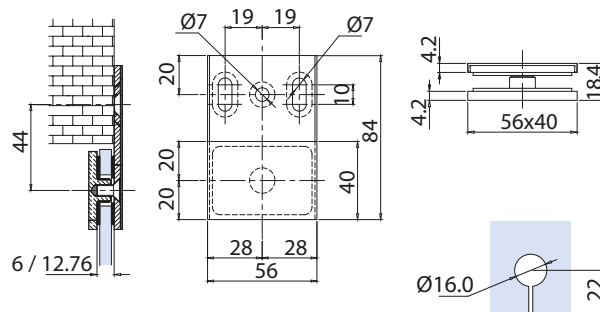


xme314



**B-187**

- Morsetto 56x40 mm vetro/muro 180°. Materiale: Ottone.
  - Glass to wall clamp 180°, 56x40 mm. Material: Brass.
  - Verbinder Glas-Wand 180°, 56x40 mm mit nicht sichtbaren Schrauben. Material: Messing.
- CR - NS

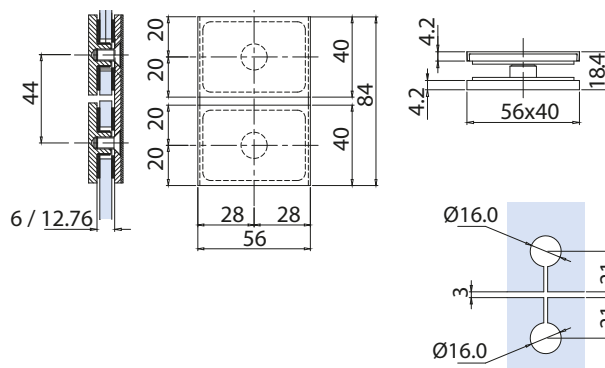


xme314



**B-188**

- Morsetto 56x40 mm vetro/vetro 180°. Materiale: Ottone.
  - Glass to glass clamp 180°, 56x40 mm. Material: Brass.
  - Verbinder Glas-Glas 180°, 56x40 mm mit nicht sichtbaren Schrauben. Material: Messing.
- CR - NS

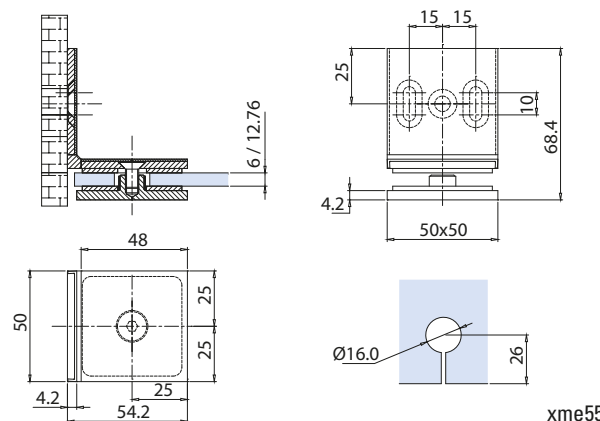


xme314



**B-159-50**

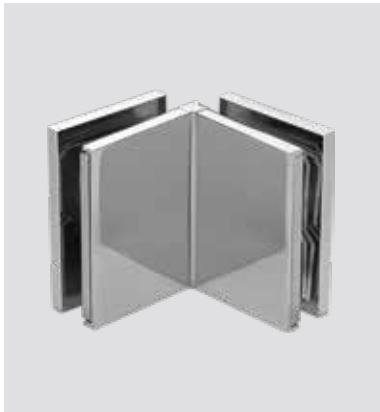
- Morsetto angolare 50x50 mm vetro/muro senza viti in vista.
  - Glass to wall 90° angular clamp 50x50 mm with not visible screws.
  - Winkelverbinder Glas-Wand 90° 50x50 mm mit nicht sichtbaren Schrauben.
- CR



xme553

**CR**  
Cromo lucido  
Polished chrome  
Chrom glänzend  
202

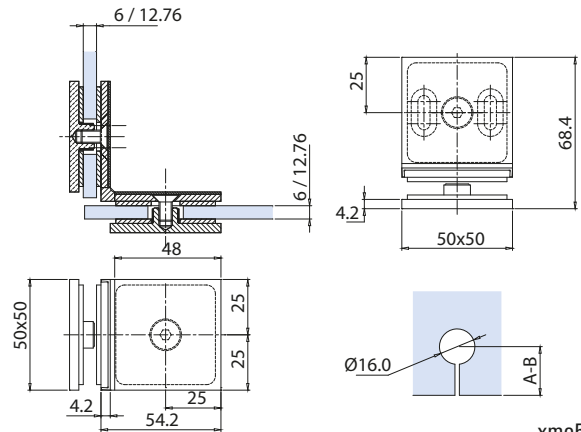
**NS**  
Nickel satinato  
Satin nickel  
Ähnlich Edelstahl matt


**B-160-50**

- Morsetto angolare 50x50 mm vetro/vetro 90°. Senza viti a vista.
- Glass to glass 90° angular clamp 50x50 mm. With not visible screws.
- Winkelverbinder Glas-Glas 90°, 50x50 mm mit nicht sichtbaren Schrauben. Ohne sichtbare Schrauben.

CR - NS

S	A	B
6	28	36
8	28	38
10	28	40
12	28	42
12.76	28	43

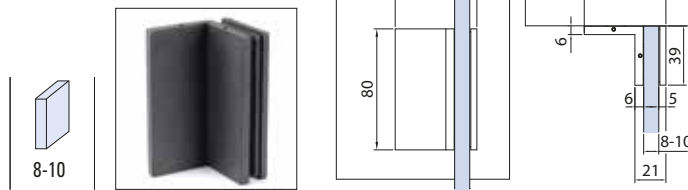


xme553


**B-746**

- Morsetto angolare 39x39mm vetro-muro 90°
- Glass to wall 39x39mm angular clamp
- Winkelverbinder 39x39mm Glas-Wand

CR - NS - NO

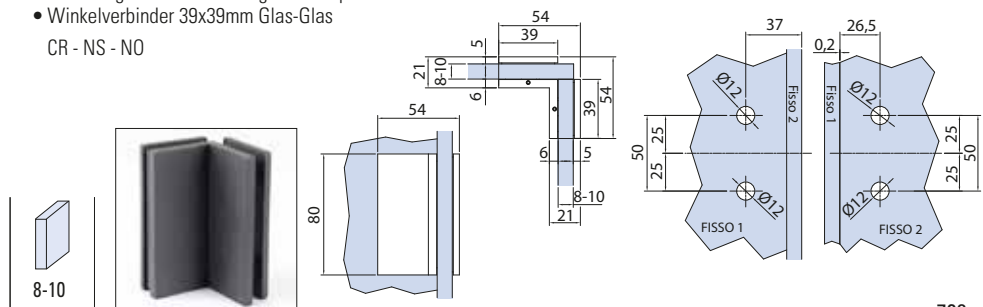
 LAVORAZIONE VETRO  
 GLASS PREPARATION  
 GLASBEARBEITUNG


xme708d


**B-746-V**

- Morsetto angolare 39x39mm vetro-vetro 90°
- Glass to glass 39x39mm angular clamp
- Winkelverbinder 39x39mm Glas-Glas

CR - NS - NO

 LAVORAZIONE VETRO  
 GLASS PREPARATION  
 GLASBEARBEITUNG


xme708e

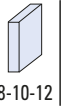
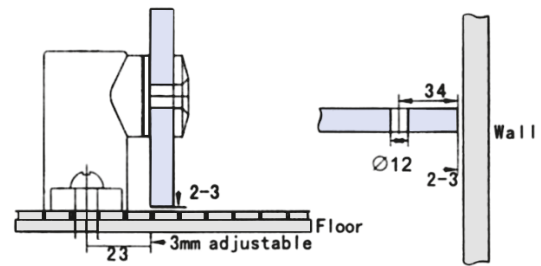
# RAGNETTI

## CONNECTOR / WINKELVERBINDER



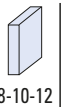
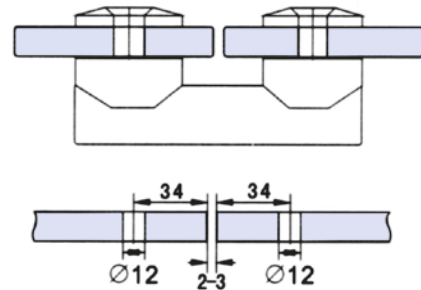
### B-20

- Ragnetto muro/vetro.  
Materiale: Inox.
- Connector glass/wall.  
Material: Stainless.
- Winkelverbinder Glas/Wand.  
Material: Edelstahl.  
IX - IL



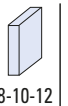
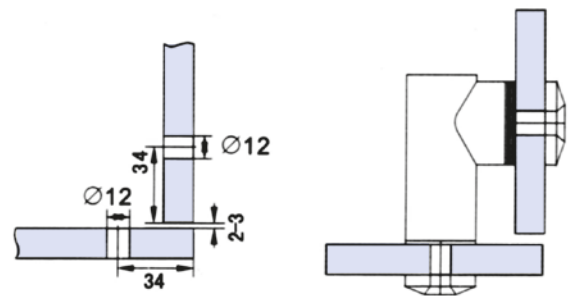
### B-25

- Barra di connessione 2 vetri.  
Materiale: Inox.
- Connecting rod for 2 glass.  
Material: Stainless.
- Verbinder 2 Gläser.  
Material: Edelstahl.  
IX - IL



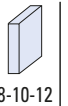
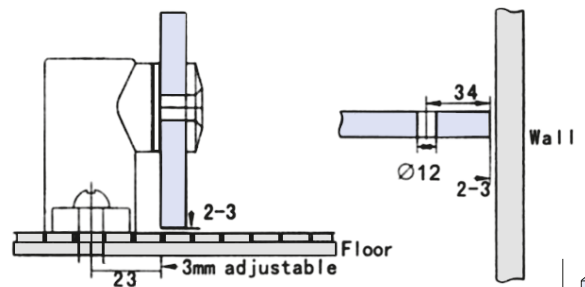
### B-21

- Ragnetto vetro/vetro.  
Materiale: Inox.
- Connector glass/glass.  
Material: Stainless.
- Winkelverbinder Glas/Glas.  
Material: Edelstahl.  
IX - IL



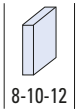
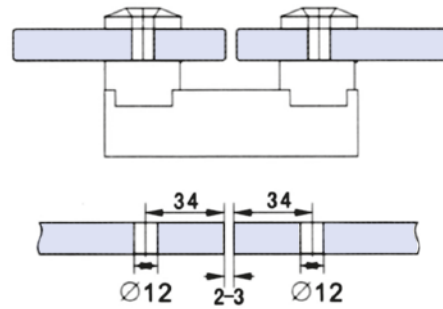
### B-30

- Ragnetto muro/vetro.  
Materiale: Inox.
- Connector glass/wall.  
Material: Stainless.
- Winkelverbinder Glas/Wand.  
Material: Edelstahl.  
IX - IL

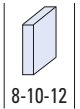
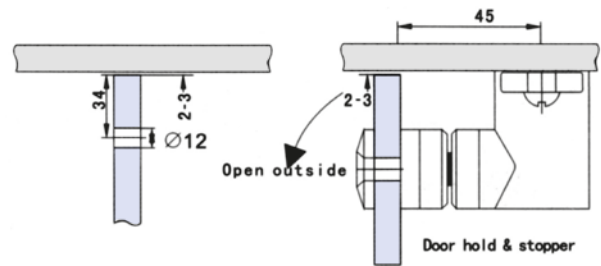



**B-35**

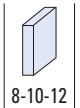
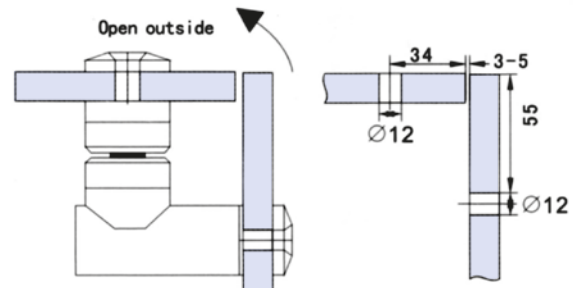
- Barra di connessione 2 vetri.  
Materiale: Inox.
  - Connecting rod for 2 glass.  
Material: Stainless.
  - Verbinder 2 Gläser.  
Material: Edelstahl.
- IX - IL


**B-16**

- Fermaporta con attacco a terra e calamita.  
Materiale: Inox.
  - Magnetic door hold and stopper wall/glass.  
Material: Stainless.
  - Magnetische Türstopper Wand/Glas.  
Material: Edelstahl.
- IX - IL

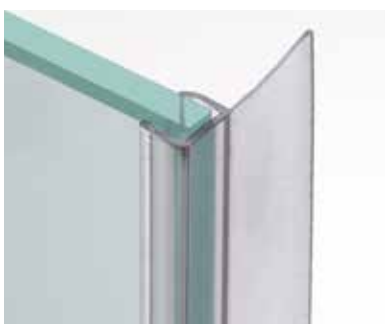
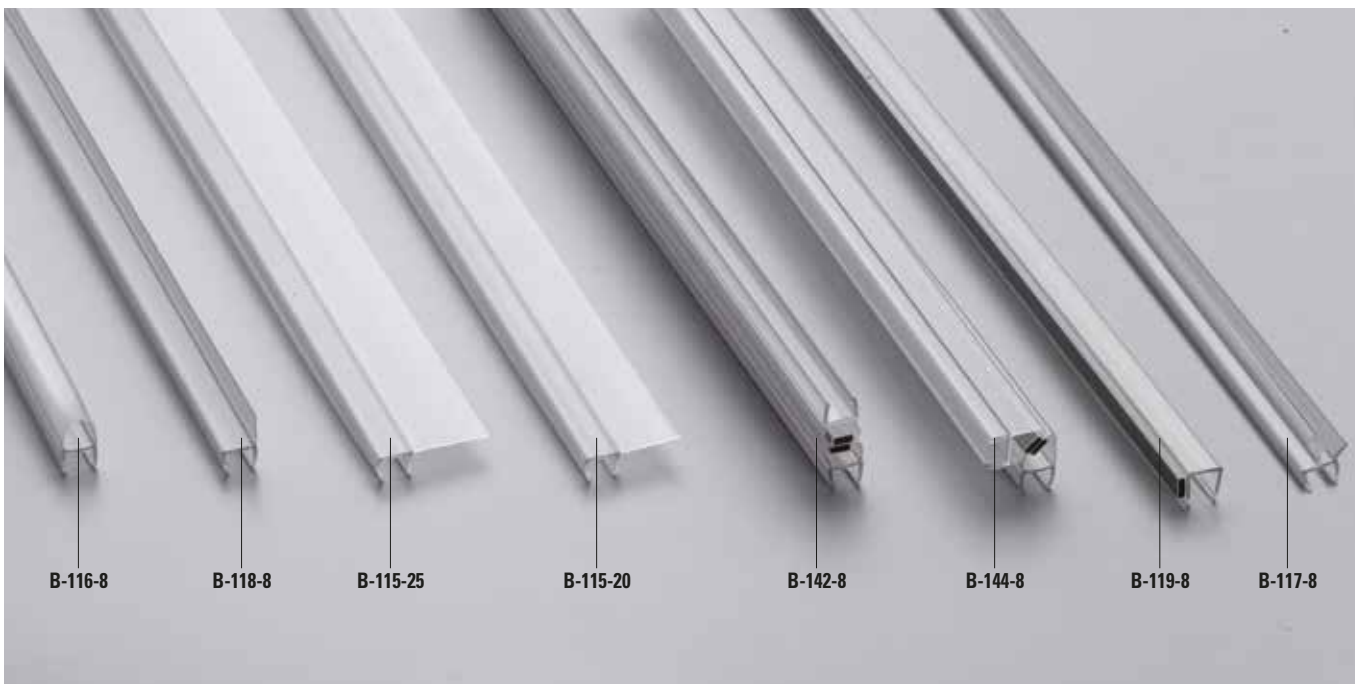

**B-17**

- Fermaporta con attacco a vetro e calamita.  
Materiale: Inox.
  - Magnetic door hold and stopper glass/glass.  
Material: Stainless.
  - Magnetische Türstopper Glas/Glas.  
Material: Edelstahl.
- IX - IL



# GUARNIZIONI MINI

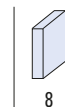
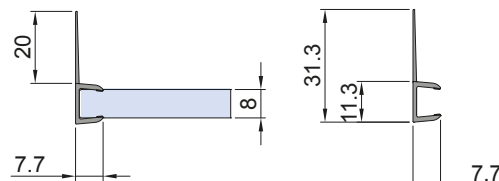
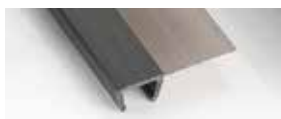
## MINI GASKETS / MINI DICHTUNGEN



### B-115-20

- Guarnizione per scorrevoli in PVC trasparente.
- Sliding doors seal in transparent PVC.
- PVC Dichtprofil für Schiebetüren.

L=2500



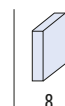
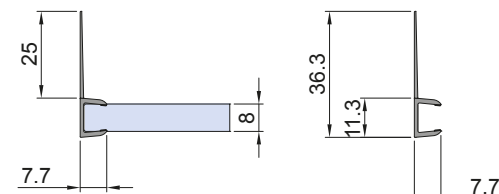
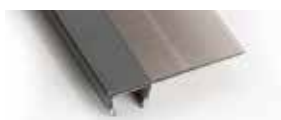
8  
xfb-095



### B-115-25

- Guarnizione per scorrevoli in PVC trasparente.
- Sliding doors seal in transparent PVC.
- PVC Dichtprofil für Schiebetüren.

L=2500

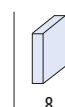
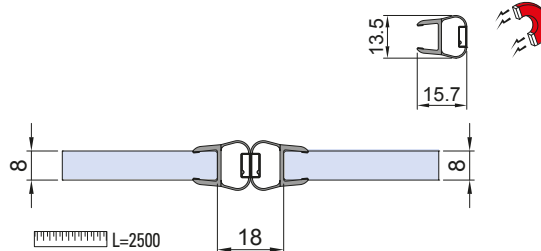


8  
xfb-095



### B-142-8

- Guarnizione magnetica in PVC trasparente per chiusura a 180°.
- PVC magnetic seal for 180° closing doors in transparent PVC twin bars.
- PVC Magnetdichtung für Glas-Glas 180° Paar Profile.



8  
xfb-093

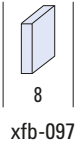
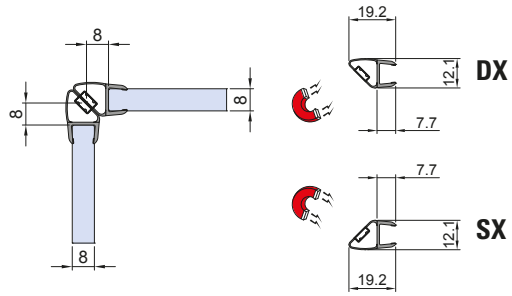
**Trasparenti**  
Clear  
Klar

**NO**  
Nero opaco  
Matt black  
Matt schwarz

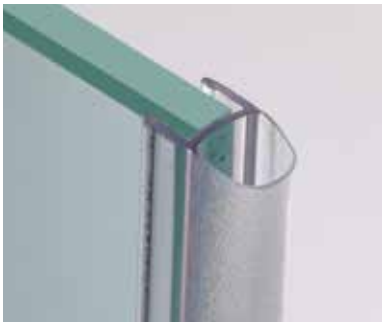

**B-144-8**

- Guarnizione magnetica in PVC trasparente per chiusure a 90°.
- Magnetic seal for 90° closing doors in transparent PVC
- .

L=2500

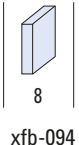
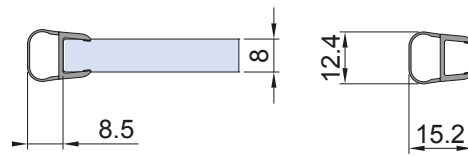


xfb-097

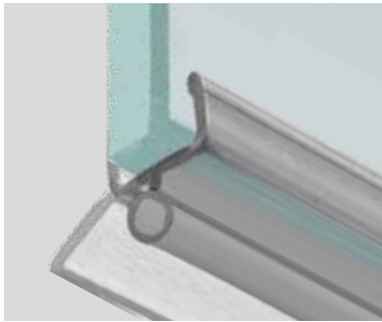

**B-116-8**

- Guarnizione a palloncino vetro/muro in PVC trasparente.
- Glass to wall ball seal transparent PVC.
- PVC Dichtprofil Glas-Wand.

L=2500

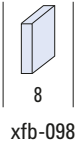
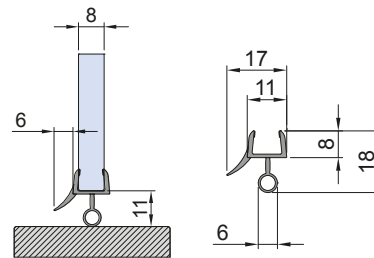


xfb-094


**B-117-8**

- Guarnizione gocciolatoio in PVC trasparente.
- Drip flap seal transparent PVC.
- PVC Dichtprofil für den unteren Wannenanschluss.

L=2500

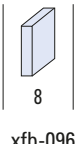
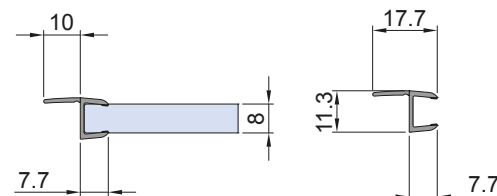


xfb-098


**B-118-8**

- Guarnizione vetro/vetro in PVC trasparente per chiusure a 180°.
- Door stop seal transparent PVC for glass-glass 180°.
- PVC Dichtprofil für Glas-Glas 180°.

L=2500

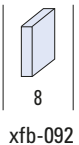
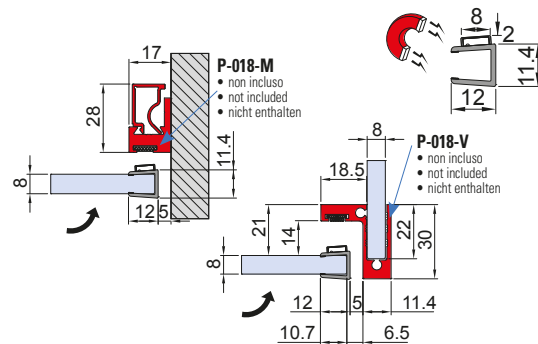


xfb-096


**B-119-8**

- Guarnizione bordo vetro con magneti, per chiusura a battuta.
- Closure gasket with magnetic seal.
- Vertikal Dichtung für Magnetische Zuhaltung.

L=2500



xfb-092

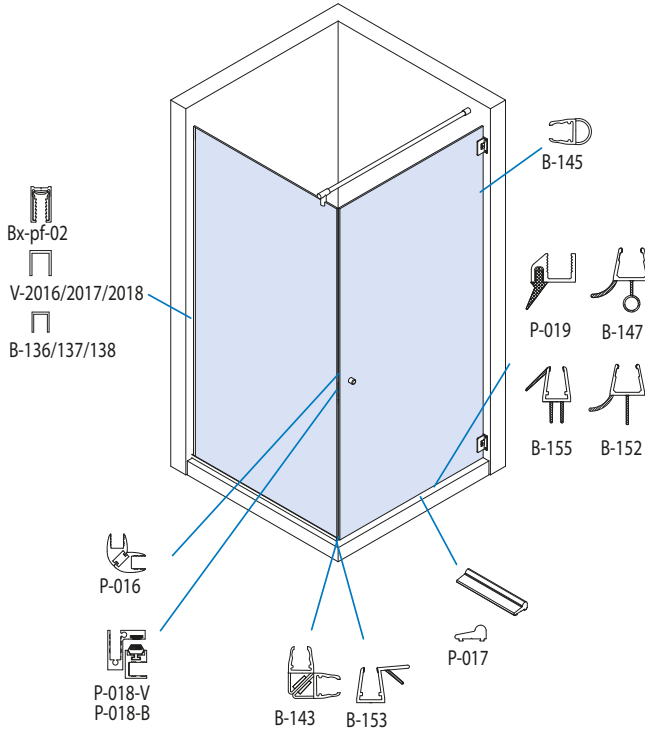
Trasparenti  
Clear  
Klar

**NO**  
Nero opaco  
Matt black  
Matt schwarz

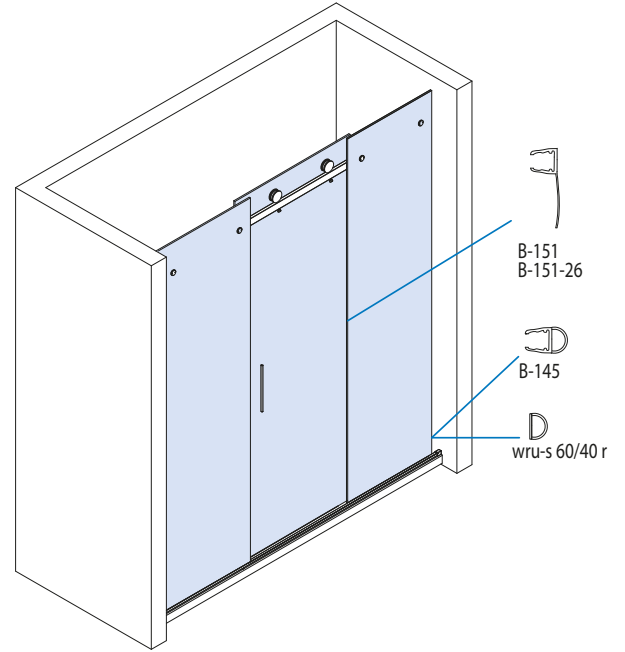
# GUARNIZIONI GASKETS / DICHTUNGEN

- Alcune tipologie di applicazione
- Some application typologies
- Einigen kompositionsmöglichkeiten des system

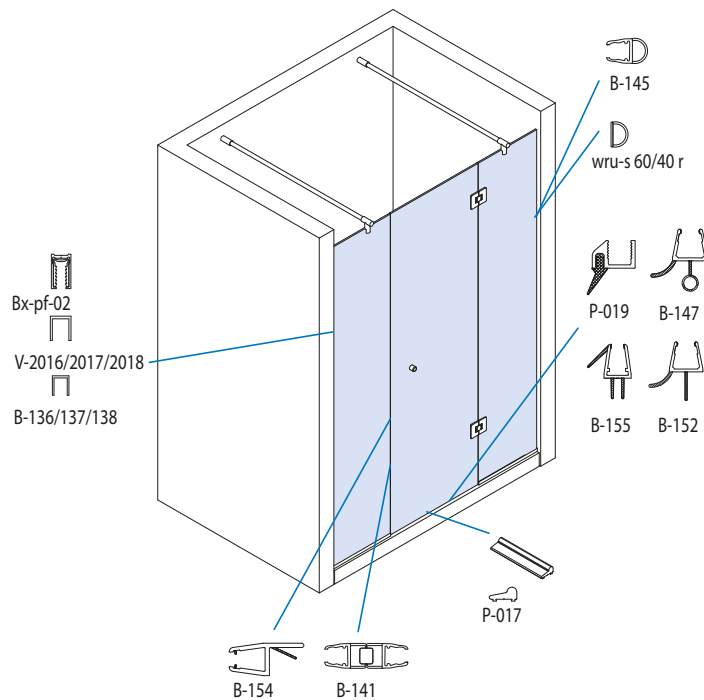
- Doccia a battente ad angolo con vetro fisso.
- Angled shower cabin with swing door and fixed panel.
- Eck-Duschkabin mit Drehtür und Seitenteil.



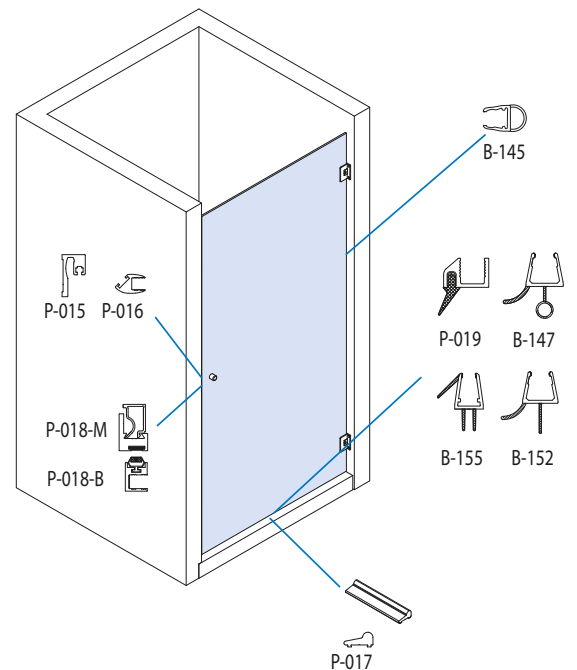
- Doccia scorrevole con vetri fissi laterali.
- Shower cabin with sliding door and fixed side panels.
- Duschkabin mit Schiebetür und Seitenteilen.



- Doccia a battente con vetri fissi laterali.
- Shower cabin with swing door and fixed side panels.
- Duschkabin mit Drehtür und Seitenteilen.



- Doccia a battente.
- Shower cabin with swing door.
- Duschkabin mit Drehtür.

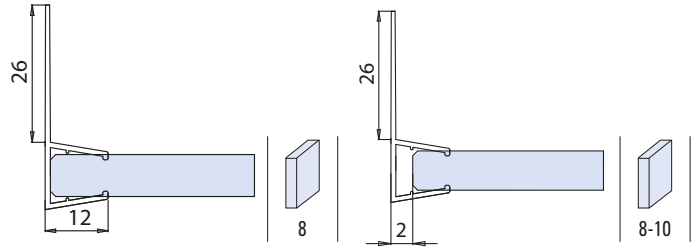


xme318


**B-151-26**

- Guarnizione per scorrevoli in PVC trasparente.
- Sliding doors seal transparent PVC.
- PVC Dichtprofil für Schiebetüren.

1 pcs L=2200

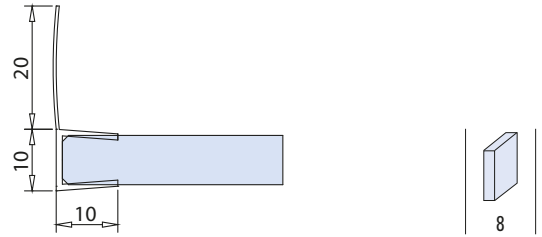


xme390-B

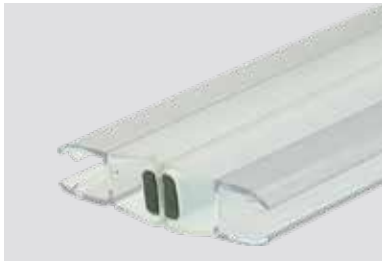

**B-151-20**

- Guarnizione per scorrevoli in PVC trasparente.
- Sliding doors seal transparent PVC.
- PVC Dichtprofil für Schiebetüren.

1 pcs L=2500

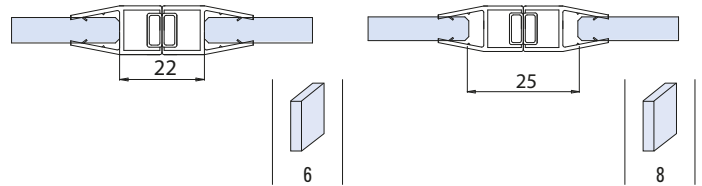


xme390-C


**B-141-8**

- Guarnizione magnetica.
- Pvc magnetic seal.
- Pvc Magnetdichtung für Glas-Glas.

1 pcs L=2500

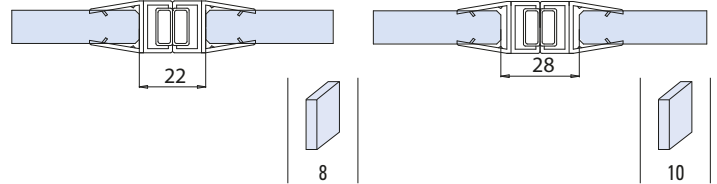


xme390-B


**B-141-10**

- Guarnizione magnetica.
- Pvc magnetic seal.
- Pvc Magnetdichtung für Glas-Glas.

1 pcs L=2500

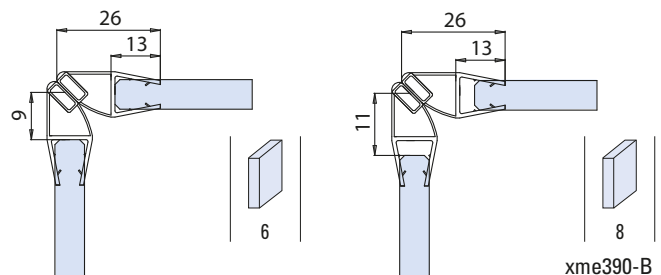


xme390-B


**B-143-8**

- Guarnizione magnetica in PVC trasparente.
- PVC magnetic seal transparent PVC.
- PVC Magnetdichtung für Glas-Glas 90°.

1 pcs L=2500

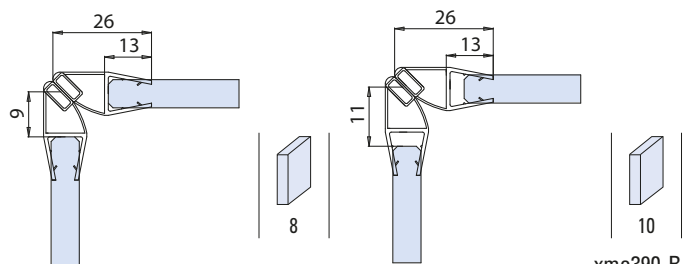


xme390-B


**B-143-10**

- Guarnizione magnetica in PVC trasparente.
- PVC magnetic seal transparent PVC.
- PVC Magnetdichtung für Glas-Glas 90°.

1 pcs L=2500



xme390-B

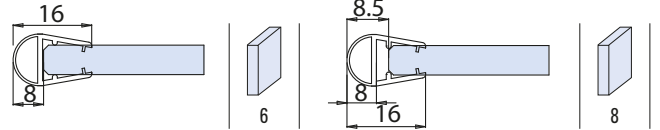




**B-145-8**

- Guarnizione a palloncino vetro/muro in PVC trasparente.
- Glass to wall ball seal transparent PVC.
- PVC Dichtprofil Glas-Wand.

1 pcs L=2500



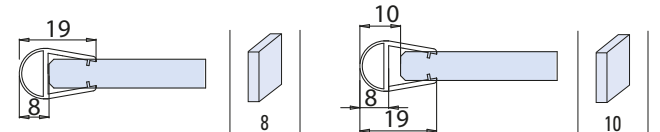
xme390-A



**B-145-10**

- Guarnizione a palloncino vetro/muro in PVC trasparente.
- Glass to wall ball seal transparent PVC.
- PVC Dichtprofil Glas-Wand.

1 pcs L=2500



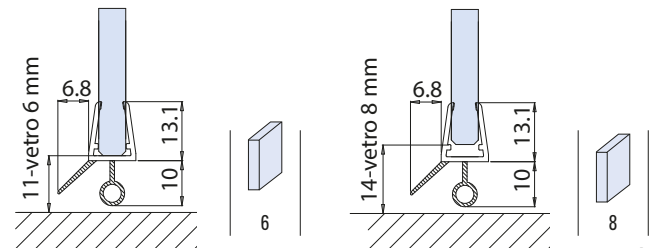
xme390-A



**B-147-8**

- Guarnizione gocciolatoio in PVC trasparente.
- Drip flap seal transparent PVC.
- PVC Dichtprofil für den unteren Wannenanschluss.

1 pcs L=2200



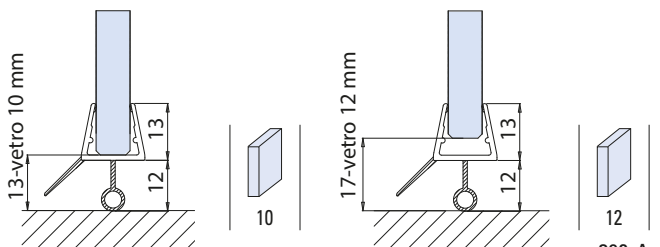
xme390-A



**B-147-10**

- Guarnizione gocciolatoio in PVC trasparente.
- Drip flap seal transparent PVC.
- PVC Dichtprofil für den unteren Wannenanschluss.

1 pcs L=2200



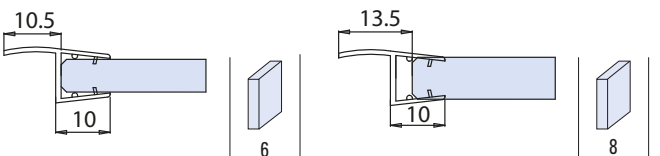
xme390-A



**B-149-8**

- Guarnizione vetro/vetro in PVC trasparente.
- Door stop seal transparent PVC.
- PVC Dichtprofil für Glas-Glas 180°.

1 pcs L=2500



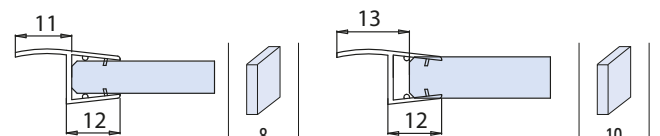
xme390-B



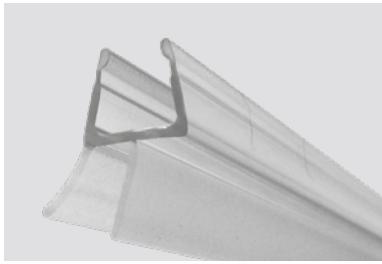
**B-149-10**

- Guarnizione vetro/vetro in PVC trasparente.
- Door stop seal transparent PVC.
- PVC Dichtprofil für Glas-Glas 180°.

1 pcs L=2500

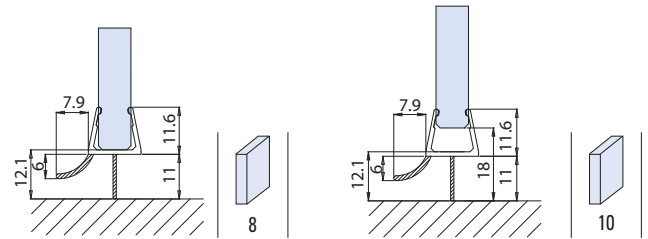


xme390-B


**B-152-MIX**

- Guarnizione gocciolatoio in PVC trasparente.
- Drip flap seal in transparent PVC.
- PVC Dichtprofil für den unteren Wannenanschluss, für 8 und 10 mm Glas.

1 pcs L=2200

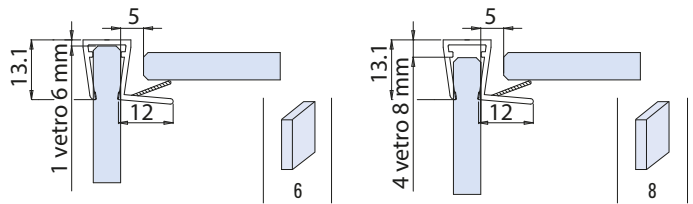


xme390-B


**B-153-MIX**

- Guarnizione a battuta in PVC trasparente.
- Seal profile glass-glass 90° with door stop in transparent PVC.
- PVC Dichtprofil glass-glass 90° mit Türanschlag, für 6 und 8 mm Glas.

1 pcs L=2200

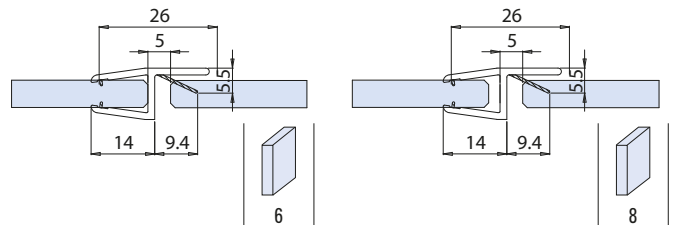


xme390-A


**B-154-MIX**

- Guarnizione "H" a battuta in PVC trasparente.
- Seal profile glass-glass 90° with door stop in transparent PVC.
- PVC Dichtprofil glass-glass 180° mit Türanschlag.

1 pcs L=2200

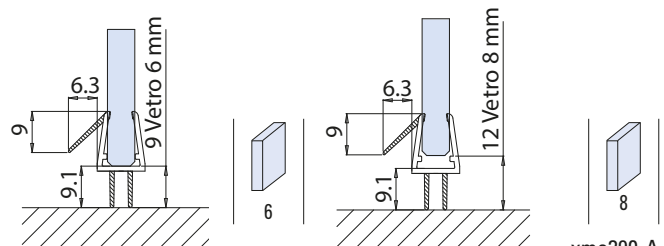


xme390-B


**B-155-MIX**

- Guarnizione con diga e deflettore in PVC trasparente.
- Drip flap seal in transparent PVC.
- PVC Dichtprofil für den unteren Wannenanschluss.

1 pcs L=2200

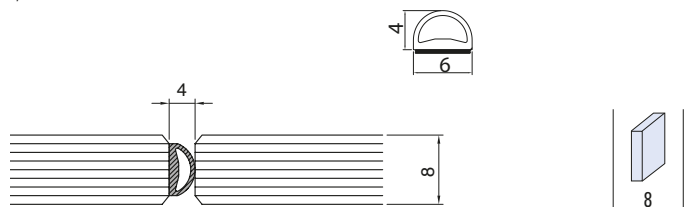


xme390-A


**WRU-C-BUMP-MT12**

- Guarnizione neutra per vetro 8 mm, fissaggio adesivo
- Neutral gasket for glass 8 mm with adhesive fixing
- Dichtungsprofil für 8 mm. selbstklebend

12 m



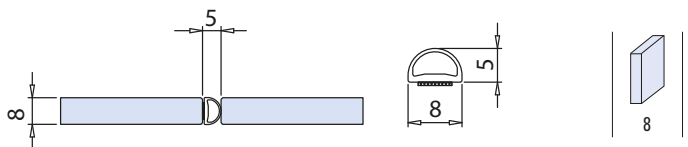
8


**WRU-M 80/50**

- Guarnizione neutra in PVC con fissaggio adesivo
- Neutral PVC gasket with adhesive fixing.
- Dichtungsprofil selbstklebend

5 mtl

- Confezione mt. 5.
- Package unit of 5 mt.
- Verpackungseinheit von 5 lfm.



8

xfb-099

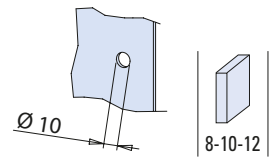
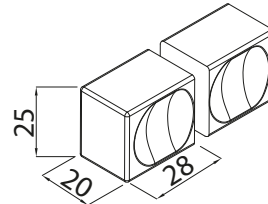
## POMOLI, NICCHIE, MANIGLIONI KNOBS, SLIDING HANDLES, HANDLES / KNÖPFE, GRIFFMUSCHELN, STOSSGRIFFE



### B-196

- Coppia pomoli 25 x 28 mm.
- Pair of doorknobs 25 x 28 mm.
- Paar Türknöpfe 25 x 28 mm.

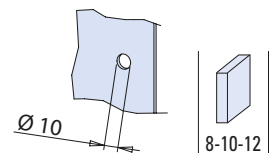
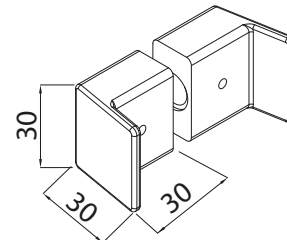
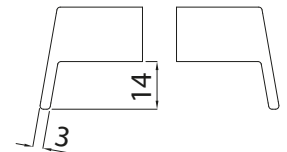
CR - NS - NO - OR



### B-198

- Coppia pomoli 30 x 30 mm.
- Pair of doorknobs 30 x 30 mm.
- Paar Türknöpfe 30 x 30 mm.

CR - NS - NO



### V-024 25

- Coppia pomoli Ø 25 mm.
  - Pair of doorknobs Ø 25 mm.
  - Paar Türknöpfe Ø 25 mm.
- CR - NS

### V-024 30

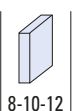
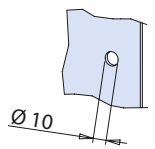
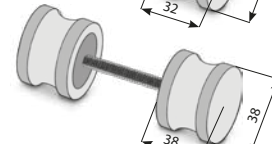
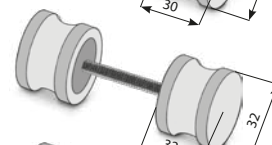
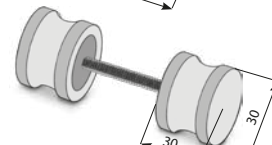
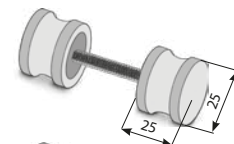
- Coppia pomoli Ø 30 mm.
  - Pair of doorknobs Ø 30 mm.
  - Paar Türknöpfe Ø 30 mm.
- CR - NS - OR

### V-024 32

- Coppia pomoli Ø 32 mm.
  - Pair of doorknobs Ø 32 mm.
  - Paar Türknöpfe Ø 32 mm.
- CR - NS

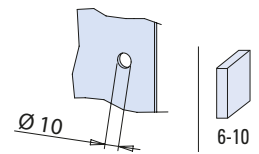
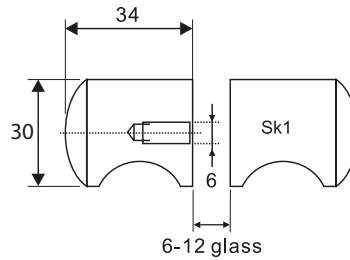
### V-024 38

- Coppia pomoli Ø 38 mm.
  - Pair of doorknobs Ø 38 mm.
  - Paar Türknöpfe Ø 38 mm.
- CR - NS

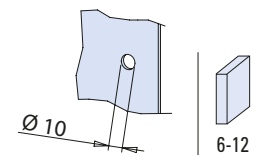
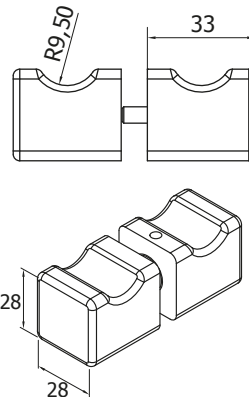



**B-168**

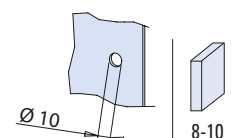
- Pomolo per porte in Zama.
  - Glass doors knob Zamak.
  - Paar Türknöpfe aus Zamak.
- CR - NS - CP - NO


**B-169**

- Coppia pomoli 28 x 28 mm.
  - Pair of doorknobs 28 x 28 mm.
  - Paar Türknöpfe 28 x 28 mm.
- CR


**V-1107**

- Coppia pomoli 35 x 35 mm foro vetro Ø 10 mm
  - Pair of doorknobs 35 x 35 mm. Hole in glass 10 mm
  - Paar Türknöpfe 35 x 35 mm. Glas Bohrung 10 mm
- CR



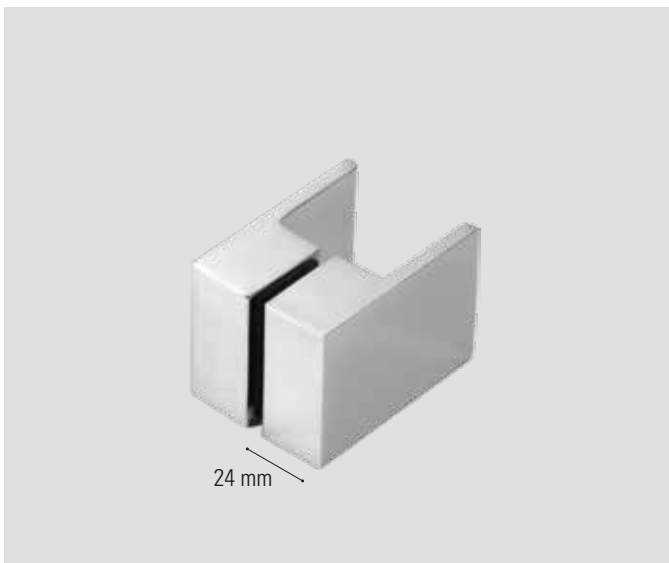
**NS**  
Nickel satinato  
Satin nickel  
Ähnlich Edelstahl matt

**CR**  
Cromo lucido  
Polished chrome  
Chrom glänzend

**CS**  
Cromo satinato  
Satin chrome  
Chrom matt

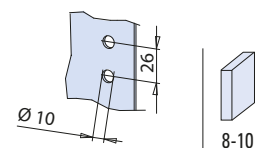
**CP**  
Cromo perla  
Chrome perla similar Alu  
Chrom perla ähnlich Alu

**NO**  
Nero opaco  
Matt black  
Schwarz matt



**B-197**

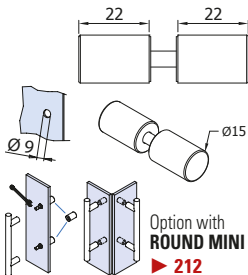
- Coppia pomoli 70 x 50 mm
  - Pair of doorknobs 70 x 50 mm
  - Paar Türknöpfe 70 x 50 mm
- CR



**B-177**

- Paio pomolini tondi d. 15
- Pair mini knobs d. 15
- Paar mini knobs d. 15

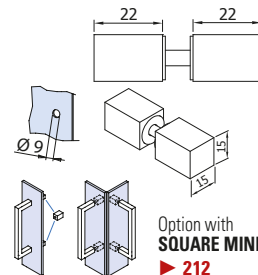
IL - IX



**B-178**

- Paio pomolini quadri q. 15
- Pair mini knobs q. 15
- Paar knöpfe mini q.15

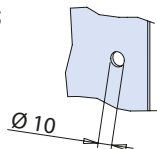
CR - NS



**B-194**

- Coppia pomoli Ø 32 mm
- Foro vetro Ø 10 mm
- Pair of doorknobs Ø 32 mm
- Hole in glass 10 mm
- Paar Türknöpfe Ø 32 mm
- Glas Bohrung 10 mm

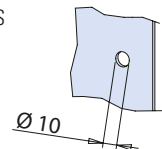
CR - NS



**B-195**

- Coppia pomoli 25x25 mm
- Foro vetro Ø 10 mm
- Pair of doorknobs 25x25 mm
- Hole in glass 10 mm
- Paar Türknöpfe 25x25 mm
- Glas Bohrung 10 mm

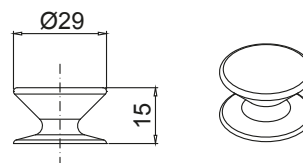
CR - NS



**B-192**

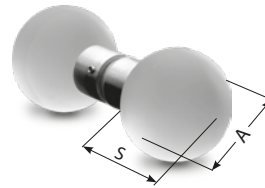
- Pomolo ad incollaggio biadesivo.
- Knob with self-adhesive fixing.
- Knopf selbstklebend.

CR

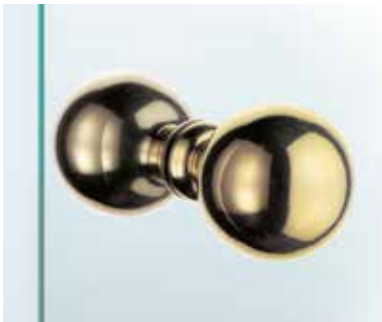
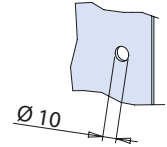



**V-019**

- Coppia pomoli in vetro.
  - Pair of door knobs in glass.
  - Paar Türknöpfe aus Glas.
- NS + GLASS



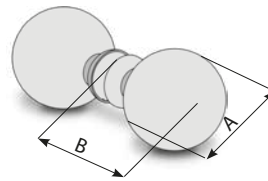
A = 40 / 45 / 50  
S = 52 / 57 / 62


**V-1056**

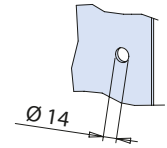
- Coppia pomoli palla Ø 60 mm.
- Pair of door knobs Ø 60 mm.
- Paar Türknöpfe Ø 60 mm.

**V-1056-2**

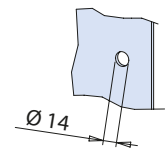
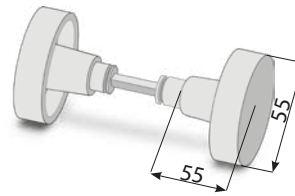
- Coppia pomoli palla Ø 50 mm.
  - Pair of door knobs Ø 50 mm.
  - Paar Türknöpfe Ø 50 mm.
- CS - NS - CR - OL - CP



Ø 60 A = 60 / B = 78  
Ø 50 A = 50 / B = 70


**V-1105**

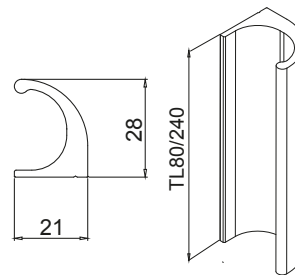
- Coppia pomoli piatti Ø 55 mm.
  - Pair of doorknobs Ø 55 mm.
  - Paar Türknöpfe Ø 55 mm.
- CS - NS - CR - OL - CP


**B-191-80 / B-191-240**

- Maniglia ad incollaggio biadesivo.
- Small handle with self-adhesive fixing.
- Kleine griffe selbstklebend.

CR

		B-191-80	B-191-240
TL	80	•	
	240		•

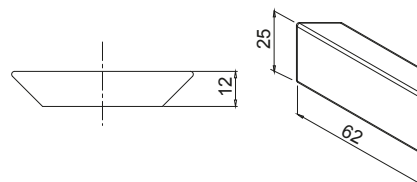


xme311


**B-193**

- Maniglia ad incollaggio biadesivo.
- Small handle with self-adhesive fixing.
- Kleine griffe selbstklebend.

CR



xme311

**NS**  
Nickel satinato  
Satin nickel  
Ähnlich Edelstahl matt

**CR**  
Cromo lucido  
Polished chrome  
Chrom glänzend

**CS**  
Cromo satinato  
Satin chrome  
Chrom matt

**OL**  
Ottone lucido  
Polished brass  
Messing poliert

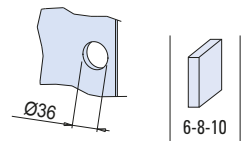
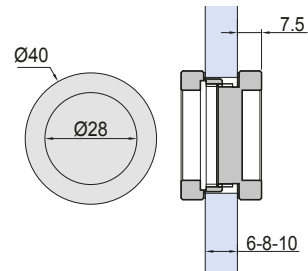
**CP**  
Cromo perla  
Chrome perla similar Alu  
Chrom perla ähnlich Alu



**V-526**

- Nicchia chiusa.
- Closed sliding-handle.
- Griffmuschel geschlossen.

AN - CR - NS - NO - OR



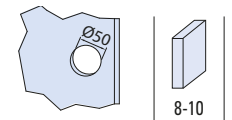
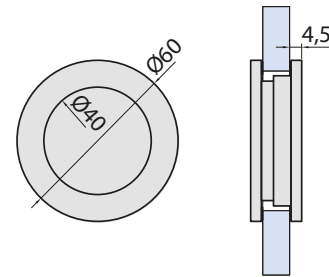
**V-524**

- Paio nicchie per scorrevole tonde, Ø 60
- Materiale: ottone

- Pair sliding door-handles, Ø 60
- Material: brass

- Paar Griffmuscheln, Ø 60
- Material: Messing

CP - NS - CR - NO



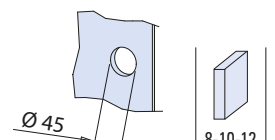
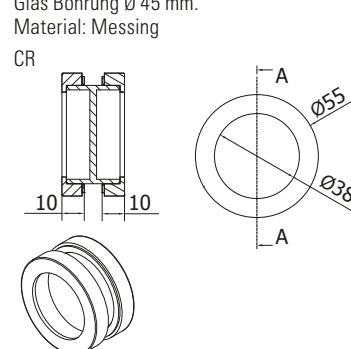
**B-170**

- Nicchia tonda Ø 55 mm per scorrevole.
- Foro nel vetro Ø 45 mm.
- Materiale: ottone

- Sliding door-handle round Ø 55 mm.
- Hole in glass Ø 45 mm.
- Material: brass

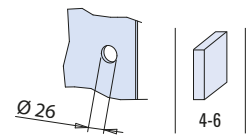
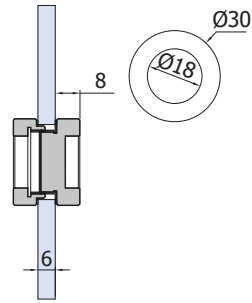
- Rund Griffmuschel Ø 55 mm.
- Glas Bohrung Ø 45 mm.
- Material: Messing

CR

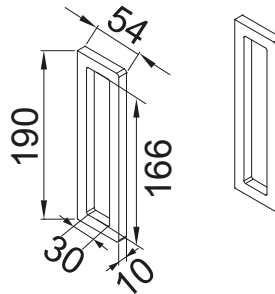



**V-528**

- Nicchia chiusa.
  - Closed sliding-handle.
  - Griffmuschel geschlossen.
- AN - CR - NS


**DIV-008**

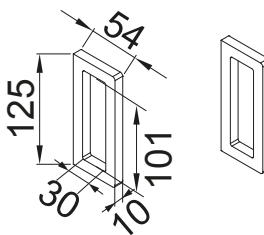
- Paio nicchie scorrevole ad incollaggio
  - Pair sliding door-handles with self-adhesive fixing
  - Paar Griffmuscheln selbstklebend
- AN - NS - NO - BI - BC - BS - CR



xme595m


**DIV-007**

- Paio nicchie scorrevole ad incollaggio
  - Pair sliding door-handles with self-adhesive fixing
  - Paar Griffmuscheln selbstklebend
- AN - NS - NO - BI - BC - BS - CR



xme595m

**NS**  
Nickel satinato  
Satin nickel  
Ähnlich Edelstahl matt

**CR**  
Cromo lucido  
Polished chrome  
Chrom glänzend

**CS**  
Cromo satinato  
Satin chrome  
Chrom matt

**OL**  
Ottone lucido  
Polished brass  
Messing poliert

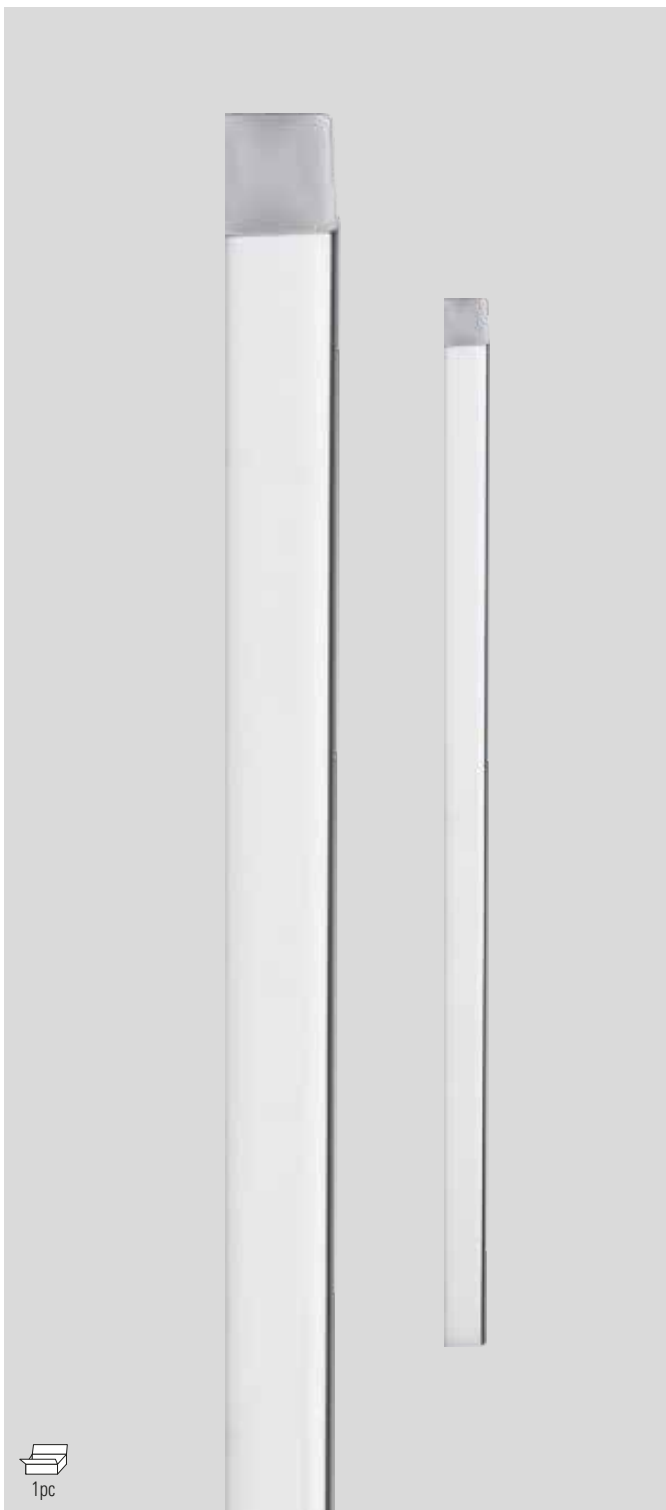
**CP**  
Cromo perla  
Chrome perla similar Alu  
Chrom perla ähnlich Alu

**AN**  
Alluminio anodizzato  
Aluminium anodized  
Aluminium Silberfarbig

**NO**  
Nero opaco  
Matt black  
Schwarz matt

# MANIGLIONI AD INCOLLAGGIO

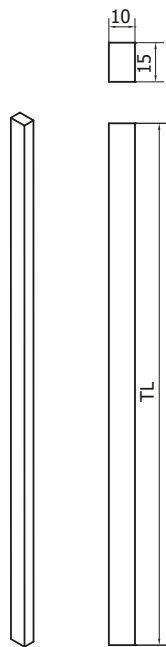
## PULLHANDLES WITH SELF-ADHESIVE / STOSSGRIFFE SELBSTKLEBEND



1pc

### SQUARE 10-INC

☑	Code	TL	Materiale Material	Unit.	Finitura Finishes Oberfläche
	10.41.81/300	300	Alluminio Aluminium	Singolo Piece Stück	AN
	10.41.51/300	300	Ottone Brass Messing	Singolo Piece Stück	CR
	10.41.61/300	300	Alluminio Aluminium	Singolo Piece Stück	AL
	10.41.71/300	300	Alluminio Aluminium	Singolo Piece Stück	NO
	10.41.81/500	500	Alluminio Aluminium	Singolo Piece Stück	AN
	10.41.51/500	500	Ottone Brass Messing	Singolo Piece Stück	CR
	10.41.61/500	500	Alluminio Aluminium	Singolo Piece Stück	AL
	10.41.71/500	500	Alluminio Aluminium	Singolo Piece Stück	NO



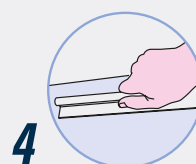
- Pulire con solvente
  - Clean with solvent
  - Mit Lösungsmittel reinigen



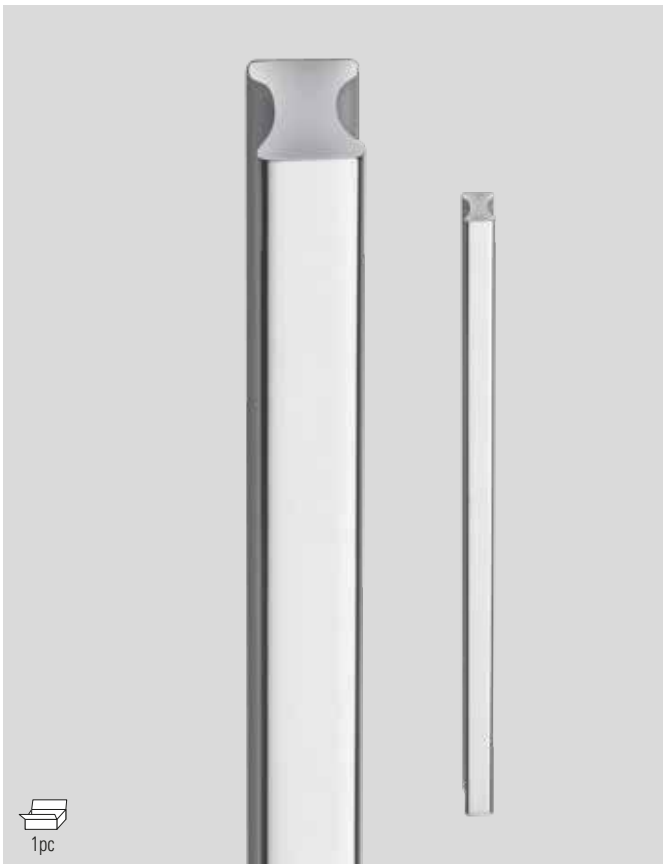
- Asciugare con un panno
  - Dry with a cloth
  - Mit einem Tuch trocknen



- Staccare la pellicola protettiva e applicare
  - Remove the protective film and apply
  - Die Schutzfolie abziehen und anbringen

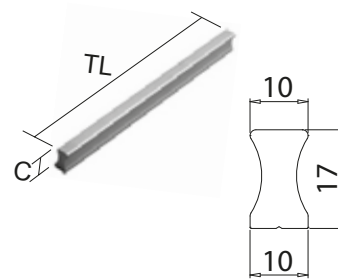


- Premere con forza
  - Press firmly
  - Fest drücken


**POR-0408 V**

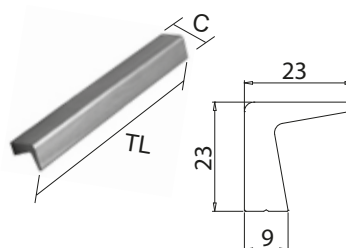
- Maniglione singolo con biadesivo
  - Pc pullhandle with self-adhesive fixing
  - Stück Stossgriff selbstklebend
- AN - XO - NS - NO - BI - AL - CR

TL	C	Unit.	Finitura Finishes Oberfläche
260	17	Singolo Piece Stück	AL - AN - CR - XO
410	17	Singolo Piece Stück	AL - AN - CR - XO
560	17	Singolo Piece Stück	AL - AN - CR - XO


**POR-0400 V**

- Maniglione singolo con biadesivo
- Pc pullhandle with self-adhesive fixing
- Stück Stossgriff selbstklebend

TL	C	Unit.	Finitura Finishes Oberfläche
240	23	Singolo Piece Stück	AL - AN - CR - NS
390	23	Singolo Piece Stück	AL - AN - CR - NS
540	23	Singolo Piece Stück	AL - AN - CR - NS



**AL**  
Alluminio lucido  
Polished aluminium  
Aluminium glänzend

**NS**  
Nickel satinato  
Satin nickel  
Ähnlich Edelstahl matt

**CR**  
Cromo lucido  
Polished chrome  
Chrom glänzend

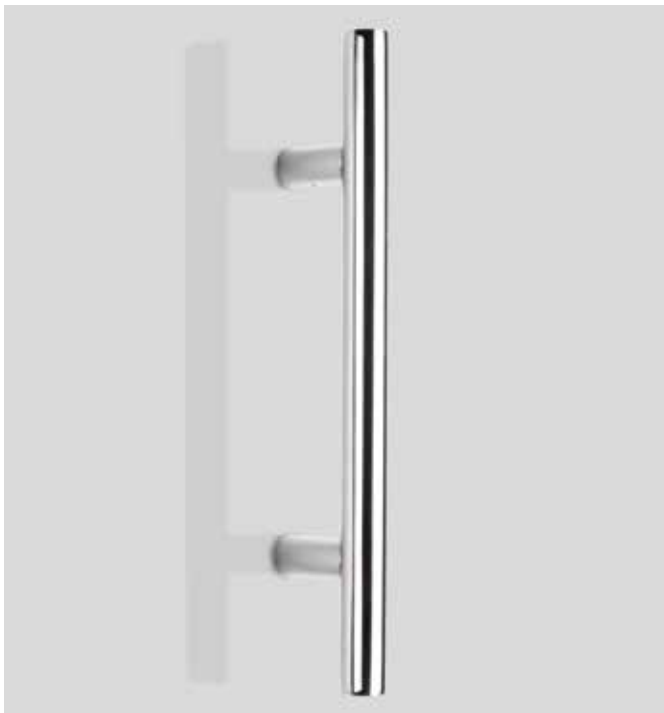
**AN**  
Alluminio anodizzato  
Aluminium anodized  
Aluminium Silberfarbig

**XO**  
Effetto inox satinato  
Inox effect  
Inox effekt

**NO**  
Nero opaco  
Matt black  
Schwarz matt

**BI**  
Bianco opaco  
Matt white  
Weiss matt

# MANIGLIONI MINI Ø 16 - Ø 15 / MANIGLIONI PULLHANDLES / STOSSGRIFFE

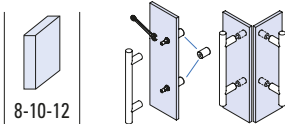
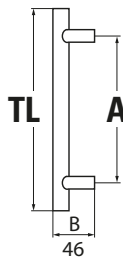


## Round Mini Ø 16

- Paio maniglioni inox
- Pair pullhandles inox
- Paar Stossgriffe inox

IX - IL

	TL	225	300	
		135		• Ø 9
A		200		• Ø 9



8-10-12

Option with Knob **B-177**  
page **206**

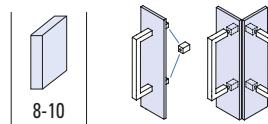
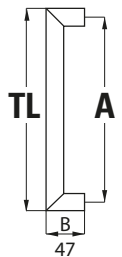


## Square Mini Ø 15

- Paio maniglioni inox
- Pair pullhandles inox
- Paar Stossgriffe inox

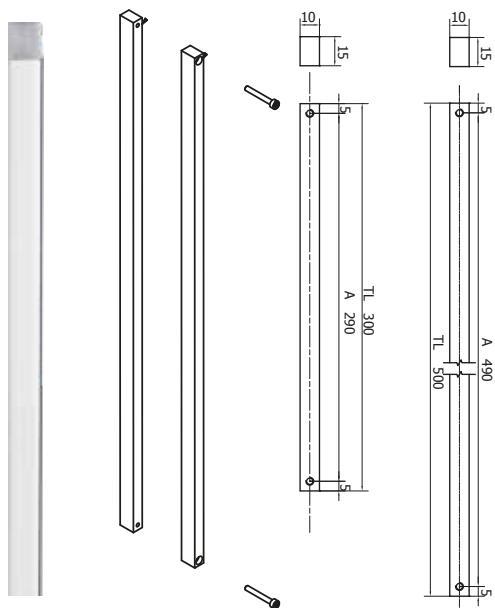
IX - IL

	TL	150	215	315	
		135			• Ø 10
A		200			• Ø 10
			300		• Ø 10



8-10

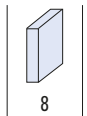
Option with Knob **B-178**  
page **206**



## SQUARE 10

- Paio maniglioni
- Pair pullhandles
- Paar Stossgriffe

AN - CR - NS



8

Ø	Code	A	TL		Materiale Material Material	Unit.	Finitura Finishes Oberfläche
10 x 15	10.41.53/290.300	290	300	8	Ottone Brass Messing	Paio Pair Paar	CR
10 x 15	10.41.63/290.300	290	300	8	Alluminio Aluminium Aluminium	Paio Pair Paar	CR
10 x 15	10.41.73/290.300	290	300	8	Alluminio Aluminium Aluminium	Paio Pair Paar	NO
10 x 15	10.41.53/490.500	490	500	8	Ottone Brass Messing	Paio Pair Paar	CR
10 x 15	10.41.63/490.500	490	500	8	Alluminio Aluminium Aluminium	Paio Pair Paar	CR

Foro vetro  
Glass hole  
Glasbohrung

**IX** Acciaio inox satinato  
Satin stainless steel  
Edelstahl matt

**IL** Acciaio inox lucido  
Polished stainless steel  
Edelstahl poliert

# MANIGLIONI $\varnothing$ 15

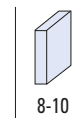
## PULLHANDLES / STOSSGRIFFE



### SQUARE $\varnothing$ 15

- Paio maniglioni. Materiale: Alluminio
  - Pair pullhandles. Material: Aluminium
  - Paar Stossgriffe. Material: Aluminium
- AN - AL - NS - NO

	TL	174	206	334	
	160	•			$\varnothing$ 10
A	192		•		$\varnothing$ 10
	320			•	$\varnothing$ 10



Foro vetro  
Glass hole  
Glasbohrung

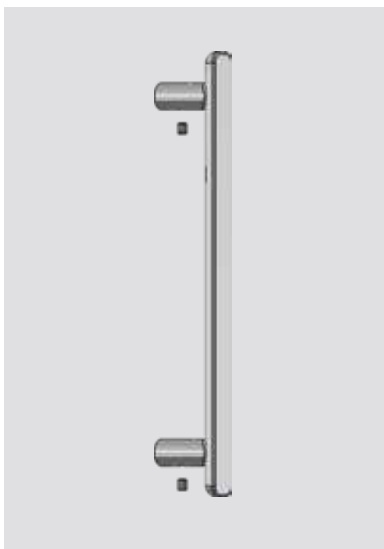
**AL**  
Alluminio lucido  
Polished aluminium  
Aluminium glänzend

**NO**  
Nero opaco  
Matt black  
Schwarz matt

**AN**  
Alluminio anodizzato  
Aluminium anodized  
Aluminium Silberfarbig

**NS**  
Nickel satinato  
Satin nickel  
Ähnlich Edelstahl matt

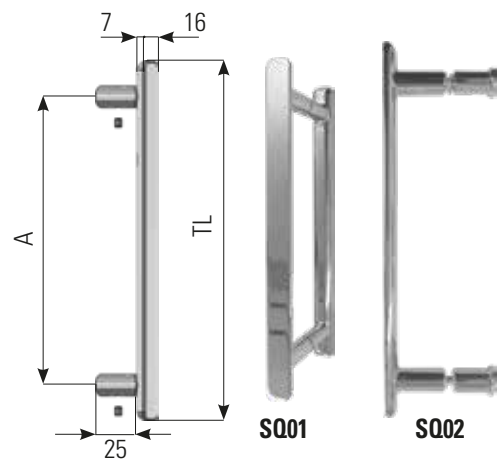
## MANIGLIONI "ZAMA" PULLHANDLES ZAMAK / STOSSGRIFFE ZAMAK



### SQ01 / SQ02

- Maniglione. Materiale: Zama
  - Pullhandle. Material: Zamak
  - Stossgriff. Material: Zamak
- CR

Code	A	TL		
SQ01	160	200	M4	Ø 6
SQ02	160	200	M4	Ø 6

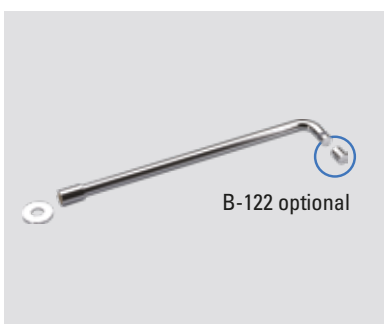
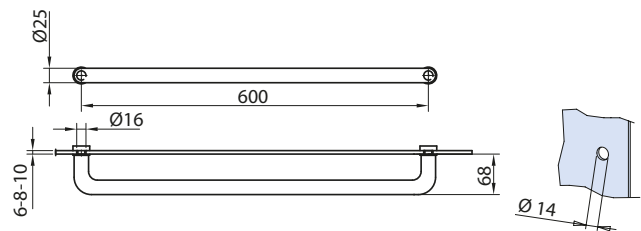


## PORTASALVIETTE TOWEL BARS / HANDTUCHHALTER



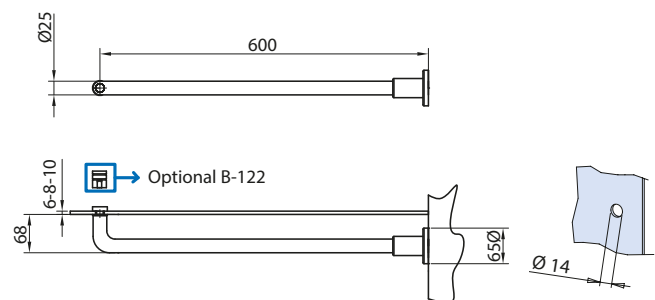
### B-120

- Portasalvietta montato a vetro L=600 mm, pomolino B-122 optional.
  - Glass mounted towel bar L=600 mm, knob B-122 optional.
  - Handtuchhalter für Glas L=600 mm, Knopf B-122 optional.
- CR



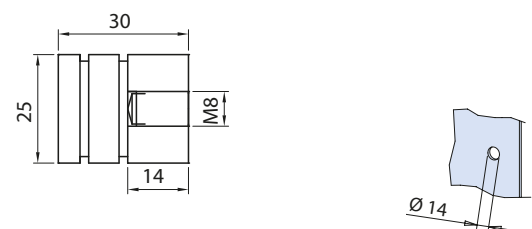
### B-121

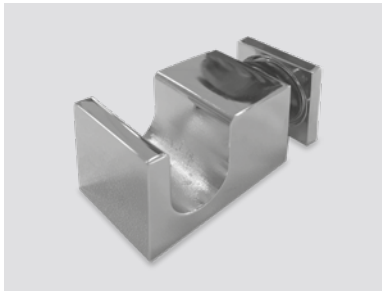
- Portasalvietta montato a vetro/muro L=600 mm, pomolino B-122 optional.
  - Glass/wall mounted towel bar L=600 mm, knob B-122 optional.
  - Handtuchhalter für Glas/Wand L=600 mm, Knopf B-122 optional.
- CR



### B-122

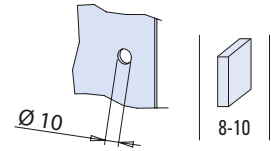
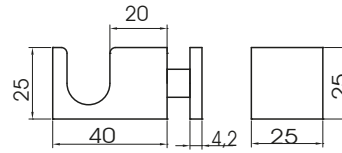
- Pomolo optional per portasalvietta.
  - Knob optional for towel bar.
  - Knopf optional für Handtuchhalter.
- CR




**B-186**

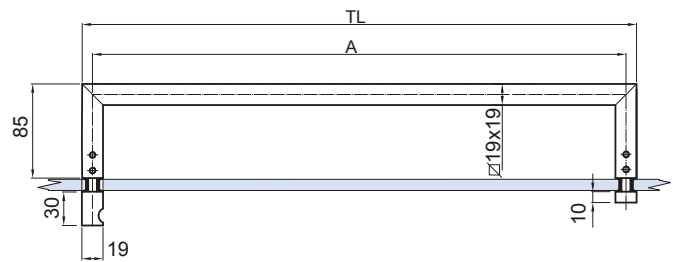
- Pomolo appendi salvietta montato a vetro.
- Knob towel bar for glass.
- Knopf Handtuchhalter, für Glas.

CR


**B-124**

- Portasalvietta montato a vetro L-469 mm pomolino incluso.
- Glass mounted towel bar L-469 mm knob included
- Handtuchhalter für Glass L-469 mm Knopf enthalten

IL - NO


**B-125**

- Portasalvietta montato a vetro L-619 mm pomolino incluso.
- Glass mounted towel bar L-619 mm knob included
- Handtuchhalter für Glass L-619 mm Knopf enthalten

IL - NO



☒	Code	A	TL		Finitura Finishes Oberfläche	Materiale Material Material
	<b>B-124</b>	450	469	<b>10</b>	IL - NO	Inox Stainless steel Edelstahl
	<b>B-125</b>	600	619	<b>10</b>	IL - NO	Inox Stainless steel Edelstahl


**PG-CHIAVE**

- Chiave regolabile.
- Installation tool adjustable.
- Handwerkzeug Verstellbar.


 Foro vetro  
Glass hole  
Glasbohrung

**IX**  
Acciaio inox satinato  
Satin stainless steel  
Edelstahl matt

**CR**  
Cromo lucido  
Polished chrome  
Chrom glänzend

**AN**  
Alluminio anodizzato  
Aluminium anodized  
Aluminium Silberfarbig

**IL**  
Acciaio inox lucido  
Polished stainless steel  
Edelstahl poliert

**NO**  
Nero opaco  
Matt black  
Schwarz matt