

V-920-CIL



SERRATURE

CERNIERE

MANIGLIE E
MANIGLIONI

PORTE
ESTERNE

V-920-CIL NO



Materiale: Alluminio
Material: Aluminium

- Serratura I-Lock altamente compatta per cilindro europeo. Maniglie, cilindri e contropiastre da ordinare a parte.
- High compacted lock for euro cylinders. Handles, cylinders and strike plates not included, to order separately.
- Hohes kompaktes Schloss für Profilzylinder. Griffe, Zylinder und Schließbleche nicht enthalten, separat zu bestellen

V-991
Maniglia / Handle / Griff

V-920-CIL NS



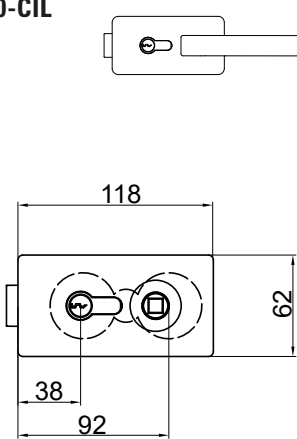
V-982
Maniglia / Handle / Griff

V-920-CIL CR

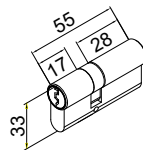


V-981
Maniglia / Handle / Griff

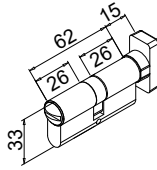
V-920-CIL



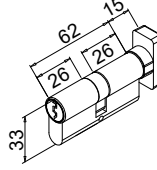
C-026



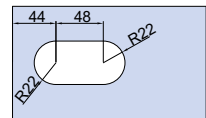
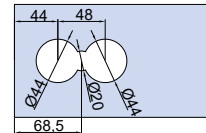
C-013



C-08-Q

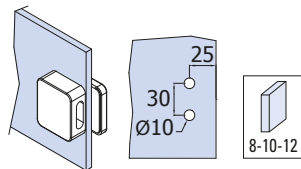


LAVORAZIONE VETRO ALTERNATIVA
ALTERNATIVE GLASS PREPARATION
ALTERNATIVE GLASBEARBEITUNG



V-900-2FLG

- Controserratura
- Strike box
- Gegenkasten



V-037



CP-017



V-931



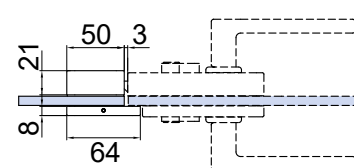
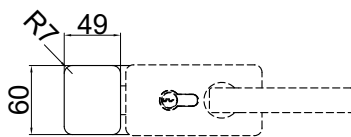
V-704



V-709



V-809



xme735

AN
Alluminio anodizzato
Aluminium anodized
Aluminium Silberfarbig

CS
Cromo satinato
Satin chrome
Chrom matt

CR
Cromo lucido
Polished chrome
Chrom glänzend

NS
Nickel satinato
Satin nickel
Ähnlich Edelstahl matt

NO
Nero opaco
Matt black
Schwarz matt