

BARRE DI SUPPORTO TONDE Ø 12 mm ROUND SUPPORT BARS Ø 12 mm / RUNDE STABILISATIONSSTANGEN Ø 12 mm

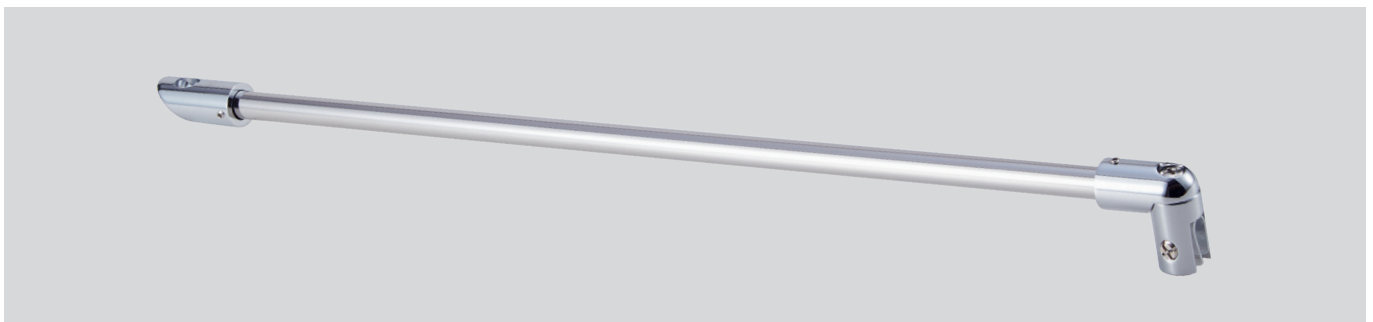
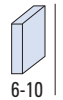
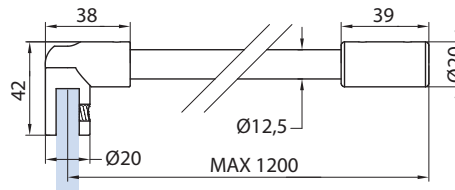
- Materiale: Ottone.
- Material: Brass.
- Material: Messing.



B-211

- Barra di fissaggio vetro/muro.
- Glass to wall fixing bar.
- Stabilisationsstange Glas/Wand.

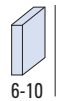
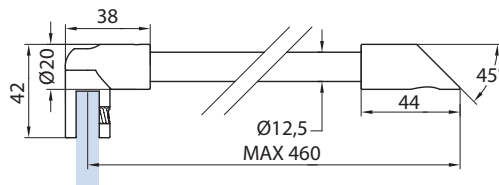
CR - NS - NO



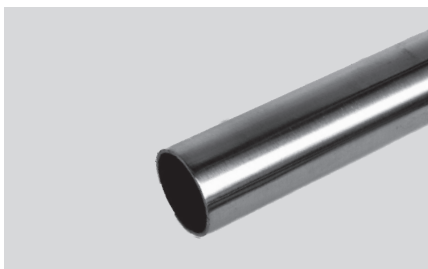
B-210

- Barra di fissaggio vetro/muro 45°.
- Glass to wall 45° fixing bar.
- Stabilisationsstange Glas-Wand 45°.

CR - NS - NO



COMPONENTI / COMPONENTS / EINZELTEILE



B-213 (L=1200 mm)

- Tubo inox Ø 12,5 mm.
- Stainless steel tube Ø 12,5 mm.
- Halterungen für Stabilisationsstange.

CR - NS - NO

B-214

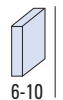
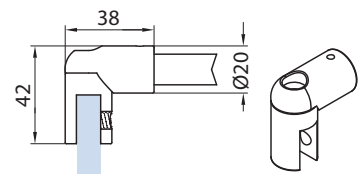
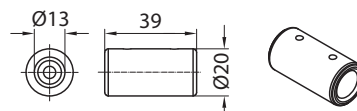
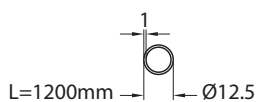
- Terminale a muro per barre fermavetro Ø 12,5 mm.
- Wall fixing bar end for Ø 12,5 mm tube.
- Drehbar Halterungen für Stabilisationsstange.

CR - NS - NO

B-215

- Attacco a vetro per tubo Ø 12,5 mm
- Glass clamp for 12,5 mm tube.
- Rohrverbinder / Glas für Rohr Ø 12,5 mm.

CR - NS - NO



CR
Cromo lucido
Polished chrome
Chrom glänzend

NS
Nickel satinato
Satin nickel
Ähnlich Edelstahl matt

NO
Nero opaco
Matt black
Schwarz matt