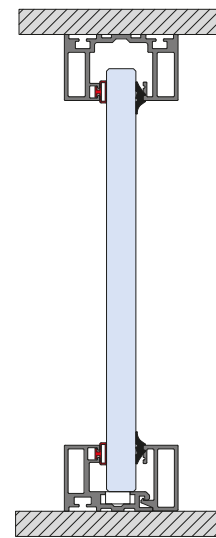
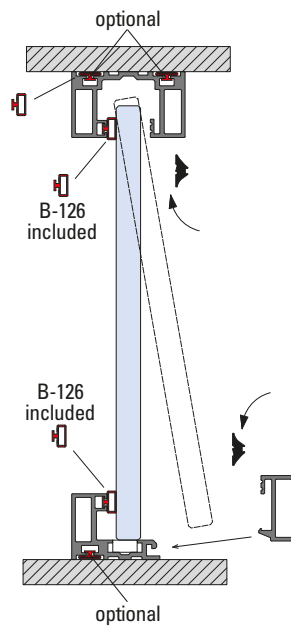
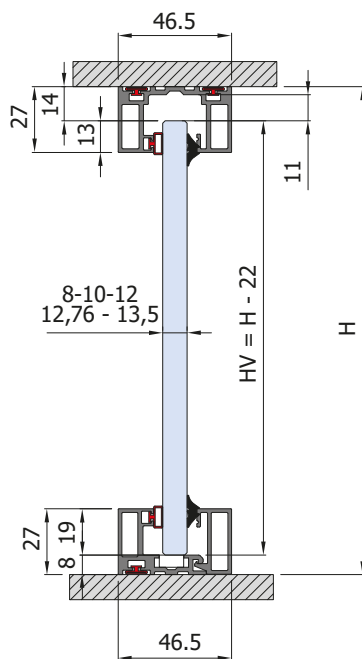
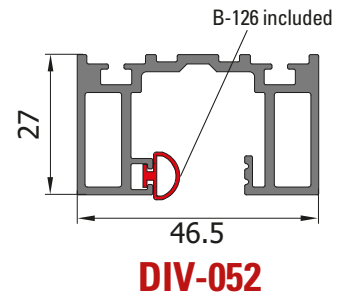
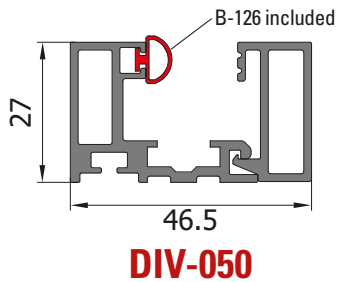
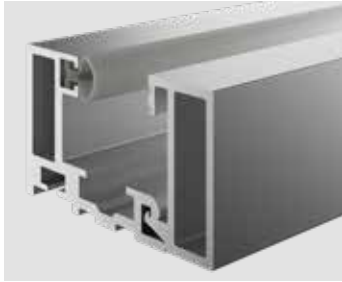


## DIV-050 / DIV-052 "APARI"

Profili a scatto per fissi  
Clip-on profiles for fixed panels  
Klipsprofile für Festverglasungen



### VP-016

- Per vetro 8 mm
- For glass 8 mm
- Für Glas 8 mm



### VP-017

- Per vetro 10 e 13,5 mm. Rimuovere B-146.
- For glass 10 and 13,5 mm. Remove B-146.
- Für Glas 10 und 13,5 mm. Entfernen Sie B-146.



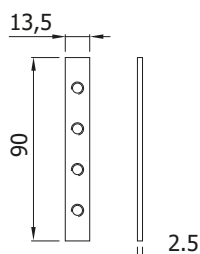
### VP-018

- Per vetro 12 / 12,76 mm
- For glass 12 / 12,76 mm
- Für Glas 12 / 12,76 mm

## Accessori / Accessories / Zubehör

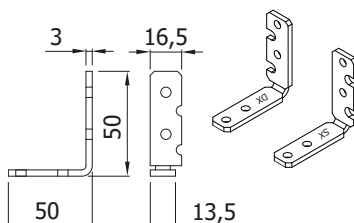
### P-F50

- Piastra di collegamento tra profili DIV-050.
- Connection plate between profiles DIV-050.
- Verbindungsplatte zwischen Profilen DIV-050.



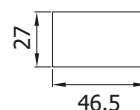
### P-F53

- Paio staffe di collegamento dx - sx stipite TP-150 e profilo DIV-050.
- Pair connection brackets right - left door jamb TP-150 and profile DIV-050.
- Paar Verbinder rechts - links Aluzarge TP-150 und Profil DIV-050.



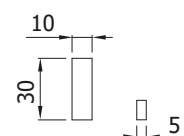
### DIV-050-TA

- Paio tappi finali
- Pair endcaps
- Paar Endkappen



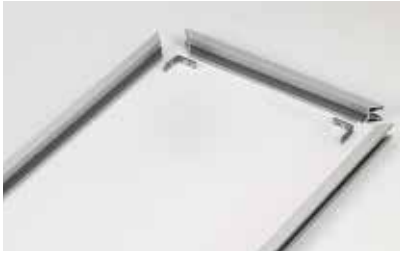
### P-F52

- Set 22 pcs piedini per appoggio vetro
- Set 22 pcs support for glass
- Set mit 22 Stück Auflage für Glas

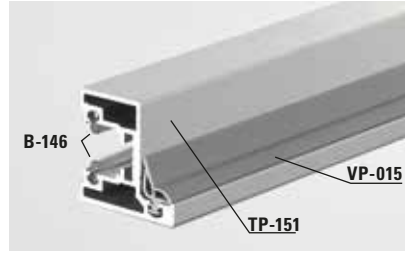


# TP-150

Stipite con spessore uguale ai profili "APARI" per una continuità estetica assoluta  
 Jamb with thickness equal to the "APARI" profiles for absolute aesthetic continuity  
 Zarge mit gleicher Dicke wie die "APARI"-Profile für absolute ästhetische Kontinuität



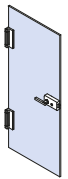
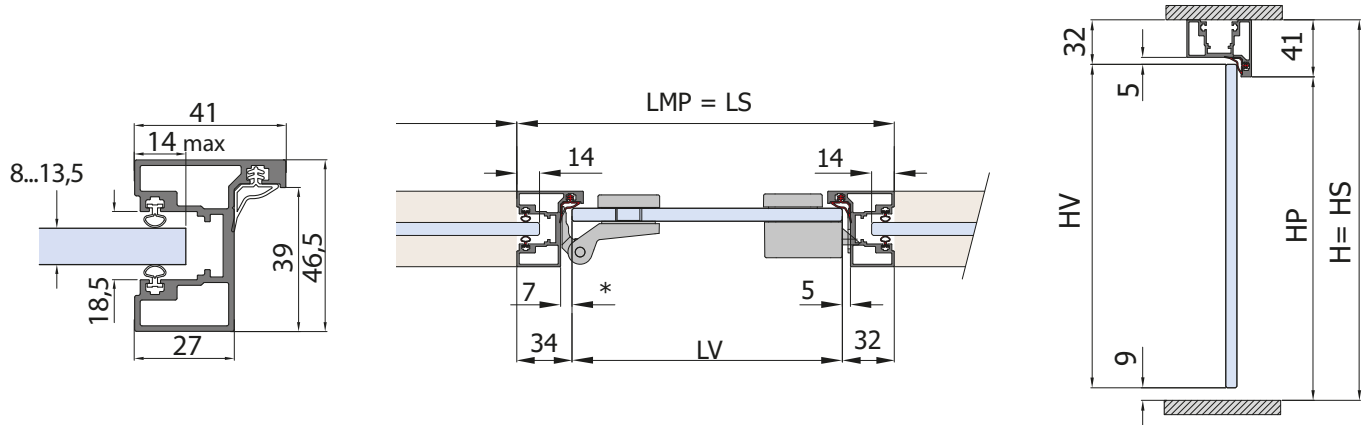
TP-150



TP-151-FIX



P-116-CF2



V-409 V-509 V-709 V-809 V-909 V-729

$$LV = LS - (34^* + 32)$$

$$HV = H - 41$$

V-701 V-704

$$LV = LS - (35^* + 32)$$

$$HV = H - 41$$

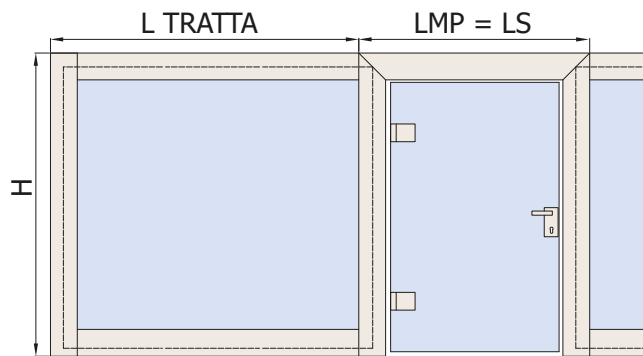


DIV-100

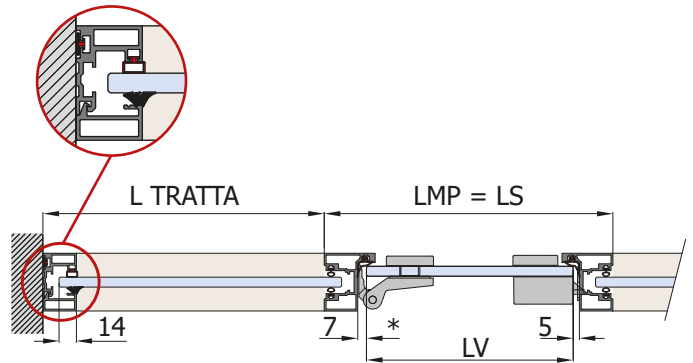
$$LA = LS - (32^* + 32)$$

$$HA = H - 41$$

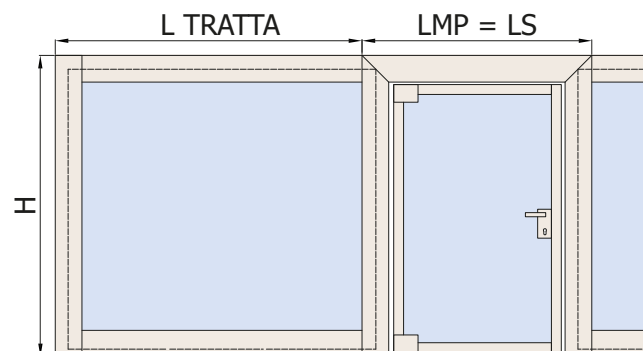
## Anta tutto vetro / Frameless panel / Ganzglas Tür



## DIV-050



## Anta intelaiata / Framed panel / Gerahmte Tür



## DIV-050

