

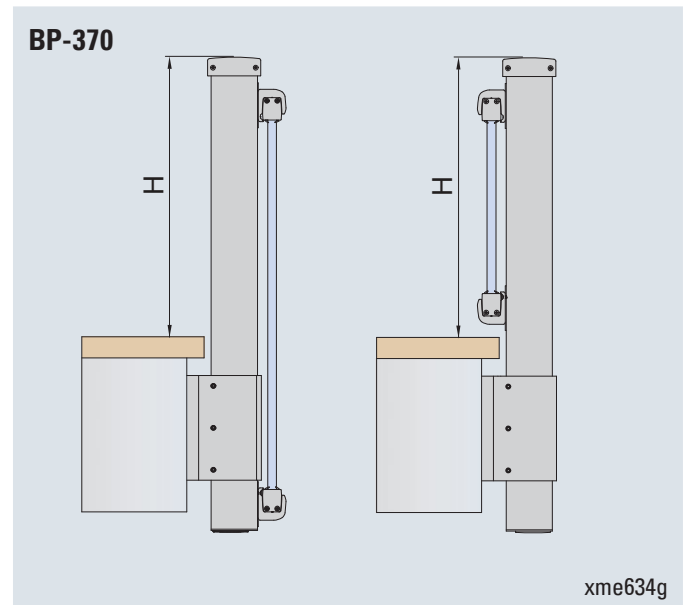
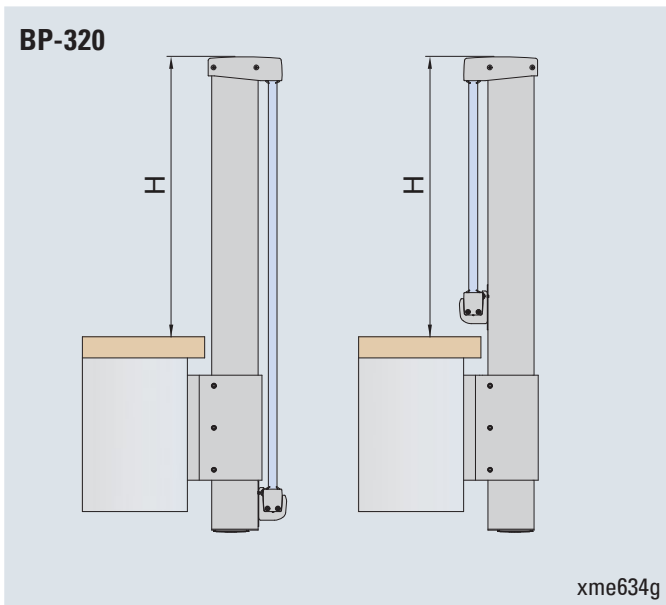
**1** **FORTE**  
**STRONG / STARK**



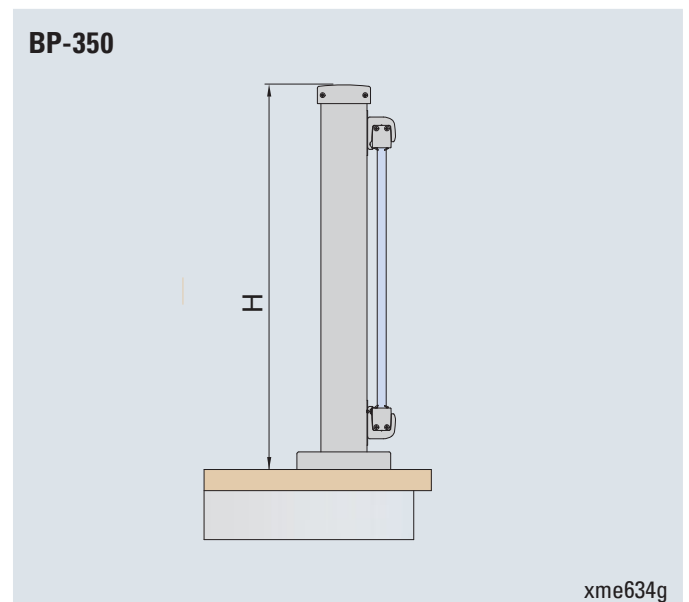
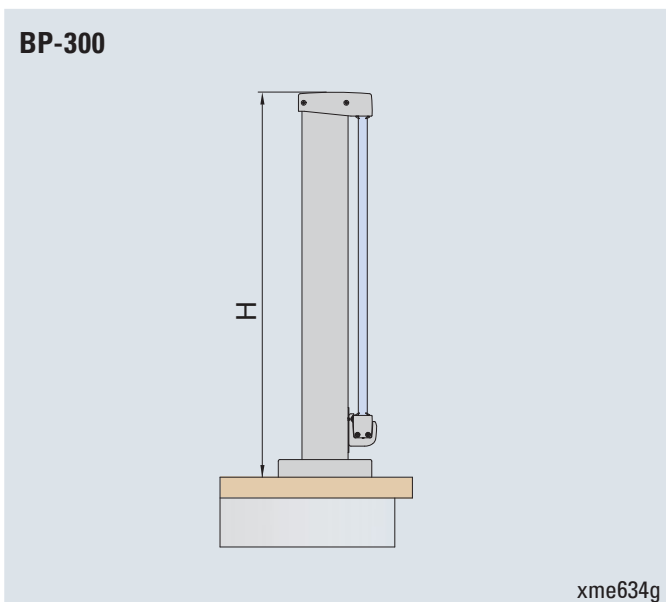
UNIVERSITÀ DEGLI STUDI DI BRESCIA  
DICATAM DIPARTIMENTO DI INGEGNERIA CIVILE, ARCHITETTURA,  
TERRITORIO, AMBIENTE E DI MATEMATICA  
LABORATORIO PROVE MATERIALI «PIETRO PISA»

**UNI11678:2017**

SET	Vetro mm Glass mm Glas mm	L	H da piano calpestio above floor level ab begehbarer Fläche	Testato spinta Test side force Getestete Seitenkraft	Classe Class ITA Klasse ITA	UNI11678:2017
BP-320 / BP-370	6+6+0,76 pvb	1400 mm	1200 mm	150 Kg	1	1 kN/m = 100kg/m
	6+6+0,76 pvb	1400 mm	1200 mm	300 Kg	2	2 kN/m = 200kg/m



SET	Vetro mm Glass mm Glas mm	L	H da piano calpestio above floor level ab begehbarer Fläche	Testato spinta Test side force Getestete Seitenkraft	Classe Class ITA Klasse ITA	UNI11678:2017
BP-300 / BP-350	6+6+0,76 pvb	1500 mm	1200 mm	150 Kg	1	1 kN/m = 100kg/m
	6+6+0,76 pvb	1500 mm	1200 mm	300 Kg	2	2 kN/m = 200kg/m



STRIPE



**Fissaggio a pavimento tramite staffa con saetta in acciaio che ha superato le prove di spinta senza difficoltà.**

**Facilità di montaggio staffa al profilo palo (a cura del cliente).**

*Fixing to the floor by a reinforced steel bracket, which passed loading tests without difficulty. Easy assembly to the post profile (by the customer).*

*Befestigung am Boden mittels einer verstärkten Halterung, die die Belastungstests problemlos bestanden hat.*

*Einfache Montage der Halterung am Pfostenprofil (bauseitig).*

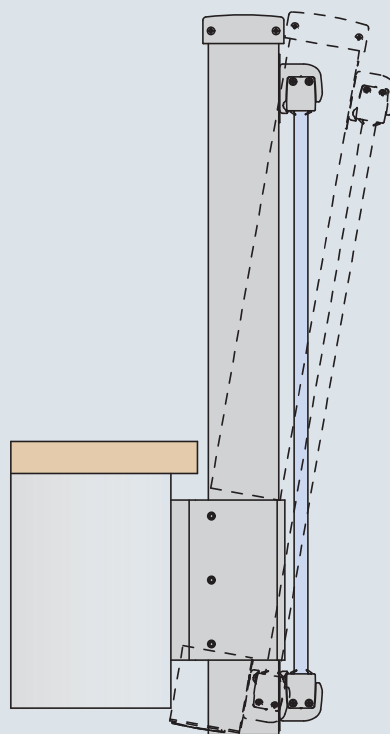
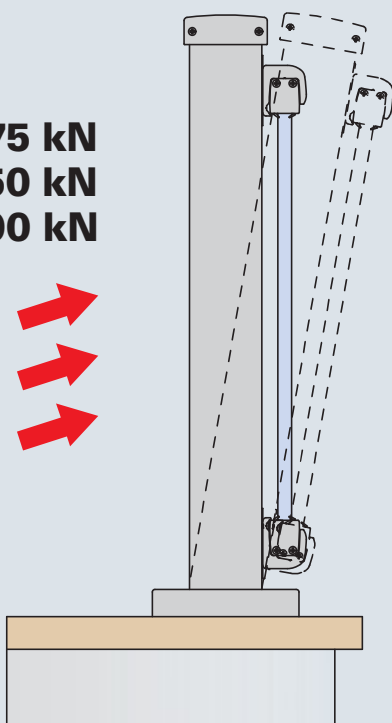


**Norma UNI 11676 max flessione 100 mm**

**UNI 11676 Norm max deflection 100 mm**

**UNI 11676 max 100 mm Durchbiegung**

**75 kN  
150 kN  
300 kN**



STRIPE

## FISSAGGIO STAFFA A PAVIMENTO

FLOOR BRACKET INSTALLATION

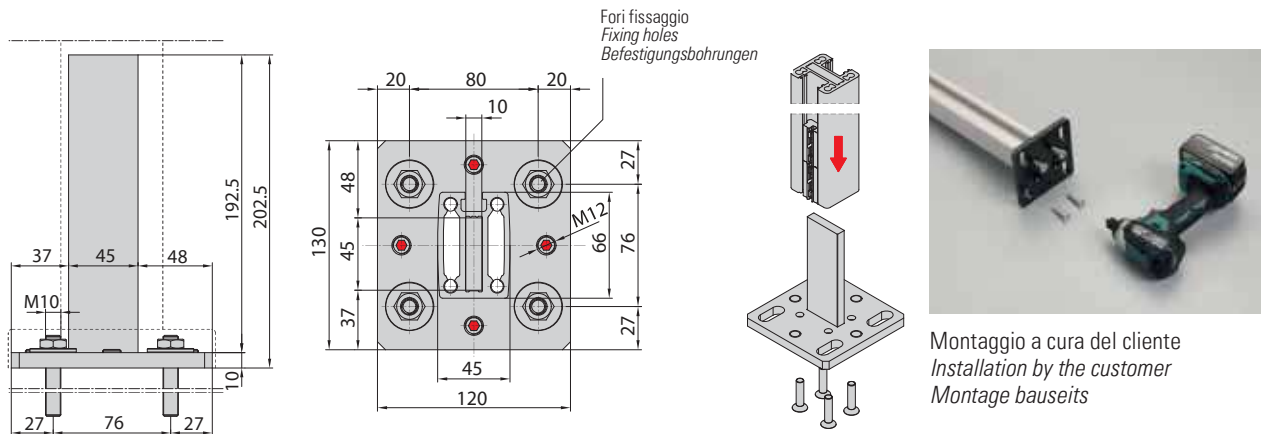
BEFESTIGUNG DER BODENHALTERUNG

**A**

Facilità di montaggio saetta al profilo palo (a cura del cliente) tramite viti.

Easy assembly (by the customer) of the reinforced steel bracket to the post profile by means of screws.

Einfache bauseitige Montage der verstärkten Halterung am Pfostenprofil mittels Schrauben.



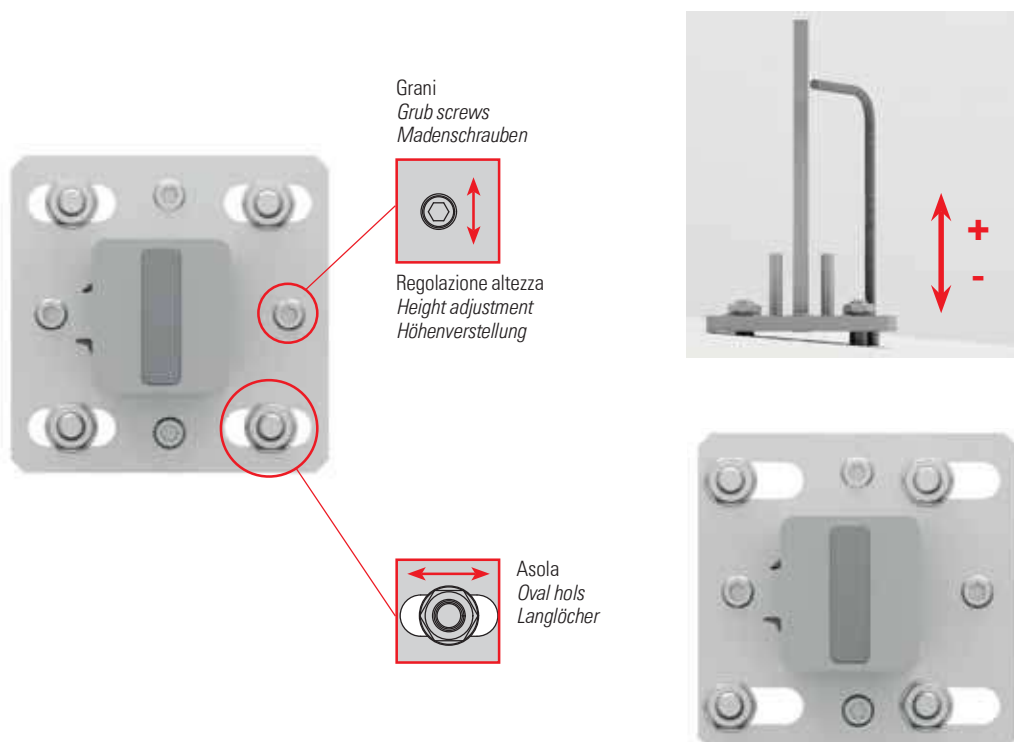
Montaggio a cura del cliente  
Installation by the customer  
Montage bauseits

**B**

Grazie alle asole e ai grani è possibile regolare la distanza e l'altezza dei pali.

Easy adjustment of the the distance and height of the posts thanks to the oval holes and the grub screws.

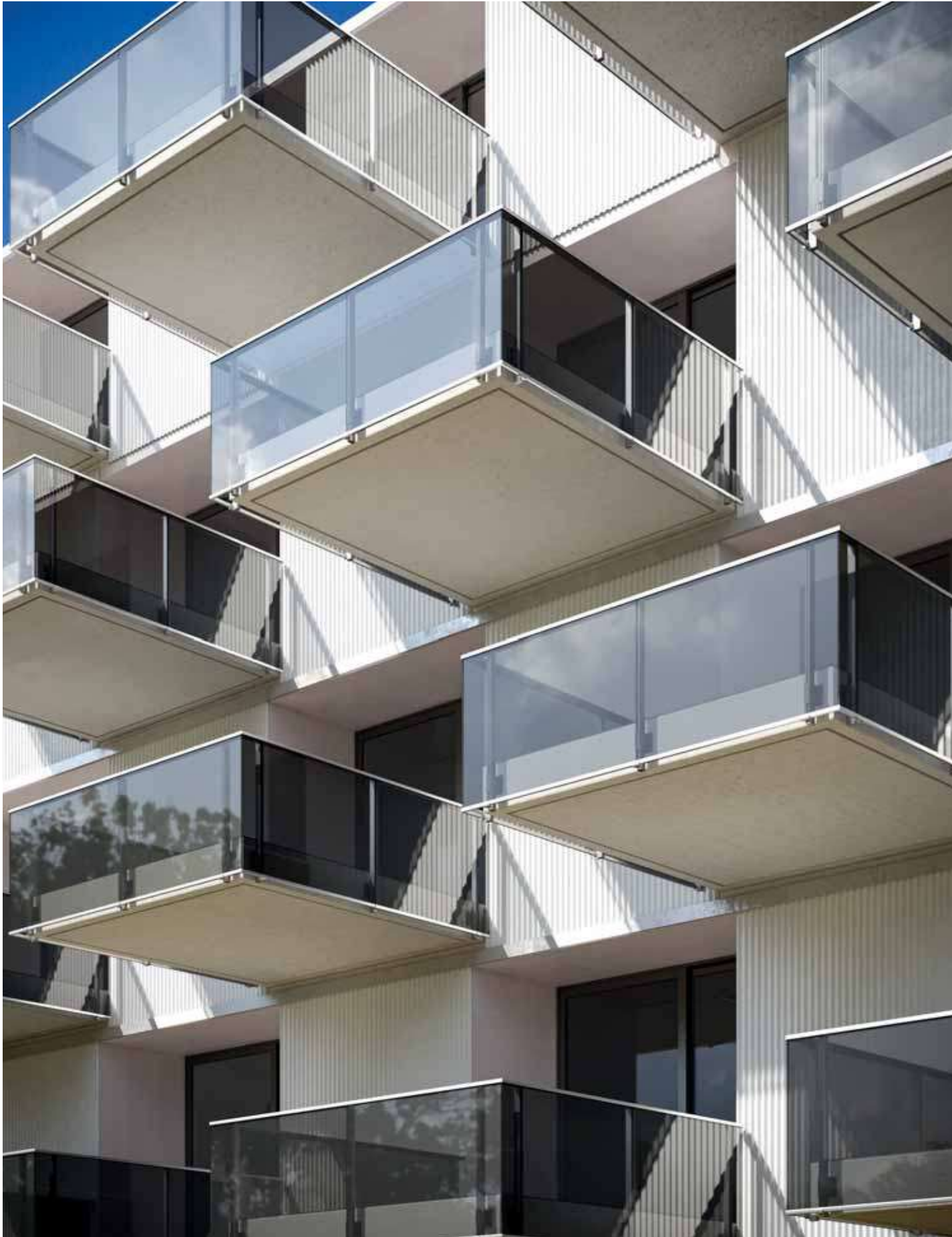
Einfache Verstellung von Abstand und Höhe der Pfosten durch Langlöcher und Madenschrauben.



STRIPE

# STRIPE COLORI

STRIPE COLORS  
STRIPE OBERFLÄCHEN



STRIPE



STRIPE



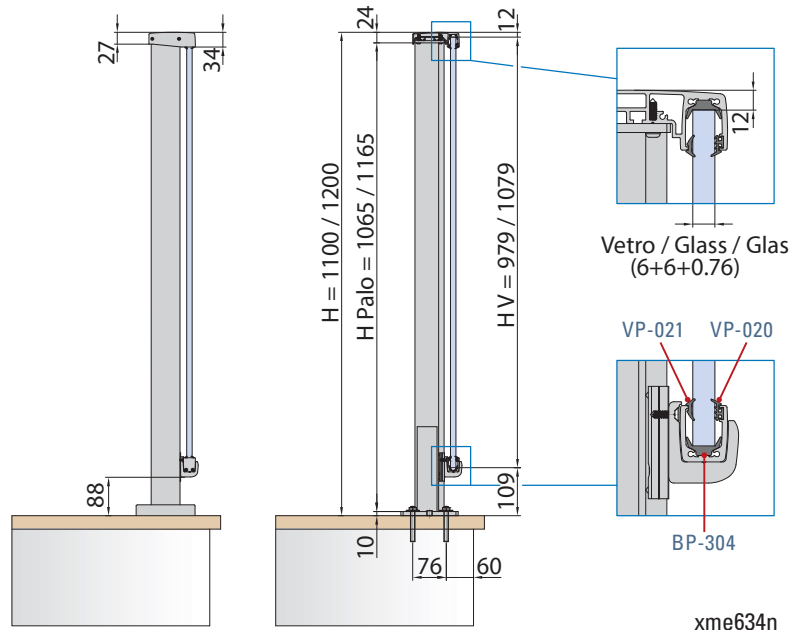
Colore standard consegna veloce: AN alluminio anodizzato argento  
*Standard color quick delivery: AN silver anodized aluminum*  
*Standard Oberfläche schnelle Lieferung: AN silberfarbiges eloxiertes Aluminium*



Altri colori a richiesta  
*Other colors on request*  
*Andere Oberflächen auf Anfrage*

## BP-300

VERSIONE PER VETRO INTEGRATO NEL CORRIMANO, FISSAGGIO A PAVIMENTO  
VERSION FOR GLASS INTEGRATED IN THE HANDRAIL, FLOOR INSTALLATION  
AUSFÜHRUNG FÜR GLAS IM HANDLAUF INTEGRIERT, BODENMONTAGE



Set palo, fissaggio a pavimento. H=1100 mm/1200 mm.  
Per vetro 6+6+0.76. Profili corrimano e fermavetro non inclusi.  
Set floor installation post. H=1100 mm/1200 mm.  
For glass 6+6+0.76. Handrails and glass stop profiles not included.  
Set Pfosten, Bodenmontage. H=1100 mm/1200 mm.  
Für Glas 6+6+0.76. Handlauf und Glasleiste Profile nicht enthalten.

HV = H - 121

H Palo = H - 121

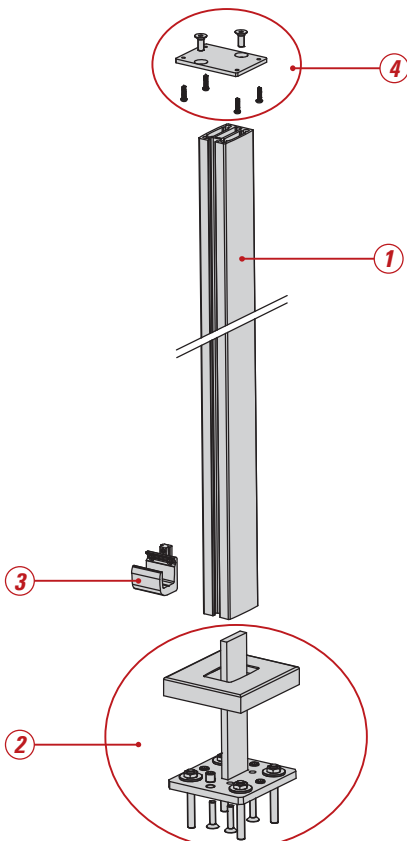
HV = Altezza vetro / Glass height / Glashöhe  
H Palo = Altezza palo / Post height / Pfostenhöhe

xme634n

### PAGINE TECNICHE / TECHNICAL PAGES / TECHNISCHE SEITEN ▶ 84

### COMPONENTI / COMPONENTS / EINZELTEILE ▶ 86-87

STRIPE



**1** BP-310  
Profilo palo H = 1065 / 1165 mm  
Post profile H = 1065 / 1165 mm  
Pfostenprofil H = 1065 / 1165 mm

**2** BP-305  
Staffa a pavimento regolabile  
compresa di coperture  
Adjustable floor bracket,  
cover plates included  
Verstellbare Bodenhalterung,  
inklusive Abdeckplatten.

**3** BP-306  
Morsetto di sostegno  
per profilo fermavetro  
Connection clamp for glass stop profile  
Klemmverbinder für Glasleiste Profil

**4** BP-307  
Piastra di connessione palo/corrimano  
Post/handrail connection plate  
Verbindungsplatte Pfosten/Handlauf

BP-304  
Guarnizione appoggio vetro  
Support glass gasket  
Dichtung für Glas

VP-020  
Guarnizione 7 mm  
Gasket 7 mm  
Dichtung 7 mm

VP-021  
Guarnizione 5 mm  
Gasket 5 mm  
Dichtung 5 mm

### NON INCLUSI NEL SET / NOT INCLUDED IN SET / NICHT IM SET ENTHALTEN

**BP-301**  
Profilo corrimano escluse guarnizioni  
Handrail profile, gaskets not included  
Handlauf Profil, Dichtungen nicht enthalten  
L = 3000 / L = 6000

**BP-303**  
Profilo fermavetro, escluse guarnizioni  
Glass stop profile, gaskets not included  
Glasleiste Profil, inklusive Dichtungen  
L = 3000 / L = 6000

xme634b/d/e

# COMPONENTI

## COMPONENTS

### EINZELTEILE

	<p><b>BP-300</b> Set palo compreso di staffa con saetta in acciaio, fissaggio a pavimento, morsetto vetro, tappi e guarnizioni. <i>Set post for floor installation, reinforced steel bracket, glass clamp, endcaps and gasket included.</i> <i>Set Pfosten, Bodenmontage, inklusive verstärkten Halterung, Glasklemme, Endkappe und Dichtungen.</i></p> <p>H = 1100 mm / 1200 mm</p> <p style="text-align: right;">xme634b</p>		<p><b>BP-320</b> Palo compreso di staffa con saetta in acciaio, fissaggio laterale, morsetto vetro, tappi e guarnizioni. <i>Set post for side installation, reinforced steel bracket, glass clamp endcaps and gaskets included.</i> <i>Set Pfosten, Seitenmontage, inklusive verstärkten Halterung, Glasklemme, Endkappen und Dichtungen.</i></p> <p>H = 1100 mm / 1200 mm</p> <p style="text-align: right;">xme634c</p>
	<p><b>BP-350</b> Palo compreso di staffa con saetta in acciaio, fissaggio a pavimento, morsetto vetro, tappi e guarnizioni. Versione per corrimano indipendente. <i>Set post for floor installation, reinforced steel bracket, glass clamp, endcaps and gasket included.</i> <i>Version for independent handrail.</i> <i>Set Pfosten, Bodenmontage, inklusive verstärkten Halterung, Glasklemme, Endkappe und Dichtungen.</i> <i>Ausführung für separaten Handlauf.</i></p> <p>H = 1100 mm / 1200 mm</p> <p style="text-align: right;">xme634a</p>		<p><b>BP-370</b> Palo compreso di staffa con saetta in acciaio, fissaggio laterale, morsetto vetro, tappi e guarnizioni. Versione per corrimano indipendente. <i>Set post for side installation, reinforced steel bracket, glass clamp endcaps and gaskets included.</i> <i>Version for independent handrail.</i> <i>Set Pfosten, Seitenmontage, inklusive verstärkten Halterung, Glasklemme, Endkappen und Dichtungen.</i> <i>Ausführung für separaten Handlauf.</i></p> <p>H = 1100 mm / 1200 mm</p> <p style="text-align: right;">xme634a</p>
	<p><b>BP-351</b> Corrimano per pali BP-350 / BP-370. Versione per corrimano indipendente. <i>Handrail for posts BP-350 / BP-370.</i> <i>Version for independent handrail.</i> <i>Handlauf für Pfosten BP-350 / BP-370.</i> <i>Ausführung für separaten Handlauf.</i></p> <p>L = 3000 / 6000 mm</p> <p style="text-align: right;">xme634d</p>		<p><b>BP-301</b> Corrimano per pali BP-300 / BP-320. <i>Handrail for posts BP-300 / BP-320.</i> <i>Handlauf für Pfosten BP-300 / BP-320.</i></p> <p>L = 3000 / 6000</p> <p style="text-align: right;">xme634d</p>
	<p><b>BP-303</b> Profilo fermavetro, escluse guarnizioni. <i>Glas stop profile, gaskets not included.</i> <i>Glasleiste Profil, Dichtungen nicht enthalten</i></p> <p>L = 3000 / 6000 mm</p> <p style="text-align: right;">xme634d</p>		<p><b>BP-310</b> Profilo palo. <i>Post profile.</i> <i>Pfostenprofil.</i></p> <p>H = 1065 / 1165 / 1350 / 1450 mm</p> <p style="text-align: right;">xme634d</p>
	<p><b>BP-304</b> Guarnizione appoggio vetro. <i>Support glass gasket.</i> <i>Dichtung für Glas.</i></p> <p style="text-align: right;">xme634e</p>		<p><b>VP-020</b> Guarnizione 7 mm. <i>Gasket 7 mm.</i> <i>Dichtung 7 mm.</i></p> <p style="text-align: right;">xme634e</p>

STRIPE