

PUNTI DI FISSAGGIO POINT HOLDERS / PUNKTHALTERUNGEN



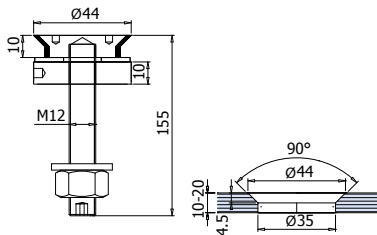
DS-045-10 / DP-045-10

- Punti di fissaggio Ø 44 mm.
- Point holder Ø 44 mm.
- Punkthalter Ø 44 mm.

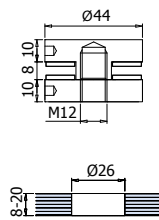
IX

e▶ 1.67

DS-045-10



DP-045-10



xme233-C



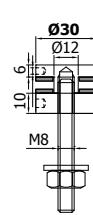
DP-030-10 / DS-030-10 DSV-030-10

- Punto di fissaggio Ø 30 mm.
- Point fixings Ø 30 mm.
- Punkthalter Ø 30 mm.

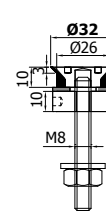
IX

e▶ 1.69

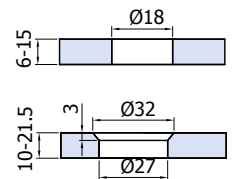
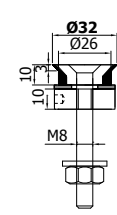
DP-030-10



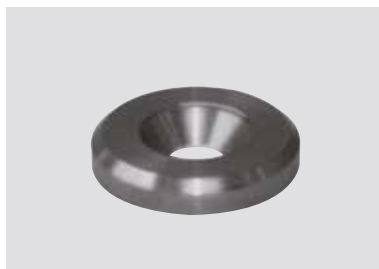
DS-030-10



DSV-030-10



xme233-N

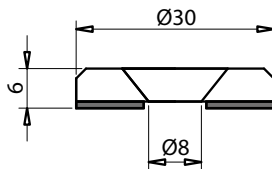


TA-020

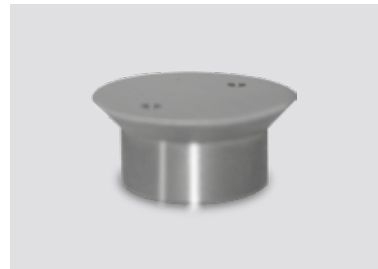
e▶ 1.70

- Tappo di fissaggio in acciaio inox con guarnizione in nylon nera, Ø 30 x 6 mm h.
- per vite a testa svasata M8 - foro nel vetro Ø 15 mm.
- Point holder in stainless steel with gasket, Ø 30 mm x H 6 mm, for screw M8, glass hole 15 mm.
- Punkthalter aus Edelstahl matt mit Gummi, Ø 30 mm x H 6 mm, für Schraube M8, Glasbohrung 15 mm.

IX



xme002

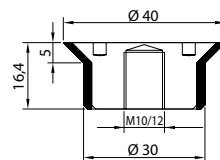


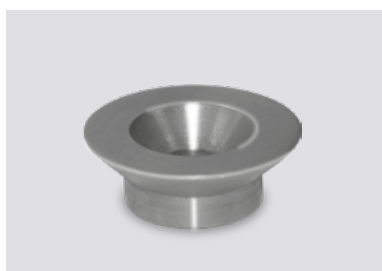
TA-011/10MA TA-011/12MA

e▶ 1.71

- Tappo di fissaggio in acciaio inox con guarnizione in nylon nera da Ø 4 x 16,4 h.
- con filetto interno M10 o M12 - foro nel vetro Ø 31/31,5 - svasatura 45° profonda 5 mm.
- Point holder in stainless steel with gasket, Ø 40 mm x H 16,4 mm, thread M10 or M12, glass hole 31 – 31,5 mm with countersunk 5x45°.
- Punkthalter aus Edelstahl matt mit Gummi, Ø 40 mm x H 16,4 mm, Gewinde M10 od. M12 Glasbohrung 31 – 31,5 mm mit Senkung 5x45°.

IX

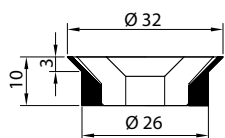




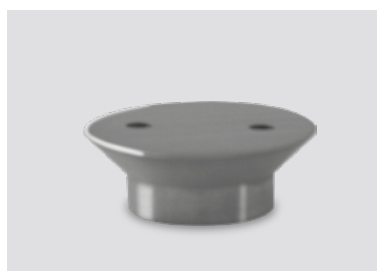
TA-012

e▶ 1.72

- Tappo di fissaggio in acciaio inox con guarnizione in nylon nera Ø 32 x 19 h.
- per vite a testa svasata M8
- foro nel vetro Ø 26,5/27 mm.
- svasatura 45° profonda 3 mm.
- Point holder in stainless steel with gasket, Ø 32 mm x H 10 mm, for screw M8, glass hole 26,5 – 27 mm with countersunk 3 x 45°.
- Punkthalter aus Edelstahl matt mit Gummi, Ø 32 mm x H 10 mm, für Schraube M8 Glasbohrung 26,5 – 27 mm mit Senkung 3 x 45°.



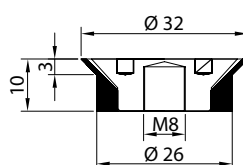
IX



TA-013

e▶ 1.73

- Tappo di fissaggio in acciaio inox con guarnizione in nylon nera Ø 32 x 10 mm h.
- con filetto interno M8
- foro nel vetro Ø 26,5/27 mm.
- svasatura 45° profonda 3 mm.
- Point holder in stainless steel with gasket, Ø 32 mm x H 10 mm, thread M8, glass hole 26,5 – 27 mm with countersunk 3 x 45°.
- Punkthalter aus Edelstahl matt mit Gummi, Ø 32 mm x H 10 mm, Gewinde M8 Glasbohrung 26,5 – 27 mm mit Senkung 3 x 45°.



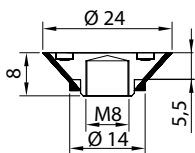
IX



TA-014

e▶ 1.74

- Tappo di fissaggio in acciaio inox con guarnizione in nylon nera Ø 24 x 8 mm h.
- con filetto interno M8
- foro nel vetro Ø 14,5/15 mm.
- svasatura 45° profonda 5,5 mm.
- Point holder in stainless steel with gasket, Ø 24 mm x H 8 mm, thread M8, glass hole 14,5 – 15 mm with countersunk 5,5 x 45°.
- Punkthalter aus Edelstahl matt mit Gummi, Ø 24 mm x H 8 mm, Gewinde M8 Glasbohrung 14,5 – 15 mm mit Senkung 5,5 x 45°.



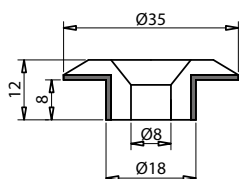
IX



TA-017

e▶ 1.77

- Tappo di fissaggio in acciaio inox con guarnizione in nylon nera, Ø 35 x 12 mm h.
- con filetto interno M8
- foro nel vetro Ø 22 mm.
- Point holder in stainless steel with gasket, Ø 35 mm x H 12 mm, thread M8, glass hole 22 mm.
- Punkthalter aus Edelstahl matt mit Gummi, Ø 35 mm x H 12 mm, Gewinde M8 Glasbohrung 22 mm.



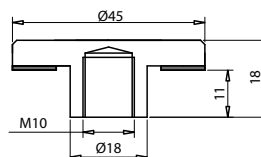
IX



**TA-018/10MA
TA-018/12MA**

e▶ 1.78

- Tappo di fissaggio in acciaio inox con guarnizione in nylon nera, Ø 45 x 18 mm h.
- con filetto interno M10 o M12
- foro nel vetro Ø 22 mm.
- Point holder in stainless steel with gasket, Ø 45 mm x H 18 mm, thread M10 or M12, glass hole 22 mm.
- Punkthalter aus Edelstahl matt mit Gummi, Ø 45 mm x H 18 mm, Gewinde M10, Glasbohrung 22 mm.



IX

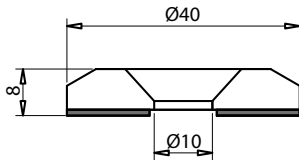


TA-019

e▶ 1.79

- Tappo di fissaggio in acciaio inox con guarnizione in nylon nera, Ø 40 x 8 mm h.
- per vite a testa svasata M10
- foro nel vetro Ø 15 mm.
- Point holder in stainless steel with gasket, Ø 40 mm x H 8 mm, for screw M10, glass hole 15 mm.
- Punkthalter aus Edelstahl matt mit Gummi, Ø 40 mm x H 8 mm, für Schraube M10, Glasbohrung 15 mm.

IX



xme002

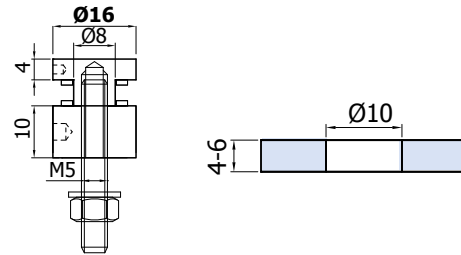


DP-016-10

e▶ 1.80

- Punto di fissaggio con tappo piano Ø 16 mm.
- Point fixings Ø 16 mm.
- Punkthalter Ø 16 mm.

IX



xme233-D

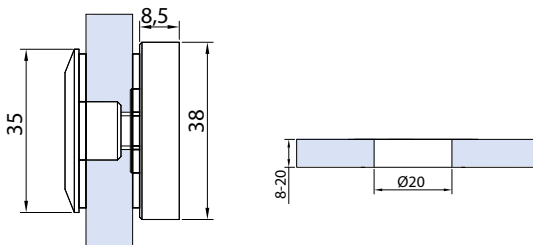


PG-20

e▶ 1.82

- Fissaggio a punto Ø 35 mm. Regolabile.
- Point fixing Ø 35 mm, adjustable.
- Punkthalter Ø 35 mm, verstellbar.

IX



xme004bis

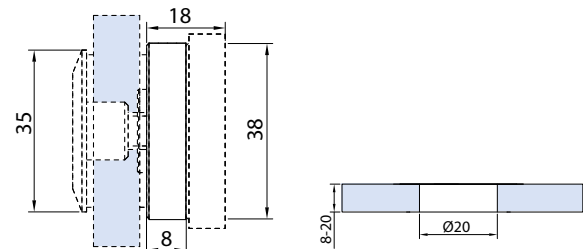


PG-21

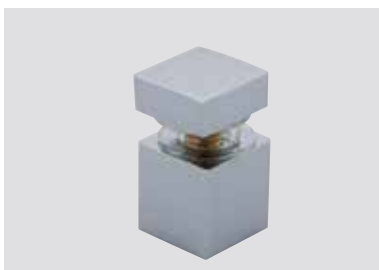
e▶ 1.83

- Distanziatore multipla da 8 mm per PG-20.
- Distance rings 8 mm for PG-20.
- Distanzhalter 8 mm für PG-20.

IX



xme044bis

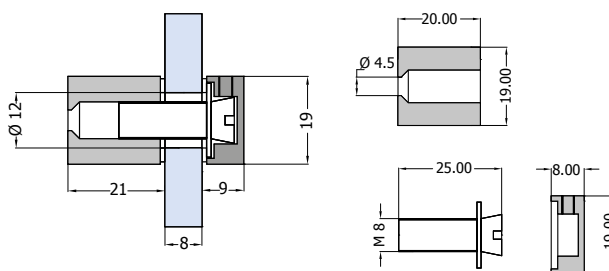


V-058

e▶ 1.85

- Punto di fissaggio quadro 19 x 19 mm - cromo lucido.
- Square fixing point 19 x 19 mm - polished chrom.
- Punkt Befestigung Eckig 19 x 19 mm Chrom glänzend.

CR

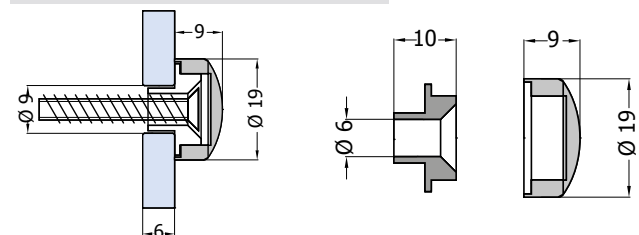


TA-022

e▶ 1.86

- Borchia fermavetro Ø 19 mm con coprivite cromo lucido.
- Point holder Ø 19 mm with cover screw polished chrome.
- Punkthalter Ø 19 mm mit Gewindeabdeckung Chrom glänzend.

CR

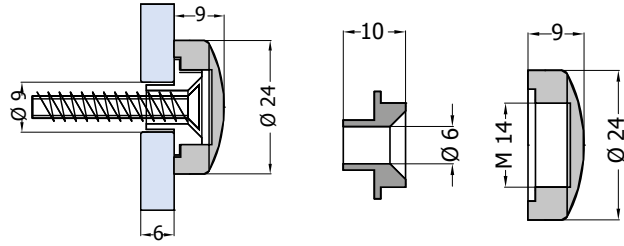




TA-023 e▶ 1.87

- Borchia fermavetro Ø 24 mm con coprivite cromo lucido.
- Point holder Ø 24 mm with cover screw polished chrome.
- Punkthalter Ø 24 mm mit Gewindeabdeckung Chrom glänzend.

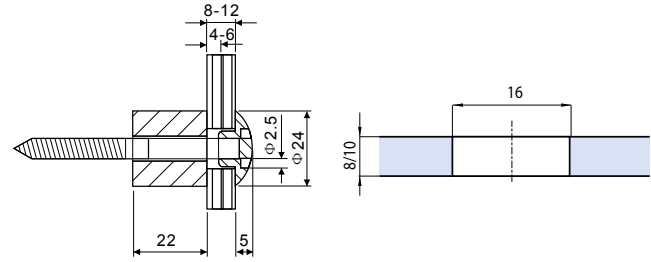
CR



LAM-8330A-4A e▶ 1.89

- Punto di fissaggio Ø 24 mm non regolabile.
- Single point fixing Ø 24 mm star domed not adjustable.
- Punkthalter Ø 24 mm.

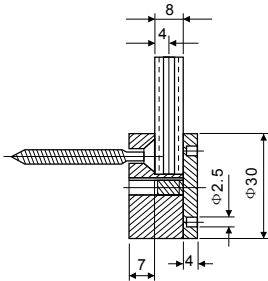
IX



LAM-8330A-5 e▶ 1.90

- Punto di fissaggio esterno vetro Ø 30 mm non regolabile.
- Single point fixing Ø 30 mm star flat - not adjustable.
- Punkthalter Ø 30 mm.

IX

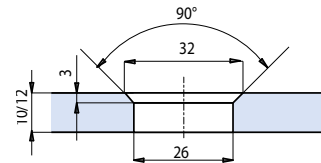
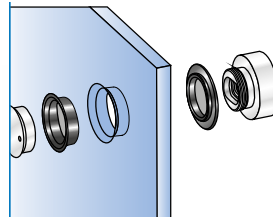


LAM-8300A-9A-DS

- Punto di fissaggio Ø 35 mm, svasato H 6 mm.
- Single point fixing Ø 35 mm countersunk not adjustable 6 mm.
- Punkthalter Ø 35 mm mit Senkkopf.

IX

e▶ 1.91

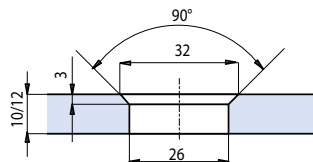
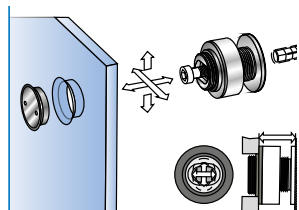


LAM-8300A-9C-DS

- Punto di fissaggio Ø 35 mm, svasato regolabile 10,5 mm - 12,5 mm.
- Adjustable single point fixing Ø 35 mm, countersunk - adjusted 10.5 mm, 12.5 mm.
- Punkthalter Ø 35 mm mit Senkkopf. Verstellbar 10,5 mm - 12,5 mm.

IX

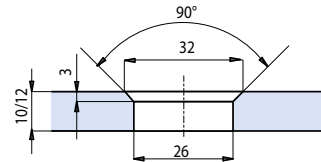
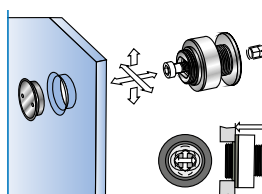
e▶ 1.92



LAM-8300A-9D-DS

- Punto di fissaggio Ø 35 mm, svasato regolabile 14 mm - 18 mm.
- Adjustable single point fixing Ø 35 mm, countersunk - adjusted 14 mm, 18 mm.
- Punkthalter Ø 35 mm mit Senkkopf. Verstellbar 14 mm - 18 mm.

e▶ 1.93

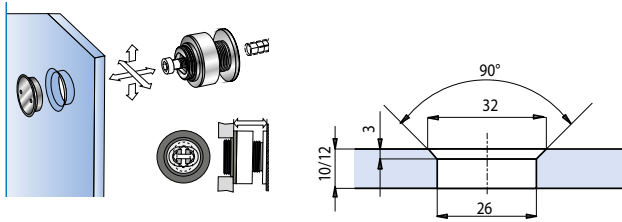




LAM-8300A-9G-DS

- Punto di fissaggio Ø 35 mm, svasato regolabile 22 mm - 26 mm.
- Adjustable single point fixing Ø 35 mm, countersunk - adjusted 22 mm, 26 mm.
- Punkthalter Ø 35 mm mit Senkkopf. Verstellbar 22 mm - 26 mm.

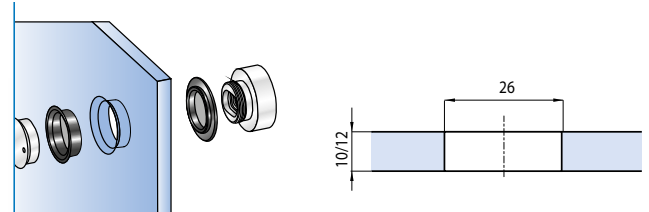
e▶ 1.94



LAM-8300A-9A

- Punto di fissaggio Ø 35 mm, H 6 mm.
- Single point fixing Ø 35 mm not adjustable 6 mm.
- Punkthalter Ø 35 mm.

e▶ 1.95

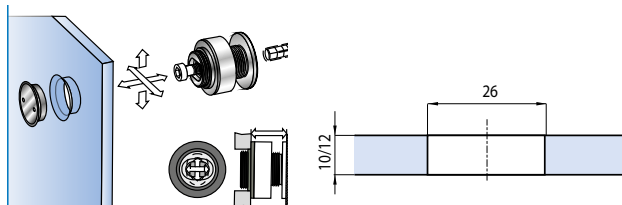


LAM-8300A-9C

e▶ 1.96

- Punto di fissaggio Ø 35 mm, regolabile 10,5 mm - 12,5 mm.
- Adjustable single point fixing Ø 35 mm adjusted 10.5 mm, 12.5 mm.
- Punkthalter Ø 35 mm. Verstellbar 10,5 mm - 12,5 mm.

IX

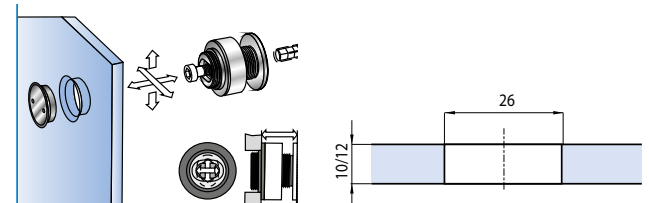


LAM-8300A-9E

e▶ 1.97

- Punto di fissaggio Ø 35 mm, regolabile 14 mm - 18 mm.
- Adjustable single point fixing Ø 35 mm adjusted 14 mm, 18 mm.
- Punkthalter Ø 35 mm. Verstellbar 14 mm - 18 mm.

IX

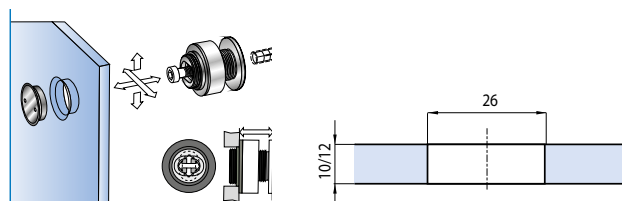


LAM-8300A-9G

e▶ 1.98

- Punto di fissaggio Ø 35 mm, regolabile 18 mm - 22 mm.
- Adjustable single point fixing Ø 35 mm adjusted 18 mm, 22 mm.
- Punkthalter Ø 35 mm. Verstellbar 18 mm - 22 mm.

IX



PG-CHIAVE

e▶ 1.84

- Chiave
- Tool
- Schlüssel

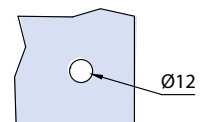


TA-024-CF

e▶ 1.88

- Punto di fissaggio per targa
- Point fitting for plates
- Punkthalterung - Schildbefestigung

CR



4 pcs