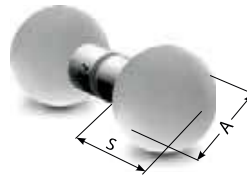
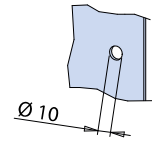
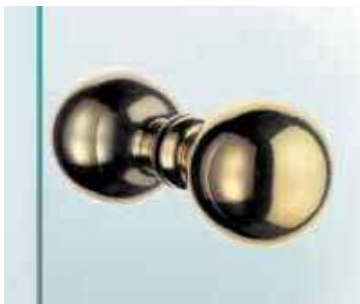



**V-019**

- Coppia pomoli in vetro.
  - Pair of door knobs in glass.
  - Paar Türknöpfe aus Glas.
- NS + GLASS



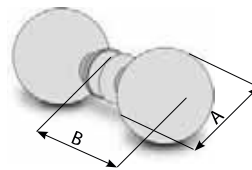
A = 40 / 45 / 50  
S = 52 / 57 / 62



**V-1056**

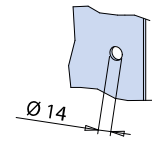
- Coppia pomoli palla Ø 60 mm.
- Pair of door knobs Ø 60 mm.
- Paar Türknöpfe Ø 60 mm.

**V-1056-2**

- Coppia pomoli palla Ø 50 mm.
  - Pair of door knobs Ø 50 mm.
  - Paar Türknöpfe Ø 50 mm.
- CS - NS - CR - OL - CP

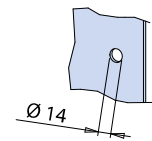
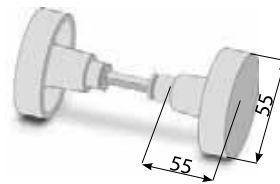


Ø 60 A = 60 / B = 78  
Ø 50 A = 50 / B = 70



**V-1105**

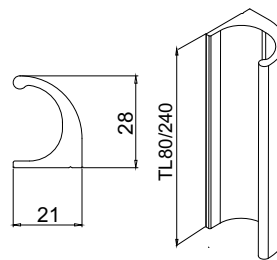
- Coppia pomoli piatti Ø 55 mm.
  - Pair of doorknobs Ø 55 mm.
  - Paar Türknöpfe Ø 55 mm.
- CS - NS - CR - OL - CP



**B-191-80 / B-191-240**

- Maniglia ad incollaggio biadesivo.
  - Small handle with self-adhesive fixing.
  - Kleine griffe selbstklebend.
- CR

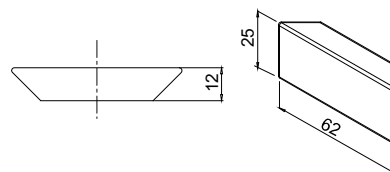
	B-191-80	B-191-240
TL 80	•	
TL 240		•



xme311


**B-193**

- Maniglia ad incollaggio biadesivo.
  - Small handle with self-adhesive fixing.
  - Kleine griffe selbstklebend.
- CR



xme311

**NS**  
Nickel satinato  
Satin nickel  
Ähnlich Edelstahl matt

**CR**  
Cromo lucido  
Polished chrome  
Chrom glänzend

**CS**  
Cromo satinato  
Satin chrome  
Chrom matt

**OL**  
Ottone lucido  
Polished brass  
Messing poliert

**CP**  
Cromo perla  
Chrome perla similar Alu  
Chrom perla ähnlich Alu

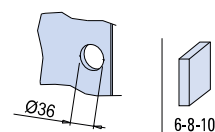
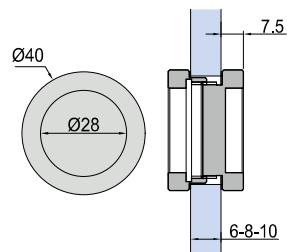


**V-526**

- Nicchia chiusa.
- Closed sliding-handle.
- Griffmuschel geschlossen.

AN - CR - NS - NO

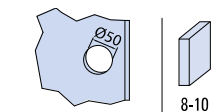
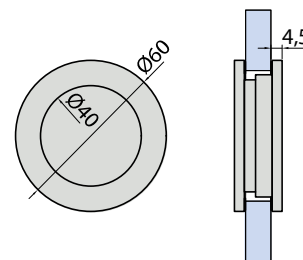
€ BX.363



**V-524**

- Paio nicchie per scorrevole tonda, Ø 60  
Materiale: ottone
  - Pair sliding door-handles, Ø 60  
Material: brass
  - Paar Griffmuscheln, Ø 60  
Material: Messing
- CP - NS - CR - NO

€ BX.364

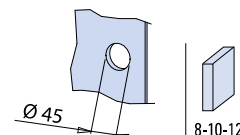
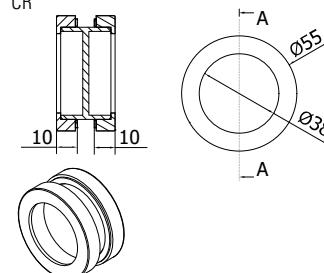


**B-170**

- Nicchia tonda Ø 55 mm per scorrevole.  
Foro nel vetro Ø 45 mm.  
Materiale: ottone
- Sliding door-handle round Ø 55 mm.  
Hole in glass Ø 45 mm.  
Material: brass
- Rund Griffmuschel Ø 55 mm.  
Glas Bohrung Ø 45 mm.  
Material: Messing

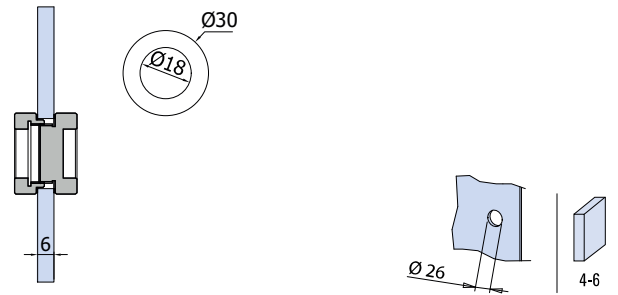
CR

€ BX.365

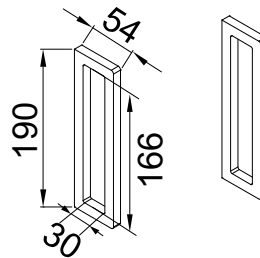



**V-528**

- Nicchia chiusa.
  - Closed sliding-handle.
  - Griffmuschel geschlossen.
- AN - CR - NS


**DIV-008**

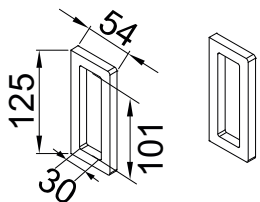
- Paio nicchie scorrevole ad incollaggio
  - Pair sliding door-handles with self-adhesive fixing
  - Paar Griffmuscheln selbstklebend
- AN - NS - NO - BI - BC - BS - CR



xme595m


**DIV-007**

- Paio nicchie scorrevole ad incollaggio
  - Pair sliding door-handles with self-adhesive fixing
  - Paar Griffmuscheln selbstklebend
- AN - NS - NO - BI - BC - BS - CR



xme595m

**NS**  
Nickel satinato  
Satin nickel  
Ähnlich Edelstahl matt

**CR**  
Cromo lucido  
Polished chrome  
Chrom glänzend

**CS**  
Cromo satinato  
Satin chrome  
Chrom matt

**OL**  
Ottone lucido  
Polished brass  
Messing poliert

**CP**  
Cromo perla  
Chrome perla similar Alu  
Chrom perla ähnlich Alu

**AN**  
Alluminio anodizzato  
Aluminium anodized  
Aluminium Silberfarbig

**NO**  
Nero opaco  
Matt black  
Schwarz matt