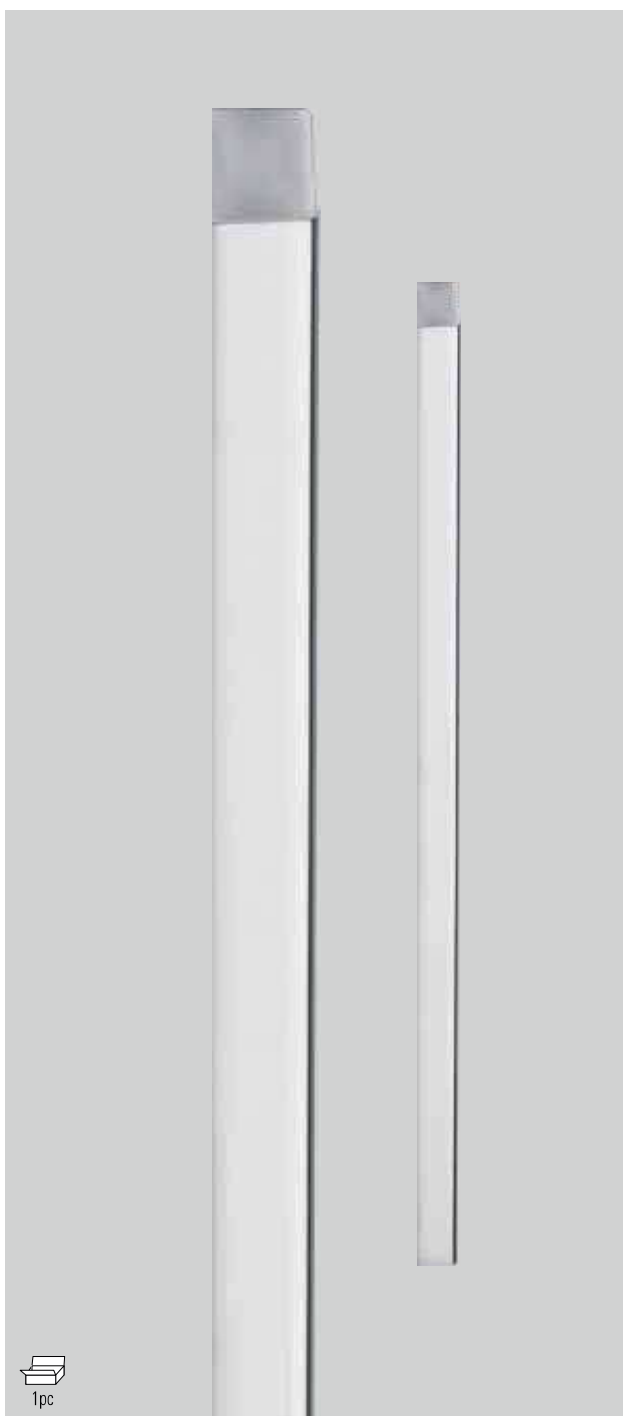


## MANIGLIONI AD INCOLLAGGIO PULLHANDLES WITH SELF-ADHESIVE / STOSSGRIFFE SELBSTKLEBEND

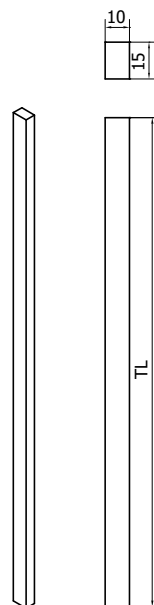


1pc

### SQUARE 10-INC

€ BX.370

☑	Code	TL	Materiale Material Material	Unit.	Finitura Finishes Oberfläche
	10.41.81/300	300	Alluminio Aluminium Aluminium	Singolo Piece Stück	AN
	10.41.51/300	300	Ottone Brass Messing	Singolo Piece Stück	CR
	10.41.61/300	300	Alluminio Aluminium Aluminium	Singolo Piece Stück	AL
	10.41.71/300	300	Alluminio Aluminium Aluminium	Singolo Piece Stück	NO
	10.41.81/500	500	Alluminio Aluminium Aluminium	Singolo Piece Stück	AN
	10.41.51/500	500	Ottone Brass Messing	Singolo Piece Stück	CR
	10.41.61/500	500	Alluminio Aluminium Aluminium	Singolo Piece Stück	AL
	10.41.71/500	500	Alluminio Aluminium Aluminium	Singolo Piece Stück	NO



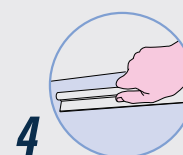
- 1**
- Pulire con solvente
  - Clean with solvent
  - Mit Lösungsmittel reinigen



- 2**
- Asciugare con un panno
  - Dry with a cloth
  - Mit einem Tuch trocknen

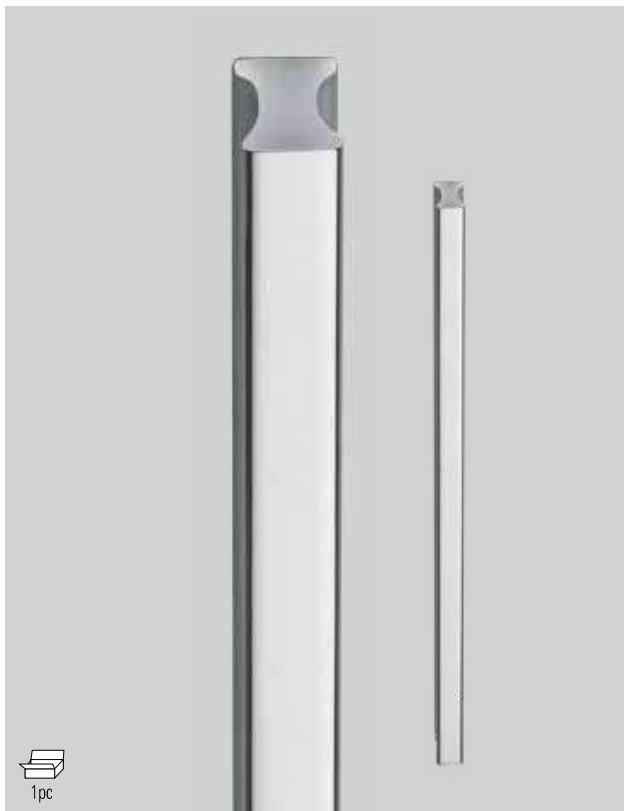


- 3**
- Staccare la pellicola protettiva e applicare
  - Remove the protective film and apply
  - Die Schutzfolie abziehen und anbringen



- 4**
- Premere con forza
  - Press firmly
  - Fest drücken





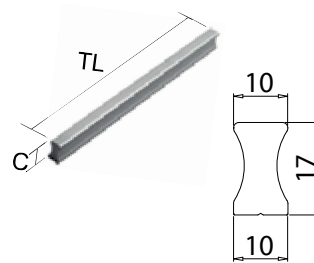
1pc

**POR-0408 V**

- Maniglione singolo con biadesivo
- Pc pullhandle with self-adhesive fixing
- Stück Stossgriff selbstklebend

AN - IXO - NS - NO - BI - AL - CR

TL	C	Unit.	Finitura Finishes Oberfläche
260	17	Singolo Piece Stück	AL - AN - CR - IXO
410	17	Singolo Piece Stück	AL - AN - CR - IXO
560	17	Singolo Piece Stück	AL - AN - CR - IXO

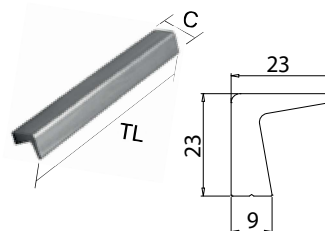


1pc

**POR-0400 V**

- Maniglione singolo con biadesivo
- Pc pullhandle with self-adhesive fixing
- Stück Stossgriff selbstklebend

TL	C	Unit.	Finitura Finishes Oberfläche
240	23	Singolo Piece Stück	AL - AN - CR - NS
390	23	Singolo Piece Stück	AL - AN - CR - NS
540	23	Singolo Piece Stück	AL - AN - CR - NS


**AL**  
 Alluminio lucido  
 Polished aluminium  
 Aluminium glänzend

**NS**  
 Nickel satinato  
 Satin nickel  
 Ähnlich Edelstahl matt

**CR**  
 Cromo lucido  
 Polished chrome  
 Chrom glänzend

**AN**  
 Alluminio anodizzato  
 Aluminium anodized  
 Aluminium Silberfarbig

**IXO**  
 Effetto inox satinato  
 Inox effect  
 Inox effekt

**NO**  
 Nero opaco  
 Matt black  
 Schwarz matt

**BI**  
 Bianco opaco  
 Matt white  
 Weiss matt