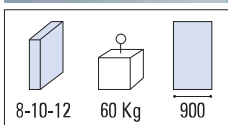


# CERNIERE VERTICALI

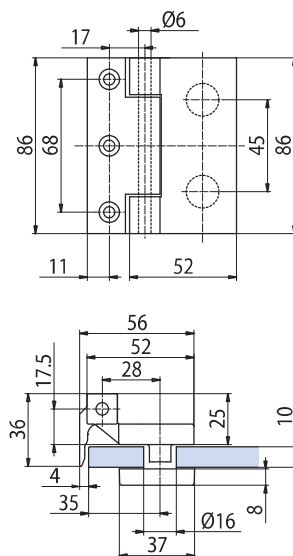
## SIDE HINGES / 3-TEILIGE BÄNDER



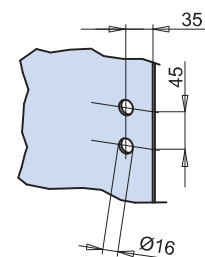
### V-709 LIBRA

- Cerniera verticale con aletta fissaggio.
- Side Hinge with fixing plate.
- Band mit Anschraubplatte.

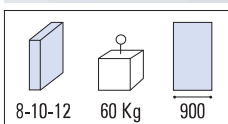
AN - CS - NS - CR - CP - NO



€ E.355



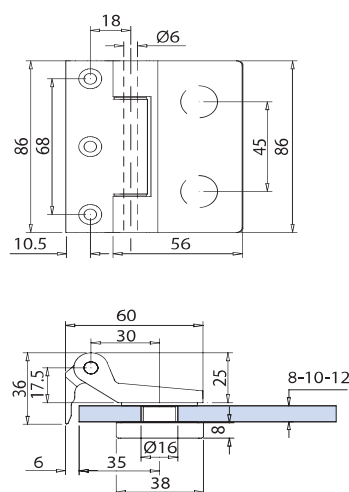
xla217



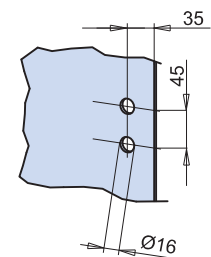
### V-809

- Cerniera verticale con aletta fissaggio.
- Side Hinge with fixing plate.
- Band mit Anschraubplatte.

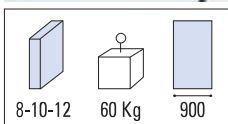
AN - NS - CR - CP



€ E.357



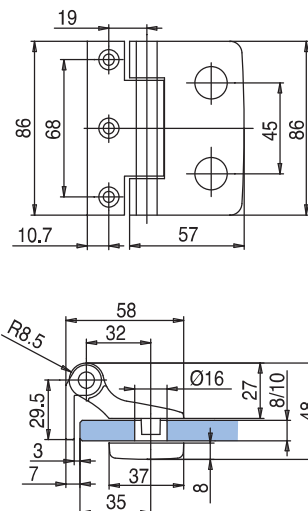
xme348



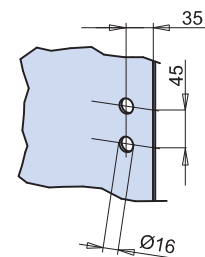
### V-509 SLIM

- Cerniera con aletta fissaggio.
- Side hinge with fixing plate.
- Band mit Anschraubplatte.

AN - CS - NS - CR - CP - OL



€ E.356



xla46

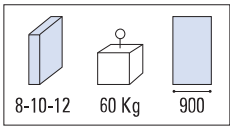
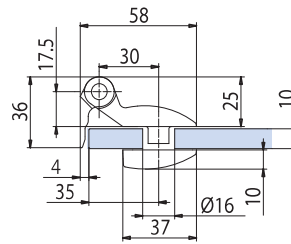
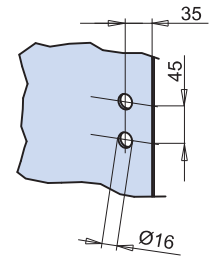
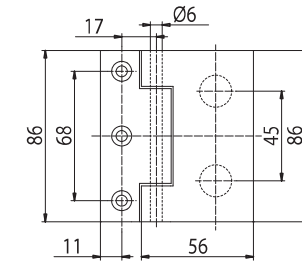


### V-409 STILO

- Cerniera vertical con aletta fissaggio universale.
- Side Hinge with fixing plate.
- Band mit Anschraubplatte.

CS - NS - CR - CP

€▶ E.367



xla217



### V-909

- Cerniera verticale con aletta fissaggio.
- Side Hinge with fixing plate.
- Band mit Anschraubplatte.

AN - IXE - NO

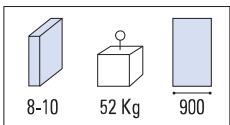
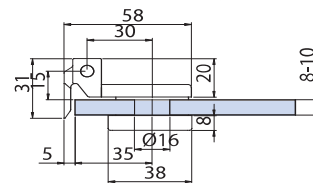
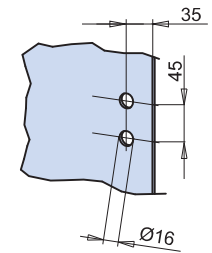
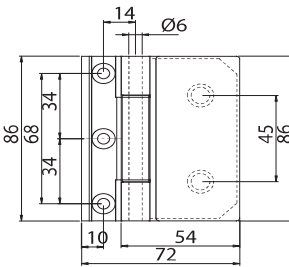
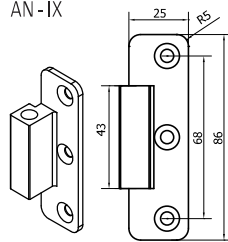
€▶ E.362

### V-909-A

- Aletta optional per cerniera V-909 per incasso nello stipite
- Optional fixing plate for hinge V-909, installed flush with door jamb
- Optional Befestigungsplatte für Band V-909, bündige Montage in der Zarge

AN - IX

€▶ E.363



xme554

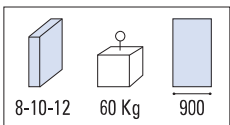
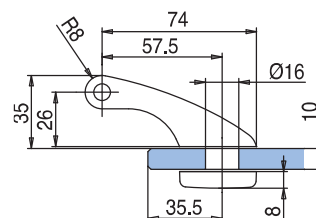
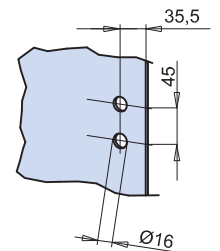
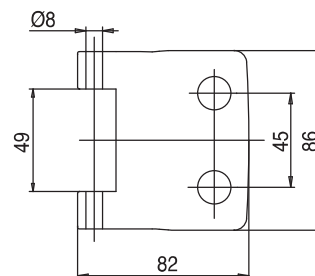


### V-402

- Cerniera verticale tipo tedesco.
- Side Hinge german type.
- 3-teiliges Band einschl. Hülse für Rahmenteil DIN-NORM.

AN - IXE - CS - CR - CP - OL - NO

€▶ E.358



xla34

# CERNIERE VERTICALI

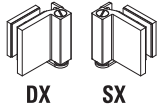
## SIDE HINGES / 3-TEILIGE BÄNDER



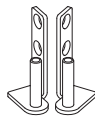
### V-704 DX / V-704 SX

- Cerniera alto/basso regolabile in altezza, fissaggio laterale.
- Top/bottom hinge with height adjustment, side installation.
- Oberes/unteres Band Höhenverstellbar, seitliche Befestigung.

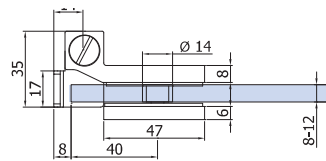
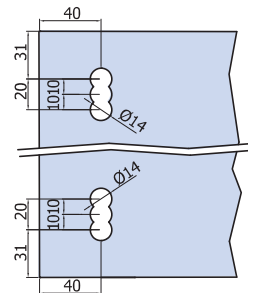
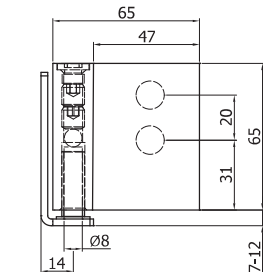
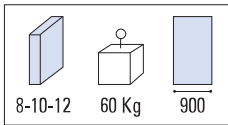
AN - CS - NS - CR - CP - NO



**DX**    **SX**



- V-703**
- incluso
  - included
  - enthalten



€ ▶ E.360

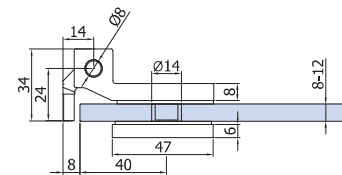
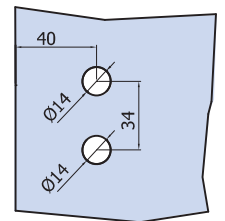
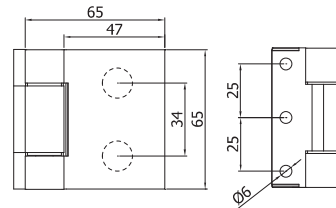
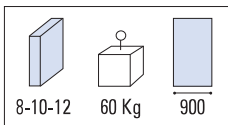
xme511



### V-701

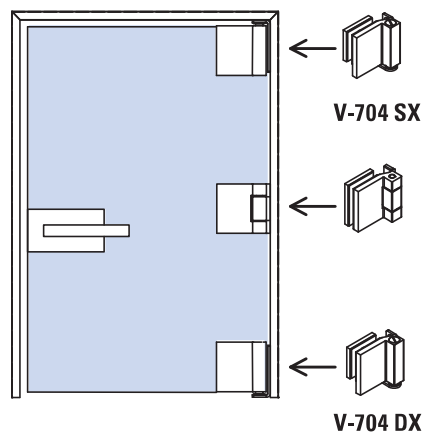
- Cerniera verticale con alette di fissaggio.
- Side hinge with fixing plate.
- Band mit Anschraubplatte.

AN - CS - NS - CR - CP - NO



€ ▶ E.359

xme511



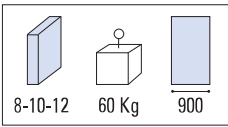
### V-701

- Optional per altezze superiori a 2500 mm
- Optional for height door panel more than 2500 mm
- Optional für Tür höher als 2500 mm

€ ▶ E.359

# CERNIERE ORIZZONTALI

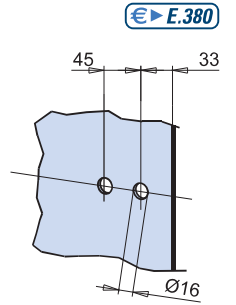
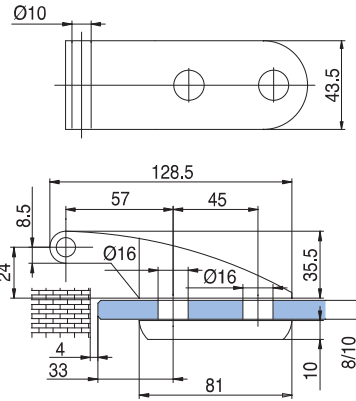
## HORIZONTAL HINGES / 2-TEILIGE BÄNDER



### V-201

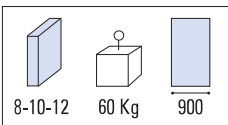
- Cerniera Tonda tipo tedesco.
- Side hinge Tonda German type.
- 2-teiliges Band Tonda einschl. Hülse.

AN - IXE - CS - CR - CP - OL



€ ▶ E.380

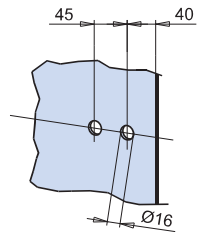
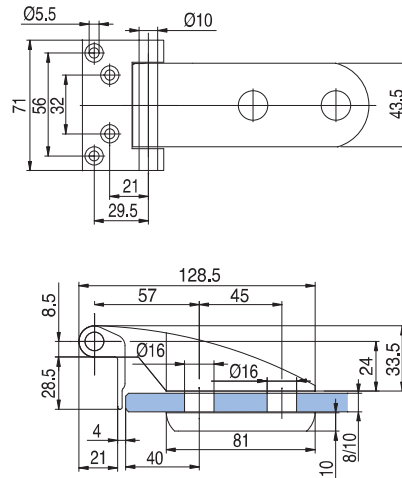
xme012



### V-202

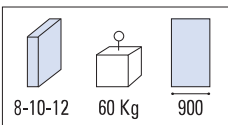
- Cerniera Tonda con aletta fissaggio per stipiti 28 mm.
- Round side hinge with fixing plate for rebates of 28 mm.
- Band Tonda mit Anschraubplatte für Falztiefe 28 mm.

AN - IXE - CS - CR - CP - OL



€ ▶ E.381

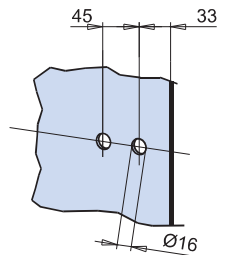
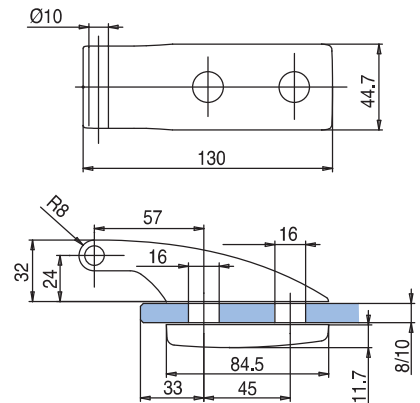
xme012



### V-401 FERRARI

- Cerniera tipo tedesco.
- Side hinge german type.
- 2-teiliges Band einschl. Hülse.

AN - CS - IXE - CR - CP - OL



€ ▶ E.382

xla34



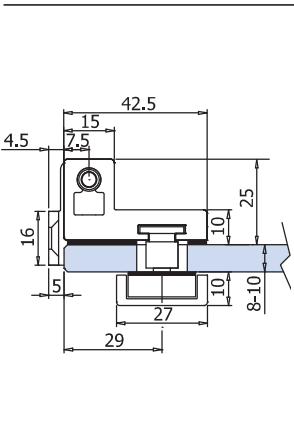
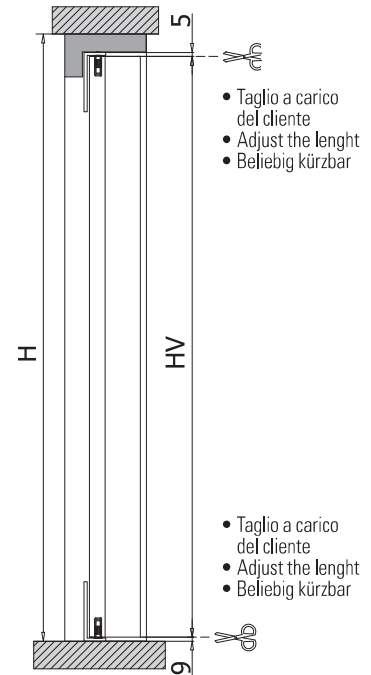
**P-09**

€ E.379

- Cerniera tutt'altezza per applicazione su stipiti battuta da 40 mm. Altezza standard cerniera 2400 mm.
- Hinge profile, for frames with rebate depth 40 mm. Hinge standard height 2400 mm.
- Bandprofil für Falztiefe 40 mm. Band standard Höhe 2400 mm.

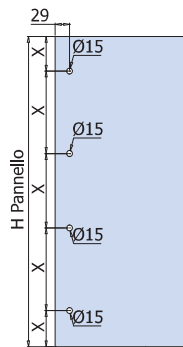
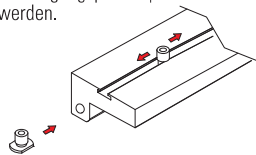
AN

L=2400 mm

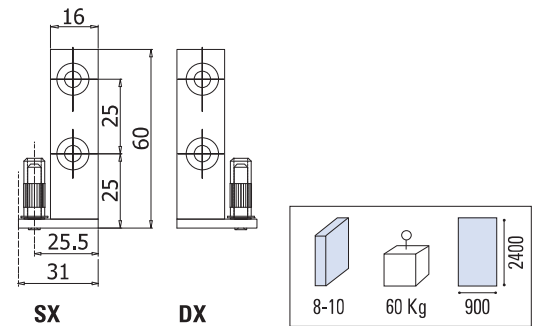


LAVORAZIONE VETRO  
GLASS PREPARATION  
GLASBEARBEITUNG

- I fori sul vetro possono essere posizionati a piacimento grazie alle bussole regolabili.
- The holes can be positioned at will thanks to the adjustable fixing points.
- Die Bohrungen können nach belieben durch die verstellbaren Befestigungspunkte positioniert werden.

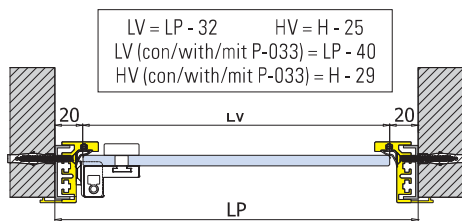
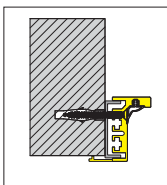


**V-122-SD** (incluso / included / enthalten)



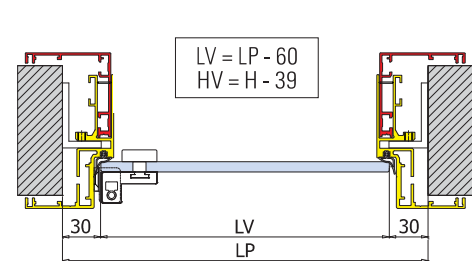
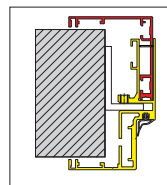
Cerniera applicabile ai seguenti stipiti / Hinge available for following frames / Band an folgende Zargen montierbar

**P-030 / P-040**



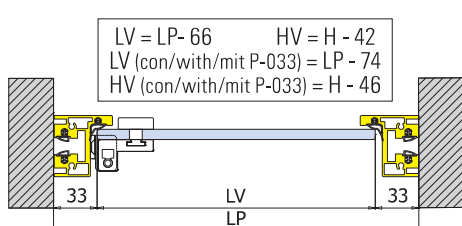
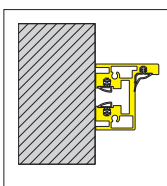
LV = LP - 32    HV = H - 25  
LV (con/with/mit P-033) = LP - 40  
HV (con/with/mit P-033) = H - 29

**TP-250**



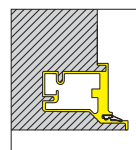
LV = LP - 60  
HV = H - 39

**TP-100**

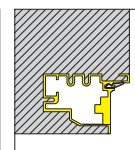


LV = LP - 66    HV = H - 42  
LV (con/with/mit P-033) = LP - 74  
HV (con/with/mit P-033) = H - 46

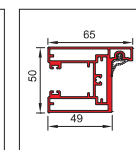
**P-070**



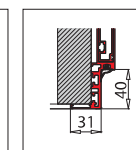
**P-060**



**TP-201**



**TP-300**



xme199c2 / xme199i

**LP**  
Passaggio luce  
Clear opening width  
Lichte Durchgangsbreite

**LV**  
Larghezza vetro  
Glass width  
Glasbreite

**HV**  
Altezza vetro  
Glass height  
Glashöhe

**H**  
Altezza passaggio luce  
Clear opening height  
Lichte durchgangshöhe