

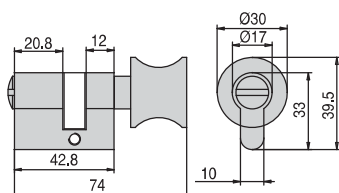
# CILINDRI

## CYLINDERS / ZYLINDER



**C-01** **E.311**

- Cilindro WC con pomolo per lato serratura.
  - WC cylinder with knob for lock side.
  - WC Zylinder mit Knopf auf Schlossseite.
- CS - NS - CR - OL

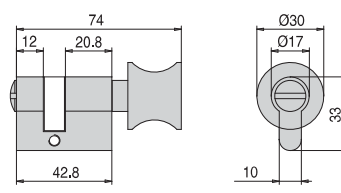


xla53



**C-02** **E.312**

- Cilindro WC con pomolo per lato battuta.
  - WC cylinder with knob for rebate side.
  - WC Zylinder mit Knopf auf Schlossgegensseite.
- CS - NS - CR - OL

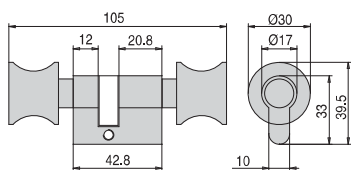


xla53



**C-03** **E.313**

- Cilindro con doppio pomolo.
  - Cylinder with double knob.
  - Zylinder mit Doppelknopf.
- CS - NS - CR - OL

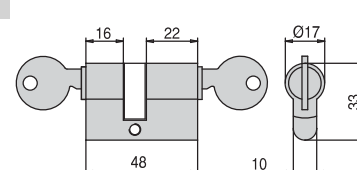


xla53



**C-04** **E.314**

- Cilindro asimmetrico da 48 mm.
  - Cylinder asymmetrical with length 48 mm.
  - Zylinder unsymmetrisch mit Länge 48mm.
- CS

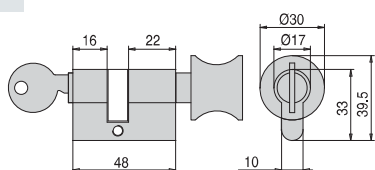


xla53



**C-05** **E.315**

- Cilindro con pomolo e chiave.
  - Cylinder with knob and key.
  - Zylinder mit Knopf und Schlüssel.
- CS - NS - CR

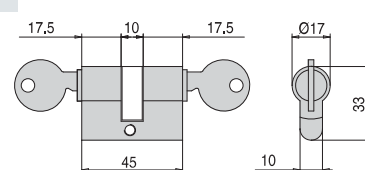


xla53



**C-06** **E.316**

- Cilindro simmetrico da 45 mm.
  - Cylinder symmetrical length 45 mm.
  - Zylinder symmetrisch mit Länge 45mm.
- CR

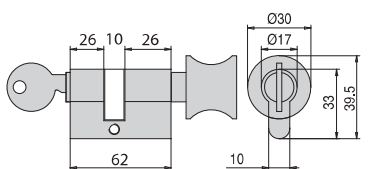


xla53



**C-08** **E.318**

- Cilindro con pomolo e chiave mm 62.
  - Cylinder with knob and key length 62 mm.
  - Zylinder mit Knopf und Schlüssel Länge 62 mm.
- CS - NS - CR - OL - CP

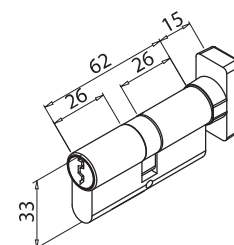


xla53



**C-08-Q** **E.319**

- Cilindro chiave/pomolo
  - Cylinder knob/key
  - Zylinder Knopf/Schlüssel
- CS - NS - CR - CP

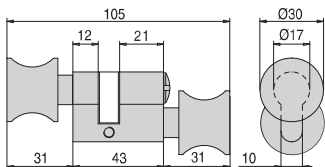


xla53



**C-07** €▶ E.317

- Cilindro WC asimmetrico con 1 pomolo per chiusura porta ed 1 fisso per tirare anta.
- WC cylinder asymmetrical with double knob (1 with closing function, 1 fixed).
- WC-Zylinder unsymmetrisch mit Doppelknopf einmal mit Schließfunktion, CS - NS - CR - OL

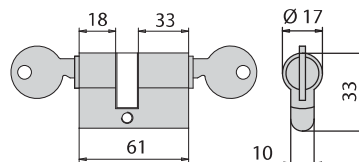


xla53



**C-09** €▶ E.320

- Cilindro asimmetrico 61 mm.
- Cylinder asymmetrical with length 61 mm.
- Zylinder unsymmetrisch mit Länge 61 mm. CR

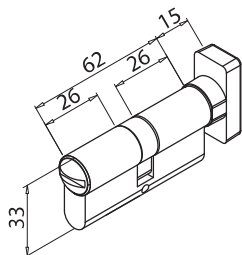


xla53



**C-013** €▶ E.321

- Cilindro WC con pomolo.
- WC cylinder with knob.
- WC Zylinder mit Knopf. CS - NS - CP - CR

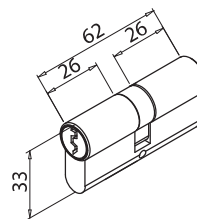


fb049-a-gr



**C-014** €▶ E.322

- Cilindro simmetrico
- Cylinder symmetrical
- Zylinder symmetrisch CR

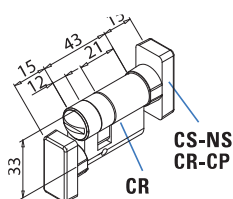


fb049-a-gr



**C-016** €▶ E.323

- Cilindro W.C. asimmetrico, 1 pomolo chiusura porta, 1 pomolo fisso per tirare anta
- W.C. cylinder asymmetrical with double knob, 1 with closing function - 1 fixed
- WC Zylinder unsymmetrisch mit Doppelknopf (1 mit Schließfunktion, 1 ohne funktion) CS - NS - CR - CP

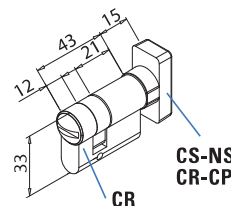


fb049-a-gr



**C-018** €▶ E.324

- Cilindro WC con pomolo per lato battuta.
- WC cylinder with knob for rebate side.
- WC Zylinder mit Knopf auf Schlossgegensseite. CS - NS - CR - CP

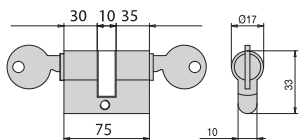


fb049-a-gr



**C-023** €▶ E.325

- Cilindro chiave-chiave per serratura V-765 PZ
- Cylinder for lock V-765 PZ
- Zylinder für Schloss V-765 PZ CR

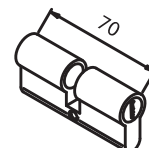


c-dualglass



**C-024** €▶ E.326

- Cilindro simmetrico da 70 mm per serrature forti spessori V-745-13,5 / 17,5 / 21,5.
- Cylinder symmetrical length 70 mm for locks V-745-13,5 / 17,5 / 21,5.
- Zylinder symmetrisch mit Länge 70 mm für Schlösser V-745-13,5 / 17,5 / 21,5. CR

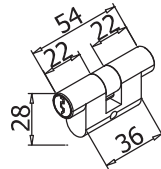


xme490

CERNIERE



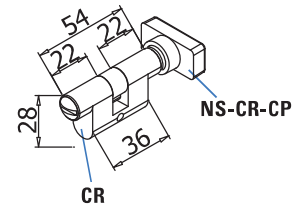
- C-010** € E.327
- Cilindro ovale simmetrico per serrature V-564 / V-565 / V-574 / V-575
  - Oval symmetrical cylinder for locks V-564 / V-565 / V-574 / V-575
  - Ovaler Zylinder symmetrisch für Schlösser V-564 / V-565 / V-574 / V-575
- CR



xme445



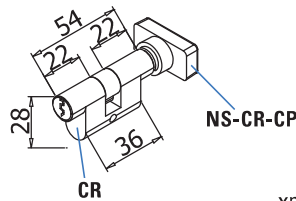
- C-011** € E.328
- Cilindro W.C. ovale per serrature V-564 / V-565 / V-574 / V-575
  - Oval W.C. cylinder for locks V-564 / V-565 / V-574 / V-575
  - Ovaler WC Zylinder für Schlösser V-564 / V-565 / V-574 / V-575
- CP - NS - CR



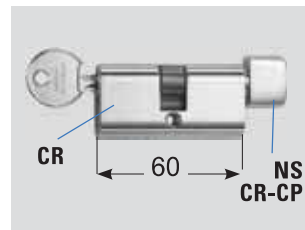
xme445



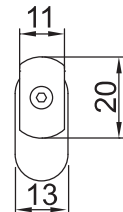
- C-012** € E.329
- Cilindro ovale chiave / pomolo per serrature V-564 / V-565 / V-574 / V-575
  - Oval cylinder knob / key for locks V-564 / V-565 / V-574 / V-575
  - Ovaler Zylinder Knopf / Schlüssel für Schlösser V-564 / V-565 / V-574 / V-575
- CP - NS - CR



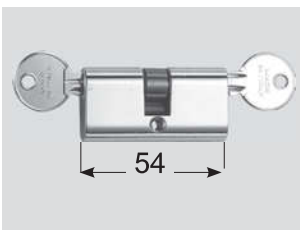
xme445



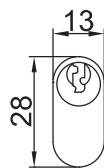
- C-019** € E.330
- Cilindro ovale chiave / pomolo per serrature V-900 / V-780 / V-584 / V-585 / V-594
  - Oval cylinder key / knob for locks V-900 / V-780 / V-584 / V-585 / V-594
  - Ovaler Zylinder mit Knopf und Schlüssel für Schlösser V-900 / V-780 / V-584 / V-585 / V-594
- CP - NS - CR



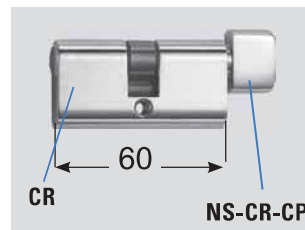
xla53



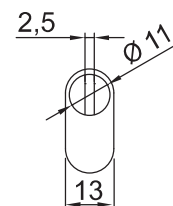
- C-020** € E.331
- Cilindro ovale chiave/chiave per serrature V-900 / V-780 / V-584 / V-585 / V-594
  - Oval cylinder key/key for locks V-900 / V-780 / V-584 / V-585 / V-594
  - Ovaler Zylinder für Schlösser V-900 / V-780 / V-584 / V-585 / V-594
- CR



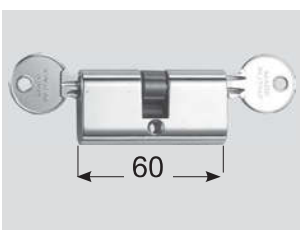
cilindri



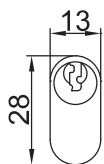
- C-021** € E.332
- Cilindro ovale W.C. con pomolo per serrature V-900 / V-780 / V-584 / V-585 / V-594
  - Oval W.C. cylinder with knob for locks V-900 / V-780 / V-584 / V-585 / V-594
  - Ovaler WC Zylinder mit Knopf für Schlösser V-900 / V-780 / V-584 / V-585 / V-594
- CP - NS - CR



cilindri



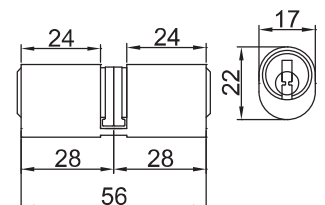
- C-025** € E.333
- Cilindro ovale chiave/chiave per I-lock V-900 AN / V-900 IX
  - Oval cylinder key/key for I-lock V-900 AN / V-900 IX
  - Ovaler Zylinder für I-lock V-900 AN / V-900 IX
- CR



cilindri



- C-022** € E.334
- Cilindro per MV-900 PZ
  - Cylinder for MV-900 PZ
  - Zylinder für MV-900 PZ



cilindri