

# ELEGANT LEVER FS



**V-745-13,5 PZ**  
**V-745-17,5 PZ**  
**V-745-21,5 PZ**

€ G.13

- Serrature Elegant con chiavistello tondo, per vetri con spessori 13,5 - 17,5 - 21,5. Impugnatura Leva incorporata.
- Locks Elegant with rounded dead bolt, for glass thickness 13,5 - 17,5 - 21,5. Lever handle incorporated.
- Cylinders and strike plates not included, to order separately.
- Elegant Mittelschloss mit Bolzen, für Glasdicke 13,5 - 17,5 - 21,5. Griff angebaut.
- Zylinder und Schließbleche nicht enthalten, separat zu bestellen.



€ G.14

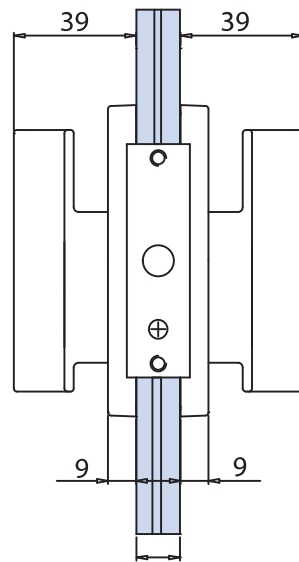
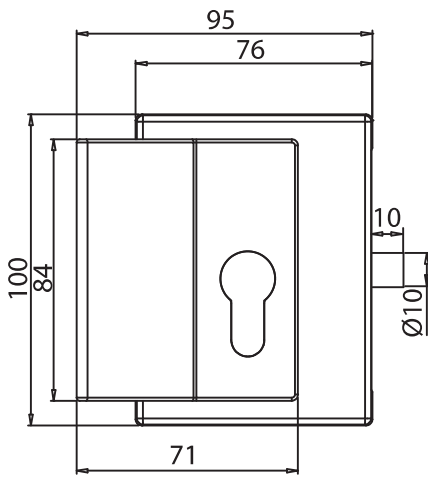
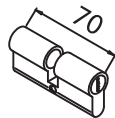
**V-745-13,5 2FLG**  
**V-745-17,5 2FLG**  
**V-745-21,5 2FLG**

- Controserrature
- Strike boxes
- Gegenkästen

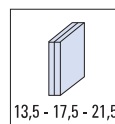
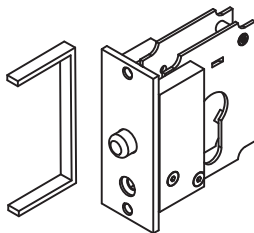
**C-024**

€ G.16

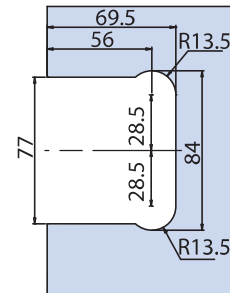
- Cilindro simmetrico da 70 mm.
- Cylinder symmetrical length 70 mm.
- Zylinder symmetrisch mit Länge 70 mm.



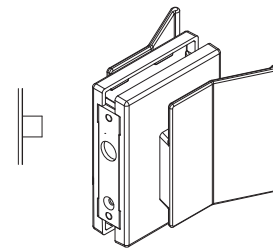
**V-745-13,5 vetro/glass 13,5 mm**  
**V-745-17,5 vetro/glass 17,5 mm**  
**V-745-21,5 vetro/glass 21,5 mm**



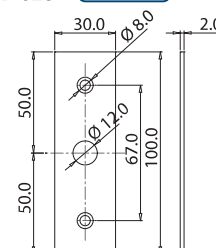
LAVORAZIONE VETRO  
GLASS PREPARATION  
GLASBEARBEITUNG



**V-745-13,5 2FLG**  
**V-745-17,5 2FLG**  
**V-745-21,5 2FLG**



**V-023** € G.15



xme 490a

# ELEGANT FS



**V-725-13,5 PZ**  
**V-725-17,5 PZ**  
**V-725-21,5 PZ**

€▶ G.17

- Serrature Elegant con chiavistello tondo, per vetri con spessori 13,5 - 17,5 - 21,5. Cilindri e contropiastre da ordinare a parte.
- Locks Elegant with rounded dead bolt, for glass thickness 13,5 - 17,5 - 21,5. Cylinders and strike plates not included, to order separately.
- Elegant Mittelschloss mit Bolzen, für Glasdicke 13,5 - 17,5 - 21,5. Zylinder und Schließbleche nicht enthalten, separat zu bestellen.



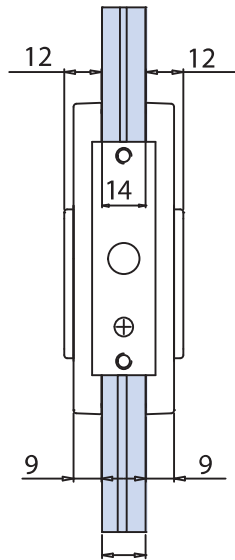
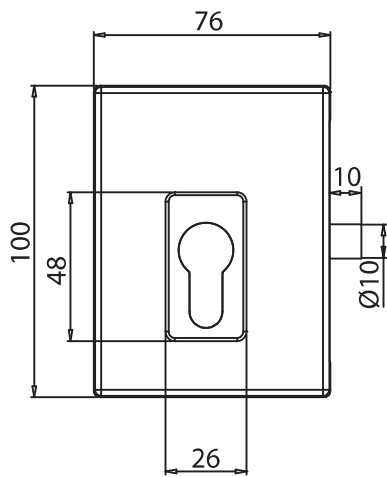
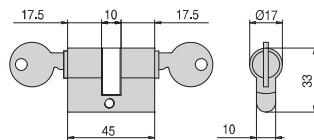
**V-725-13,5 2FLG**  
**V-725-17,5 2FLG**  
**V-725-21,5 2FLG**

- Controserrature
- Strike boxes
- Gegenkästen

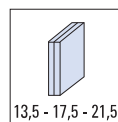
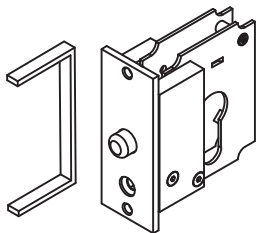
€▶ G.18

**C-06** €▶ G.20

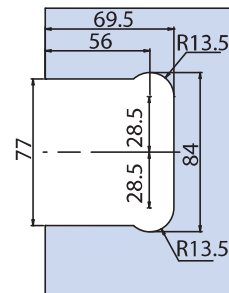
- Cilindro simmetrico da 45 mm.
- Cylinder symmetrical length 45 mm.
- Zylinder symmetrisch mit Länge 45 mm.



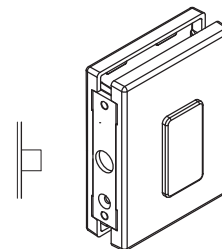
**V-745-13,5 vetro/glass 13,5 mm**  
**V-745-17,5 vetro/glass 17,5 mm**  
**V-745-21,5 vetro/glass 21,5 mm**



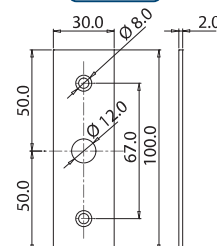
LAVORAZIONE VETRO  
 GLASS PREPARATION  
 GLASBEARBEITUNG



**V-725-13,5 2FLG**  
**V-725-17,5 2FLG**  
**V-725-21,5 2FLG**



**V-023** €▶ G.19



xme 490a

**NS**  
 Nickel satinato  
 Satin nickel  
 Ähnlich Edelstahl matt